



Visit Saarijärvi

Get carried away in the moment.



SAARIJÄRVI REGION
TOURISM GUIDE 2022

Welcome to participate, experience and feel!

Saarijärvi offers excellent opportunities for all of this. We want to help you find your own subjects of interest in our city with this brochure.

Find your own summer event. Kirmot (the traditional music festival) offers a diverse selection of different performers. At the Kukonhiekka dance platform, you can experience the charm of dance; Runeberg Park's summer concerts and culture Wednesdays provide diverse programmes for visitors of all ages. The villages offer unique events that you cannot find elsewhere. Have a look and find your own!

Saarijärvi museum, together with its sculpture parks, provide things to see and experience. Artist atelier Leijonantorni is a unique experience as an attraction. The best choice for families with children is the Veijari Activity Park, which offers activities and lots to see for the entire family.

Nature speaks to us, calms us down, and excites us. You can set out on a path together or alone. The popularity of our nature destinations keeps growing. The Pyhä-Häkki national park, the Julmat Lammit ponds, the Haikankärki point, and the Kulhanvuori hill are now all-year camping destinations. The summer season is the busiest, but it is worth going on a nature excursion in the winter too. We lay down many ski trails all over our parish, and you can pick up more speed at the Paavonrinteet downhill slope. After a skiing excursion or downhill skiing, you can head over to the Swimming Hall - Fitness Centre Aarresaari to relax and enjoy the bubbles.

During your stay, remember to familiarise yourself with Saarijärvi's diverse selection of shops and services. Make our services yours - we want to put effort into them to offer visitors the best and most pleasurable experience!

Many of us have fallen in love in – and with – Saarijärvi. Take the opportunity to fall in love too!

Satu Autiosalo
Mayor





CULTURE

Museum
Stone-Age
Village
Exhibitions
Destinations

PAGES 6-17



ACCOMMODATION



Hotels
Country Houses
Cottages
Camping

PAGES 36-40



THING TO DO



Activities
Sport Facilities
Equipment
Rental

PAGES 22-35



DINING



Restaurants
Cafes

PAGES 42-45



SHOPPING & SERVICES

Shopping
Gas Stations
Night Life
Tourist Information
Services Catalogue

PAGES 46-53



NATURE DESTINATIONS

National Park
Hiking / Camping
Nature Trails
Canoeing and
Rapid Trails

PAGES 18-21



MAPS & INFO

Downtown
Tarvaala
Town Map
Nature Dest.

PAGES 54-65

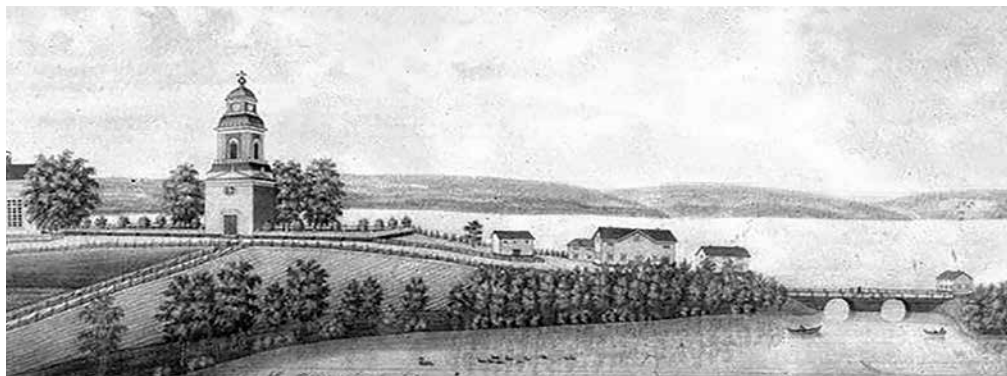




SAARIJÄRVI - from a bark bread parish to a lively city

Saarijärvi is among the oldest settlements in Finland – a settlement over 10,000 years old has been discovered in Selänpäänjoki of Pylkönmäki. Slightly more recent settlements have been found in Eerola of Kalmari and at the northern end of lake Summasjärvi. A unique hunting pit trap system has been discovered in the region, which indicates a highly organised community.

This community spirit has lasted throughout the millennia, as the folk of Saarijärvi are a close-knit and warm community even today.



Our national poet Johan Ludvig Runeberg lived in Saarijärvi during the years 1823-1825. Here the young poet encountered a new and fascinating environment, which experience was later distilled into fine poetry. **Farmer Paavo** was Runeberg's first significant poem about a Finnish-speaking man of the people. It was published in Runeberg's first collection in 1830.



Farmer Paavo even has his own monument in Saarijärvi; the bronze Paavo statue by **Heikki Varja** was christened in 1961 in the church park.

Some of the nature that was around in Runeberg's time has remained in an almost untouched state in the present-day Julmat Lammit nature conservation area. Runeberg was an avid hunter who would roam these majestic pond landscapes in search of game, which hunting trips have been described in his Saarijärvi article. The area can be explored by hiking along the Runeberg trail.



Read the poem Farmer Paavo via the QR code!

1866 The Municipality of Saarijärvi was established.

1866

1867

Tarvaala Agricultural Education School was established.

1986

Saarijärvi became a town.

2016

Saarijärvi celebrated its 150 years as a municipality, 30 years as a town anniversary.



Saarijärvi



Present-day Saarijärvi is a beautiful, appealing, and healthy environment in which to grow – it is a city full of entrepreneurs, expertise, and culture in northern Central Finland.

One of our best parts is the wonderful down town area, which has been constructed on an islet in the middle of three lakes: the Saarijärvi, Lumperoinen, and Herajärvi lakes. Here, you can live by a lake and in the middle of a city at the same time!

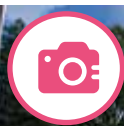
In addition to wonderful landscapes, Saarijärvi offers its inhabitants, summer guests, and other visitors a wealth of culture services and recreational opportunities.

Our most interest culture destinations include the **Stone-Age Village**, showcasing the oldest settlement in Finland, the **Gentry Home Museum** which housed Runeberg during his visit, the Tapper family residence **Juhola**, and the **Saarijärvi museum**.

There are several interesting natural historic hiking and skiing destinations in Saarijärvi: the **Pyhä-Häkki national park**, the **Kulha nature conservation area**, and the **Julmat Lammit ponds**.

You are welcome to enjoy the beautiful nature, waterways, and culture of the Saarijärvi culture parish – in the heart of Finland!





THE SAARIJÄRVI MUSEUM

The renewed Saarijärvi museum is full of culture and artistic experiences.

The museum arranges exhibitions and documents, records, and studies local lore for future generations! The museum enterprise started in the 1950s by the Saarijärvi Society established the foundation for the professional Saarijärvi City Museum, which was founded in 1986. Locals and travellers have been able to enjoy changing exhibits in the museum main building, opened three years later, for more than three decades! The main building was renovated and expanded in 2019.

EXHIBIT SCHEDULE FOR 2022

Glow and warmth of tapestries 16/2 - 22/5/2022

Replicates of Central Finnish traditional tapestries and artistic tapestries from private collections glow in the museum's exhibition. Collector Tuomas Sopenen exhibits dozens of tapestries from his extensive collection. In addition, tapestries, furniture, and other artefacts selected from the museum's collections represent national aesthetics. In connection with the exhibition, Saarijärvi's national female dress, reviewed in October 2018, is also on display.

Red thread 11/6/2022 - 8/1/2023

The exhibition curated by textile artist Anna-Maija Aarras, from Turku, who has had a long career, brings Finnish contemporary textile art to Saarijärvi. The artists of the exhibition include Inka Kivalo, Minna-Maija Lappalainen, Ulla Pohjola, Heli Ryhänen, Ann Sundholm, Anu Tuomi, Heli Tuori-Luutonen, Kristiina Wiherheimo and Anna-Maija Aarras. Environmental art is also exhibited in the museum's outdoor area from mid-July until autumn.

Between words. Synnöve Dickhoff Gallery in Jarska 18/6 - 28/8/2022

Art produced by graphic and textile artist Synnöve Dickhoff (born 1964), from Petäjävesi, is exhibited at Tapper Family Juhola House barn gallery. His works are memories and observations of persona experiences and reflections of the surroundings. The works can be interpreted as graphic narrations on the pages of a diary, between words.

Saarijärven museon ystävät ry Association has sponsored the exhibitions and events of the museum.

OPEN

16.2.-22.5. Wed-Sun 12 noon to 5 p.m.
11.6.-31.8. Wed-Sun 12 noon to 6 p.m.
1.9.-30.12. Wed-Sun 12 noon to 5 p.m.

PRICES

adults 9 €
children (4-12) 4,50 €
group of adults 4,50 €
(over 10 people.)

www.saarijarvi.fi/museo

044 4598 413
Herajärventie 2,
43100 Saarijärvi



Main
attractions
free of
charge!

MUSEUM YARD

You are welcome to admire the items on the museum yard on your own.



THE TRADITIONAL PLANT GARDEN

lets you see the best of perennials! The garden, established in 1995 by the Saarijärvi Friends of Nature, is home to such traditional plants as redleaf rose, mountain cornflower, horseradish, and many others. The purpose of the garden is to act as a local plant genome bank.

THE SCULPTURE PARK

showcases sculptures by artists living or born in Saarijärvi. The featured works are by e.g. Kain Tapper, Frans Toikkanen, Hannes Aute-re, Arvo Siikamäki, and Harald Karstén.

THE SHORE MEADOW

is taken care of by the Saarijärvi Friends of Nature. The meadow is home to a family of sheep in the summer, and you are free to come and say hello to them. The society feeds the sheep and looks after them.

THE MUSEUM CAFÉ

expands onto the museum courtyard and terrace in the summer. You can buy local knowledge, art publications, and timeless gift items at the café shop.



STONE-AGE VILLAGE

Come and experience the naturally beautiful Summasaari with its numerous stone-age settlements!

The oldest settlement in the area is 9,000 years old, and the most recent pre-historic discovery is an iron spearhead from one thousand years ago. The settlements in the area have been reconstructed according to the discoveries made during the several archaeological digs. The main feature of the Summanen village is everyday life in the stone age. It seems like the villagers have only gone away for a moment.

Here, stone age has been converted into a life-size village where you can experience the stone-age lifestyle and get to know stone-age housing, items, and tools.

The region is home to the Summanen village, the path of traps and the ancients, as well as Yläkylä where stone-age dwellings are exhibited. All destinations are based on archaeological discoveries.





THE SUMMASJÄRVI LAKE IMPACT CRATER EXHIBIT IN THE STONE-AGE VILLAGE

Only a couple hundred impact craters are known around the world. Finland competes with Estonia for the title of the most cratered country in the world. One of such impact sites is in lake Summasjärvi on the southeastern side of Saarijärvi, which crater was discovered in the summer of 2018. It was Finland's twelfth verified impact crater at the time of its discovery. With this finding, the late stone-age era on display at the Stone-Age Village was expanded even farther into the past with an exhibit about the Summanen impact crater.

A celestial object impacted into the lake by the village no more than 1,880 million years ago, generating an enormous crater. Probably reduced in size by the ice age and geological erosion, the current crater is about 2.6 km in diameter and is entirely submerged. Although the terrain feature was confirmed as a crater only recently, it became a site of interest for geologists at the beginning of this millennium. Indications about the existence of a potential impact crater were obtained by aerial surveys of the area conducted by the Finnish Geological Survey, which revealed an area of heightened electrical conductivity in Summanen. As a result of investigations in the area in the summer of 2017, items such as impact stones or shatter cones were found in the area, which are indisputable evidence of an ancient impact.

One of the shatter cones found southeast of Summanen in Kyyränkylä was put on display on the Lampola yard in Lannevesi, and another one is exhibited in the Stone-Age Village. In addition to the shatter cone, the exhibit consists of information boards compiled by the Saarijärvi Museum and written by Ph.D. Teemu Öhman of the Arctic Planetary Research Institute. Saarijärvi reacted quickly when placing the crater on show, as the Stone-Age Village display is only the third impact crater exhibit in Finland. Similar exhibits have been arranged earlier at the hotel Kivitippu in Lappajärvi and in Söderfjärden near Vaasa – Keuruselkä is only at the planning stage of an exhibit.

Even
children will
like it here!

Read more about the Stone-Age Village, its opening hours, and prices on the next double page.



Practice shooting a bow and arrows under supervision!

STONE-AGE VILLAGE FOR CHILDREN

All buildings and equipment have been made to scale with children. In their very own village, children can get to know stone-age life on their own by playing games – all the way from hunting to stone-age living!

STONE-AGE LIVING AND TREASURE HUNTING

The dig site intended for children lets them look at pre-historic research methods and try their luck as archaeologists – they're sure to find something here!

In the village, children can grind rocks, decorate comb ceramic pottery, and fish and hunt with traps. If the hunt is lucky, they can start a fire with a fire drill and make a meal using comb ceramic pottery and tools.





STONE-AGE TRAVELLING AND HUNTING

Find out how efficient stone axes and chisels were and how much a pre-historic boat could carry by trying them yourself! All travellers must wear life jackets for safety.

TRIPS TO THE STONE AGE!

Weekly guided tours on ancient nature paths, stone-age adventures, trips, and activity sessions are hosted in the village during the summer season. The activity sessions consist of getting to know different materials, trying out handicrafts, doing together and tasting different things. The themes vary on a weekly basis, focusing for example on how to make bark bread, fishing nets, fires, birch tar, bows, or ropes by ancient methods. Participants get to make a small souvenir for themselves using bark, stone, antlers, or leather.

Activity sessions for the whole family during summer season!



The guided village tours immerse you in the comb ceramic period, looking at village structures, tools, and everyday activities. The path tours consist of seeing the destinations and the information and assignment boards by the ancient path.

Use the **Tarinasoitin service** to hear more about the village and pre-historic times using QR codes. www.tarinasoitin.fi/kivikyla

The village website provides you with basic information and assignments for the ancient nature paths!



OPEN

Check the opening hours on our website:
www.saarijarvi.fi/museo

PRICES

family ticket 33 €
(max. 5 people)
adults 10 €
children (4-12) 7 €

044 4598 425

Kivikiveentie 10 a
43130 Tarvaala





TOIVI JÄRVINEN ARTIST RESIDENCE

The artist residence, owned by the Manilla Art Foundation of Saarijärvi, presents a complete house interior as well as an art collection put together by Toivi and Osmo Järvinen, consisting of Finnish art from the 1880s to the 1980s. The destination is located in a museum area.

Tours and guides available on order via the Saarijärvi Museum.

044 4598 413 / 044 459 8268

Herajärventie 2, 43100 Saarijärvi



TAPPER FAMILY HOUSE JUHOLA

The estate and childhood home of the Tapper artist brothers. A guided path is available near Juhola, showcasing important places related to the artistic production of the brothers.

We accept the Museum Card!

OPEN 18.6.-28.8. Sat-Sun noon to 4 p.m.

PRICES	adults (over 15 y)	8.00 €
	children (4-12 y)	4.00 €
	pensioners	4.00 €

044 459 8413 / 044 459 8268

Ryöppäläntie 59, 43130 Tarvaala



GENTRY HOME MUSEUM AND RUNEBERG EXHIBIT

The museum operates in a building dating back to the 1780s. There, you can see how our national poet J. L. Runeberg lived during his years at Saarijärvi and how the gentry lived in the past. There is an exhibit upstairs with the room in which Runeberg lived while working as a private tutor.

Tours and guides for groups available on order via the Saarijärvi Museum.

044 4598 413 / 044 459 8268

Kolkanrinteentie 39, 43250 Kolkanlahti



HERALA ARTIST RESIDENCE

The Herala artist residence displays paintings by the Saarijärvi-based artist Aune Herala as well as artworks by other recognised Finnish artists.

Tours and guides for groups available on order via the Saarijärvi Museum.

044 4598 413 / 044 459 8268

Heralantie 3, 43100 Saarijärvi

CULTURE TOUR

Saarijärvi city centre buildings, cultural landscapes, sculptures, and monuments

SCULPTURES AND MEMORIAL

- 1 Museum sculpture park
Herajärventie 2
- 2 Irene Mendelin's memorial plaque
Paavontie 50
- 3 Memorial for those gone to the Winter and Continuation wars Koulukeskus
- 4 Karahka and Poem, Lukiontie
- 5 Saarijärvi shore
Uimahalli (inside), Sivulantie 6
- 6 Ankara laulu / Sanan säilät & Alkava
Sivulantie 11
- 7 Huuto vedestä Lukion puisto
- 8 Surumarssi
Läntinen hautausmaa, Paavontie 18
- 9 Alkuvoima Paavonaukio, Kauppakatu 5
- 10 The church area
Paavontie 8
 - Paavo' statue
 - Veteran's pillar
 - 1918 memorial
 - Memorial for the Karelian dead
 - Memorial for previous Saarijärvi churches
 - Memorial for those who died in the Civil War
 - Hammarén's grave statue
 - Grave of Hannes Autere
 - Native spirit hero statue
 - Salmilainens' memorial

- 11 Matthias Calonius
memorial monument
Paavontie 1

- 12 Arc de Triomphe
Myllymäentie

BUILDINGS AND CULTURAL LANDSCAPE

- 13 Säästölä Ilolantie 6
- 14 Saarijärven tsasouna
Matosalmentie 1
- 20 Community hall Oppitie 1
Gallery Ahku Oppitie 2
- 8 Western cemetery
Paavontie 18
- 15 Härkämänty Paavontie 21
- 16 Old common school
Karhumäentie 11
- 17 Päiväkumpu former day-care centre
- 18 Youth centre Paavontie 13
- 19 Saarijärvi church
Paavontie 8
- 10 Soldier's graveyard,
The old cemetery
Paavontie 8
- 11 Tarvaala clergy house
Paavontie 1





Open every day
as of 6th of June 2022
for the duration of
school holidays from
11 a.m. to 6 p.m.,
even on Midsummer.



VEIJARI ACTIVITY PARK

Spend a relaxing summer's day in a natural park for the whole family!

Veijari combines activities, animals, and beautiful nature. You can go on adventures on land and in the water with various activities. Here you'll find e.g. the renovated bouncy house, bouncy castles, and pedal cars. You can go on the water in canoes, boats, and rafts; or go for a refreshing swim on a hot day!

The park's petting zoo is home to ponies, alpacas, sheep, pigs, chickens, and many other animals. The animal house contains more exotic friends like snakes and lizards. The small animal house is home to rabbits and other rodents. The aquarium houses various fish found in Finnish lakes. Pony walks are scheduled twice a day.

Veijari activity park has much to see and do for one day. When you purchase a day ticket, we will let you into the park for the same price the following day! The offer is included in all of the above ticket types until the end of the season.

The summer café at Kappellilampi is open every day from 11 a.m. to 6 p.m.!



0400 621 663
Puistotie 1
43250 Kolkanlahti

SEE PRICES AND ADDITIONAL
DETAILS ONLINE
www.puuhapuistoveijari.fi



There is plenty to see at Saarijärvi in the summer –
whether you are into music, sports, theatre, art,
lectures, or even festivals!



Take a look at our summer programme:
www.visitsaarijarvi.fi/saarijarvenkesa





SAARIJÄRVI CHURCH

A church in the middle of town!

The Saarijärvi parish was established in 1628. The current church was built in 1846 to 1849, and it is the third church to be built on the same spot. The previous churches were built in 1628 and 1649.

The church is a masterpiece of 19th century design and construction with an 18-meter-wide cupola dominating the main hall. Such a sizeable cupola would normally require a stone frame, so to find one in a wooden church is counted among the notable achievements of Finnish architecture in the 19th century.

You can also visit the church by making an appointment with church official Pia Rantala. Prayer hours can be arranged in conjunction with your visit; please inquire within the church registry office.

While your there, do also visit the Pylkönmäki church designed by Jaakko Kuorikoski in 1864 and renovated by Alvar Aalto in 1926. Keskustie 40, 43440 Pylkönmäki



church official Pia Rantala 040 8246 825
church registry office 040 1534 736

A church guide is on location in the summer, see more details at www.saarijarvenseurakunta.fi

Paavontie 8
43100 Saarijärvi





ATELIER LEIJONATORNI

Enjoy art and a unique atmosphere at Atelier Leijonatorni, exuding national romanticism.

You never know what you'll find!

Art commissions also accepted

**Painter
Jouko
Hackzell**

OPEN

Mon-Fri 10 a.m. to 5 p.m.
Sat-Sun noon to 3 p.m.

0400 820 423

Rahkolantie 49 B
43100 Saarijärvi



ART GALLERY AHKU

The art gallery established by Saarijärven museon ystävät ry Association in the summer of 2021 is located in a historical building, in the centre of Saarijärvi, which the Paavonseutu Co-op previously used. The name of the gallery, Ahku, comes from Central Finland's northern dialect word, which means passion, will and desire.

In addition to temporary exhibitions, the gallery also sells art and auxiliary products.



The former building of the Paavonseutu Co-op
Opittie 2 / Paavontie 30, 43100 Saarijärvi
samunystavat.fi/ahku

Ahku
GALLERIA

Art gallery at
Saarijärvi



PYHÄ-HÄKKI NATIONAL PARK

Enter the wild to find peace, go hiking in an unique environment!

Pyhä-Häkki lets you experience the wind in pine trees that are hundreds of years old, the song of the flowing water in brooks, and the scent of the bog. The Riihineva trail (1.4 km) and the Mastomäki trail (3.5 km) are particularly suited for families with children. The most popular route, the Kotajärvi trail (6.5 km), runs around the entire park from wild woods to duckboards. The Tulijärvi trail (17 km) is best for those looking for a longer hike. All routes have been marked on site with dedicated colour symbols.

There is a cooking shelter by Kotajärvi with a masonry fireplace and a separate fire pit. You can get drinking water from the well at the information centre.

The national park allows temporary camping, which is recommended at the Tulijärvi shelter situated very close to the park. The Poika-aho cabin houses sheep herder vacationers in the summer, and in the spring and autumn the cabin is available for single night rentals.

Guided hikes and other services are available from the national park partners, see more details at www.luontoon.fi/pyha-hakki/palvelut/yhteistyotahot



See a video about the destination!

Take a look at the map p. 62

Metsähallitus customer service: 020 6395 270,
Mon-Fri 9 a.m. to 3 p.m.

www.luontoon.fi/pyha-hakki

Viitasaarentie 2119
43170 Häkkilä





KULHANVUORI AND SYVÄOJANROTKO

A peaceful day-trip destination
for those looking for eskers and
gulches.

Experience one of the tallest points in Central Finland, the Kulhanvuori hill rising 260 meters above sea level, in the Kulha nature conservation area. Trail length is about 3.5 kilometres.



Go hiking in the mysterious Syväojanrotko gulch, which is a canyon about one kilometre long. Its vertical cliff faces rise up to the treetops. The ice on the cliffs melts as late as in the summer, as the sun only shines on the northeastern wall of the canyon.

There is a fire pit in the area with firewood readily available.



**See a video
about the
destination!**

Take a look at
the map p. 63

Metsähallitus customer
service: 020 6395 270,
Mon-Fri 9 a.m. to 3 p.m.

www.luontoon.fi/kulhanvuori

Konttimäentie 1100
43220 Mahlu



JULMAT LAMMIT

See the canyon ponds, steep cliffs, and dark woods where young Runeberg went wandering and writing his poetry! There is a trail less than 3 kilometres long that goes around the pond area with a fire pit and a scenic outlook. There are three ponds by the trail which is part of the 12-kilometre **Runeberg nature trail**. The trail is marked with blue posts.

Julmat Lammit is a nature conservation area where you get to see the effects of the ice age on the rocks and soil and the formation of the terrain.



See a video
about the
destination!

Kokkolantie 886
43250 Kolkanlahti

Take a look at
the map p. 64



THE SEVEN LAKES CANOE ROUTE

Enjoy no fewer than seven lakes on one trip going around the canoe route surrounding the centre of Saarijärvi city. There are several rest areas and over-night cabins along the route.

The tour includes the lakes **Saarijärvi, Kallinjärvi, Summasjärvi, Kiimasjärvi, Pyhäjärvi, Iso- ja Pieni-Lumperoinen**.

Take a
laid-back
canoe trip!

Equipment rentals by
Saarijärven Latu, see page 35

Get more details and a map via the QR code!





HAIKANKÄRKI

A trip to Haikankärki in Summassaari shows you how stunning the Saarijärvi landscape can get! You will travel along the top of a tall esker among pine trees and lakes on both sides. The lake comes nearer and nearer as you approach the end of the trail. Stop at the fire pit to enjoy your lunch and the view! Trail length is about 15 kilometres

Kivikirveentie 10
43130 Tarvaala
Take a look at the
map p. 65



SAARIJÄRVI RAPID ROUTE

Wild rapids, calm rivers, beautiful lakes, and a Saarijärvi cultural landscape. All of this is provided by the easily traversed 82 kilometres long landscape route **Kyyjärvi-Karstula-Pylkönmäki-Saarijärvi**.

You will go down 22 rapids totalling some 7 kilometres on this longest interconnect-ed rapid route in all of Southern Finland.

Get more details and
a map via the QR code!



ANCIENT NATURE PATHS

The ancient path is a trail approximately 2 kilometres long, along which different destinations are presented and pre-his-toric themes expounded on by using in-formation boards. The guided boards by **the nature trail** showcase animals and plants in the area, tell you about con-servation, and give tips on how to make environmentally friendly choices.

Kivikirveentie 10 a
43130 Tarvaala
Take a look at the
map p. 65



CENTRAL FINLAND TRAIL

The trail lets you go cross-country skiing and hiking from Saarijärvi to Kannonkoski through the Pyhä-Häkki national park. The trail includes up to 40 kilometres of ski and hiking trails in the winter.

The trail begins in the centre of Saarijärvi city at the address Lähdekuja 2.

Inquire at recreati-onal
services
044 4598 298





ANY LUCK IN FISHING?

Catch the best
tips for fishing
and all you need
to know about
permits!

Saarijärvi allows fishing on several bountiful lakes such as the clear Pyhäjärvi, on several rapids, and on the Pajulampi pond by the city centre.

You do not need to be a professional to try your luck, just hook a worm and give it a go. Dawn and dusk are the best times for fishing, as this is the time when the small fish come out of hiding to hunt for insects. When the small fish get going, the bigger and more valuable fish do too, so this is the time when you can catch the best fish. What could be more exciting than tiring a silver-sided trout in the dusk of a summer night!

FISHING LICENCES

K-Market Saarijärvi

ALL LICENCES

Paavontie 28, 43100 Saarijärvi

0100 5666

Akun Radio

LAKE, CRAYFISH, RAPID, AND SEASONAL LICENCES VARIOUS FISHING EQUIPMENT

Nahkurintie 4, 43100 Saarijärvi

0400 497 119

SEO Ranta-Kivi

ALL LICENCES

Jyväskyläntie 34, 43100 Saarijärvi

014 3333 777

www.kalakortti.com

RAPID LICENCES, FISHING AREA LICENCES



FISHING SPOTS IN SAARIJÄRVI

KONTIJOKI - KOTAJOKI, RAPID FISHING

The fishing area is expansive, as the rapids are over ten kilometres long combined. The destination is at its best in early summer and autumn, because there might not be much water in the rapids in the middle of summer. Silmäkoskentie 19, 43100 Saarijärvi

MAJAKOSKI, RAPID FISHING

Stocked species in the rapid are zander and trout. Natural species include perch, grayling, and pike. Casting and fly fishing are allowed. There is a shelter and a fire pit in the area.

Kallinjärventie 2, 43130 Tarvaala

MUITTARINKOSKI - RIEKONKOSKI, RAPID FISHING

The rapids are about 5 kilometres from each other, the Muittarinkoski rapid runs into the Mahlunjärvi lake and the Riekonkoski rapid runs into the Saarijärvi lake. There is a shelter and a fire pit at Riekonkoski. **Riekonkoski**, Riekontie 138, 43250 Kolkanlahti. **Muittarinkoski**, Muittarintie 570, 43240 Lehtola

PAJULAMPI, RECREATIONAL FISHING DESTINATION

This licence-based recreational fishing destination is maintained by the Saarijärvi Association. The pond is stocked with rainbow trout and whitefish. If you want to fish from a boat, you can rent one at Ranta-Kivi at the address Jyväskylätie 34. Hyppyrimäentie 5, 43100 Saarijärvi, 014 3333 777.

TIPS

Worm fishing is especially amusing for the children in the family. It is very exciting when the float sinks beneath the water and the rod bends in the hands of the small angler. Did I get a perch or maybe even a rainbow trout? Rent a boat and try your luck at e.g. the Pajulampi pond by the city centre.

Hear the roar of water and experience something unforgettable with rapid fishing! You may even see a white-throated dipper observing you as you fish. You can purchase a casting and trolling licence that covers the areas of several fishing associations.

Get your licence, make some lunch and go fishing!



The contact details for all associations can be found at the address

www.saarka.net/osakaskunnat

See more details and a licence price list on the Saarijärven Osakaskunta website.

www.saarijarvenosakaskunta.net

A map and more details about boat landing spots can be seen on pages 58-59.



PAAVONRINTEET

Downhill skiing and snowboarding less than four kilometres from the city centre!



Paavonrinteet offers five illuminated slopes for downhill skiers, varying in length from 70 meters to 750 meters. There is a street and rails for snowboarders on the third slope.

There are two lifts in the area, the children's lift being free of charge. Children below six can go skiing for free on the big slope, if accompanied by an adult and wearing a helmet!

There is a ski rental service that will provide you with all the equipment you need for skiing and snowboarding.



Café Keko offers coffee services and ticket sales. There is also a sledding hill in the area!



LIFT PASSES

adults / children 6 to 12

1 h 15 € / 10 €

2 h 18 € / 14 €

3 h 23 € / 18 €

day rent 28 € / 22 €

EQUIPMENT RENTALS

1 h 10 €

2 h 13 €

3 h 18 €

day rent 25 €

OPEN

Tue-Fri 3 p.m. to 7 p.m.

Sat-Sun 11 a.m. to 6 p.m.

Mon closed

DURING HIGH SEASON

Opening hours

announced on

Facebook.

www.saarijarvi.fi/paavonrinteet

044 4598 982 /
ski rental



You can find us on the **ski.fi** website as well



Right next
to the Paa-
vonrinteet

KUSIAISMÄKI SKI CENTRE

Competitions, fitness skiing, and beginner trails!

Ski trails running in varied terrain provide good conditions for competitive and fitness skiing. There are beginner and recreational trails too.

Easy illuminated 1, 2, and 3 km trails for fitness skiers and a 1.5 km trail around the Pajulam-pi pond. 3, 5, and 8 km trails for experienced competitive skiers.

The Kusiaismäki ski centre also includes K-10, K-26, and K-44 ski jumping ramps, the latter two being available in the summer too.

Other services include a waxing shelter, a testing slope, a break hut by the start/finish line, and a service building with a toilet.



There is a disc golf course available in the summer.

The ski trails are also suitable for jogging.

Don't overlook the bountiful berry and mushroom grounds in the area!



www.saarijarvi.fi/hiihda

044 4598 295/
vapaa-aikatoimi

Hyppymäentie 1
43100 Saarijärvi



SWIMMING HALL - FITNESS CENTRE AARRESAARI

Come spend a refreshing day with the whole family. Aarresaari lets you relax, work on your fitness, or get a nice massage!

A 25-meter fitness pool with four tracks and low jumping podiums is good for fitness swimming and aquajogging. Aquajogging belts are available at the swimming hall.

You can relax in the therapy pool with water massage spots and a whirlpool rest area. There is additionally a whirlpool bath and a cold water pool in the hall. A sauna and a steam sauna are available for relaxing and warming up after

There is 36-meter waterslide and a children's pool for kids and those of a youthful disposition, where the deepest point is one meter deep.

Guided water-based exercise on almost every day of the week! See all groups and additional details at the address www.saarijarvi.fi/sisalto/ohjatut-ryhmat



OPEN

Mon 1 p.m. to 8.30 p.m.
Tue 7 a.m. to 9 a.m./ 12 noon to 8.30 p.m.
Wed 7 a.m. to 9 a.m./ 12 noon to 8.30 p.m.
Thu 7 a.m. to 9 a.m./ 12 noon to 8.30 p.m.
Fri 1 p.m. to 8.30 p.m.
Sat 12 noon to 5.30 p.m.
closed on Sundays and during midsummer

PRICES

adults 6,50 €
children, students 4,40 €
pensioners 4,90 €
family ticket (max. 5) 20 €

044 4598 275 /
control room
044 4598 278 /
cafe



GYMS

Whether you want to run on a treadmill, punch a bag, or work on your abs, gyms provide you with everything you need for a complete workout!

In addition to the broad selection of TechnoGym equipment upstairs, there is a free-weight room downstairs for the heavy lifters! Set what ever weights you want on all equipment. When the Aarresaari centre is closed in the summer, you can buy gym cards at the café Frisee at the address Kauppakatu 1, 43100 Saarijärvi.



OPEN

Mon	1 p.m. to 8.30 p.m.
Tue-Fri	7 a.m. to 8.30 p.m.
Sat	12 noon to 5.30 p.m.
Sun	closed

PRICES

adults	5 €
children, students	3 €
pensioners	4,50 €

www.saarijarvi.fi/uimahalli

Sivulantie 6
43100 Saarijärvi



Access with charge card on Sundays
and midsummers between 6 a.m. and 11 p.m.!



LIIKELATAAMO

A bowling alley and gym under one roof!

Make a
reservation
online!

Liikelataamo will keep you entertained with bowling, glow bowling, exercising, hanging out, and playing games in a relaxed atmosphere to the tunes of good music!

The mood at Lataamo is unique, and the restaurant (with an alcohol licence) and service are no worse than excellent. You are welcome to stay and have a good time, Lataamo is like a living room for everyone! We can also do group services with sauna bathing and bowling.

Our new, versatile, and well-equipped gym lets you enjoy casual exercise or train seriously – whatever your own goal may be. Don't forget about our individual and small group coaching.



Don't hesitate to come from afar, as this needs
to be experienced in person!

OPEN

Mon-Sun, see our
opening hours on
our website.

PRICES

bowling	from 20€ / h / lane
glow bowling	24€ / h / lane
shoe rentals	1,5 € / pair

www.liikelataamo.fi

050 3398 747

Rentontie 7
43100 Saarijärvi





An
educational
institute in the
middle of
Finland at its
most
beautiful!

FINNISH YOGA INSTITUTE

Come and enjoy yoga in the nature!

Owned by the Finnish Yoga Federation, the Yoga Institute has been providing yoga courses since 1973.

Enjoy yoga in a homely environment in the middle of nature. Calm and peaceful surroundings provide the best conditions for getting into yoga.

The Institute offers member courses throughout the year, and even for beginners. The courses focus on different yoga themes. The courses last for a weekend or up to a whole week. The teachers are experienced and meritorious yoga teachers from all over Finland. The training of yoga teachers is also centred on the Yoga Institute.

LOCAL FOODS AND SMOKE SAUNAS

The courses offer delicious and diverse vegetarian dishes, including fully vegan ones, using as much locally sourced and grown foods as possible.

There are warm dishes as well as salads on offer.

In the summer, the course participants get to enjoy a smoke sauna and a private beach.

There are plenty of opportunities for outdoor activities during your free time; you could for example hike to the Riekkonkoski rapids.



Register for
the courses in
advance!

All courses are available at
www.joogaliitto.fi/kurssikalenteri

www.joogaliitto.fi
014 421 670

Taipaleentie 122
43100 Saarijärvi



Get in
touch and let's
plan the right
horseback riding
experience for
you!

HORSEBACK RIDING AT THE PUROLA FARM

Come and experience the
unique countryside calm on
horseback!

Purola Farm offers accommodations as
well as various riding experiences for vete-
rans and complete newcomers alike.

TWO-HOUR CROSS-COUNTRY RIDE 58 €

A two-hour tölt or gallop trail where the
speed is adjusted according to the expe-
rience level of the riders. Takes place on al-
ternating forest paths and motor roads. For
2 to 6 persons.

The two-hour trail for beginners includes an
hour of getting to know your horse, learning
horsemanship and the basics of riding, and
then a one-hour riding trip across varying
terrain. For 3 to 5 persons.



HALF-DAY TRIP 88 €

For riders who know the basics of riding and
can control their horse during gallop, a speed-
ier trip across forest paths and small motor
roads. Trip lunch and open fire coffee served
at a goahti shelter along the way. Approx-
imately three hours of riding, total trip duration
about four and a half hours. For 4 to 6 persons.

We offer 1 to 2 day hiking trips, gait riding les-
sons on a field, and longer camps, weekends,
courses, and trainings. Yin yoga is our camp
novelty. The Purola Farm stable is a member of
the Finnish Riders' Federation and the Finnish
Icelandic Horse Association, and a winner of
the Finnish Trail Riding Association's Priimatalli
certificate.

DETAILS AND RESERVATIONS 040

5121 432 /
Pipisa Wagner

www.purolafarm.fi

Kekkosentie 491
43100 Saarijärvi





DISC GOLFING!

Saarijärvi is home to several free disc golf courses. The required equipment can be rented on a library card at the Saarijärvi library; read more on page 35.

KUSIAISMÄKI

A national championship level course about 5 km long. In addition to the 20 holes on the course, there are two practice spots available. The course is very hilly with varying elevations.

Hyppyrimäentie 1-2, 43100 Saarijärvi

PYLKÖNMÄKI

9 holes along a 1.6 kilometre course. The terrain is rolling with some elevation differences. Suitable for both beginners and experienced players. Equipment available for rent at Keskustie 28, 43440 Pylkönmäki

Rahikaisentie, 43440 Pylkönmäki

SUMMASSAARI

A 9-hole course in hilly terrain.

Summassaarentie 180, 43100 Saarijärvi

KALMARI

The 10-hole Nahjus course at Kalmari has been built close to a village house alongside a cross-country jogging trail.

Nahjuksenraitti 12, 43270 Kalmari

AHVENLAMPI

A 19-hole course in an easily traversed heath forest.

Ahvenlammentie 62, 43250 Kolkanlahti



An enjoyable
activity for
the whole
family!



KUKONHIEKKA ENTERTAINMENT CENTRE

Kukonhiekka is one of Finland's most popular summer dance venues, located on the shore of Pieni Lumperoinen lake by the Saarijärvi city centre.

Dances are arranged there on Saturdays from Mayday eve until mid-October with top Finnish artists. Full alcohol licence, three bars, café, grill, karaoke, two terraces with a view. Electrical sockets for 6 vehicles and a toilet/shower for overnight guests.

Check opening hours and performers on our website.
Party catering services also available!



www.kukonhiekka.com Kukonhiekantie 35
040 5402 086 43100 Saarijärvi

Summer
dances every
Saturday!



KOSKEEN OY

You will learn how to paddle on lakes, flowing waters, and foaming rapids during a four-hour canoe trip. Our boats are two-person Indian canoes.

The most enjoyable rapid section of our trip is called the Heijostenkosket rapids. We will paddle from one rapid to the next in quickly flowing water over this three-kilometre rapid section. After the trip we will have possibility nice and warm in a bunker smoke sauna and enjoy salmon cooked on an open fire and a pit roast.

We can modify the canoe or rapid trip to suit your wishes!

Canoe guide Hannu Strengell
0400 541 766

Bring your
clients along on
a nature trip and
teach them how
to go down
a rapid!



ARI'S HIKING AND ADVENTURE SERVICE

Services include rapid rafting on rubber rafts in the summer, canoeing and kayaking on the Saarijärvi rapid route, and natural rock climbing!

Winter services include snowshoe safaris, ice climbing, snow sculpting, and snow building.

Also bachelor/bachelorette parties, massages, and Kalevala limb corrections

Guide Ari Toikkanen
040 7336 885

Experiences
and adventures
in Finnish
nature!



FISHING GUIDE SERVICES TEEMU NIEMINEN

Come and experience the excellent fishing waters of Saarijärvi's route and enjoy the beautiful landscapes of Central Finland. The services include fishing guide services and wilderness dining for both private individuals and companies and foreign tourists. For groups of 1-4 people fly fishing and trolling in the summer.

In the winter, ice fishing and bait fishing excursions are organised.

Fishing guide services
Teemu Nieminen
040 3536601



Fishing guide
services in
beautiful
landscapes.

PLENTY TO DO

EXERCISE

AUTIOLAHDEN BEACH VOLLEY

A quality beach volley court right next to the Autiolahti beach. Mäntytiä 4, 43100 Saarijärvi

SUMMASSAARI TRAINING STAIRS

Training stairs with 155 steps, completed in the summer of 2018. The stairs are located near Haikankärki. Summassaarentie 180, 43130 Tarvaala

PLAYGROUND

RUNEBERGINPUISTO PARK

The park includes a playground for children and exercise equipment for the elderly.

BEACHES

AUTIOLAHTI

A small pier and dressing booths on the beach. Swings, a small slide, and a sandbox for children. Mäntytiä 4, 43100 Saarijärvi

FOR DAREDEVILS

ICE SWIMMING

A sauna is hot for swimmers at Kunnantupa on Tuesdays and Fridays at 5 p.m. to 9 p.m. from October to mid-April. Provided by Saarijärven Latu Paavontie 4, 43100 Saarijärvi

GO-KARTING

The varied outdoor karting track at Saarijärvi's Kolkanlahti is open on Thursdays and Sundays at 6 p.m. to 9 p.m., rental equipment available on Thursdays. Inquire at 040 700 4123 / Kari Kirijatshenko

AIR GUN RANGE AT THE SWIMMING HALL

A 10-person air gun range for rifles/pistols and two game targets. Supervised evenings in the winter on Mondays and Thursdays at 6 p.m. to 8 p.m. Details at Saarijärven Ampujat ry / Mauri Kempainen 040 1686 486

MANSIKKANIEMI

Dressing booths and pier with a jump tower, platform heights 1, 3, and 5 meters. Swings and a small slide for children. Mansikkaniementie 26, 43100 Saarijärvi





RENTAL EQUIPMENT

It's nice to try new things when on holiday. How would you like tennis, or maybe snowshoe hiking?

KAYAKS, CANOES, SNOWSHOES, TOURING SKATES, AND HIKING SUPPLIES

Saarijärven Latu rents canoes and kayaks with all necessary safety equipment (life vests, paddles, backup paddle for rapids, kayak covers, watertight barrels, rapid helmets, and canoe trailers). The association also rents out some snowshoes, touring skates, and other hiking supplies.

Longboat rowing on Tuesday evenings in the summer, free of charge. 150 € for groups, available on order. Inquire at 040 8356 191.

Get in touch and make
a reservation!

www.saarijarvenlatu.fi

046 6308 529

TENNIS AND DISC GOLF EQUIPMENT, UNDERWATER BINOCULARS

The Saarijärvi city library rents out tennis rackets on your library card. There is a free tennis court inside the ice rink at Valotie 5.

You can also lend out disc golf equipment and underwater binoculars with your library card, allowing you to take a peek into underwater life in the form of plants, clams, and other animals living on the bottom. When moving calmly, you might even see some fish!

LIBRARY OPEN

see our opening hours:
www.saarijarvi.fi/kirjasto

044 4598 619

Sivulantie 12
43100 Saarijärvi



RUUSTINNA

The over 120-year-old main building and even older surrounding buildings bring out memories of old-timey Saarijärvi. Our rooms are on the second floor of the main building and around the vicarage yard. The accommodations include a hearty breakfast and lakeside views enjoyable from morning until night.

The Ruustinna area is part of a national cultural environment. We are within walking distance of the city centre across the beautiful Palvasalmi bridge. There is a traditional and atmospheric beach sauna by the shore. You can go on a boat or kayaking trip on the Saarijärvi or Pieni Lumperoinen lakes.

OPEN

detailed information
on our website.

www.ruustinna.com

info@ruustinna.com
041 3192 332

Paavontie 1,
43100 Saarijärvi



AHVENLAMPI CAMPING

A naturally beautiful camping ground by a pond. A wide selection of different cabins for all kinds of groups and caravan and tent spots. Beach saunas, a café, and a child-friendly beach at your disposal.

The camping ground is located less than two kilometres from the Veijari activity park!



www.ahvenlampicamping.net
0400 505 768

Ahvenlammentie 62
43250 Kolkanlahti





A cabin atmosphere and natural experiences in the peace of the countryside all year round!

JAKOLA FARM

Villa Mertala a large log house by the Karankajärvi lake, a child-friendly beach with good fishing, a barbecue shelter, and a boat.

Mertaranta a comfortable sauna cabin with privacy, sharing a beach with Mertala.

Rentola, a renovated farm house and yard in beautiful surroundings, swimming in the Heijostenkoski rapid stream pool 300 m away, fly fishing possible by the rapid.

Maalaishotelli Mulikan HillTon with its versatile party facilities for 100 persons, B&B, kitchen, and sauna.

Dog activity arena Hallin Haukku for dog camps and training.

Jakola car museum with more than 70 rare vehicles on display, restored by the old man of the house, Raimo Oikari. Open by agreement.



www.jakola.fi

040 5653 716

Karajoentie 294 A
43480 Pääjärvi



PUROLA FARM

A rustic inn by the lake Katajajärvi, in the middle of a beautiful countryside scene. We offer inn accommodations, tasty breakfast and dinner, wonderful experiences with Icelandic horses, as well as yoga, guided forest hikes, honey and peat treatments, and team-building, meeting, and party services all year round. Sustainable Travel Finland quality certified.

www.purolafarm.fi

040 5121 432



FARM HOUSE HEPOHARJU

Hepoharju provides breakfast accommodations all year round, three barns available for sleeping in the summer.

The farm is home to horses, dogs, and cats. Children can experience safe riding on horses being walked by instructors! Access to the ski trail network in the winter, fishing by the nearby Riekonkoski rapid in the summer.

www.hepoharju.fi

050 3619 349

Harjutie 44, 43100 Saarijärvi

We also offer horse-back riding, see page 30



SAARIJÄRVI BOOKING

Pleasant and modern accommodations/offices for rent in the centre of Saarijärvi at daily or monthly rent. Rooms for 1 or 2 persons. Shared kitchen, showers, and toilets. Parking spaces on the yard. Possibility to rent a parking spot in a parking garage. All city centre services are close by.

1 person €59-69 / day.

2 persons €79-89 / day.

Payment in advance.

Key pick-up as agreed.

0400 242 838

toimisto@ppwest.fi

Kauppakatu 7 43100 SAARIJÄRVI



KULTARANTA MANSION

On a peninsula of Summassaari island, accommodations for 18 persons in two buildings, additional beds available. Buildings can be rented separately as well. Accommodations, meetings, dinners, company parties, and first aid trainings. Atmospheric hut buildings, a smoke and hut sauna, and a tub.

www.kartanokultaranta.fi

044 2843 628

Kivikirveentie 10 B, 43130 Tarvaala



APARTMENT 28

Beautiful and pleasant holiday apartments by the city centre, with all services within one kilometre.

The apartments have all amenities, electric adjustable beds, and a large TV in the bedroom. Easy access from Mäntytie to the Heramäki fitness trail and a beach close to the building.

050 3573 575

marisa.kinnunen@kstpalvelut.fi

Mäntytie 3 A, 43100 Saarijärvi



KOSKELA FARM

Koskela farm offers peaceful surroundings for travellers by the Pyhä-Häkki national park on a beautiful spot in a Peltajoki river bend between two rapids.

Stylish barn accommodations for 2 persons in the outhouse, additional beds available. A summer barn for two on the yard, space for 2 or 3 camper vans or trailers with electricity, and tent camping.

040 841 4 092

majoituskoskela@gmail.com

Silakkatie 58 b, 43170 Häkkilä





LOMAKOIVULEHTO

Koivulehto offers well-equipped beach cabins liveable throughout the year. All cabins have their own beaches, boats, and fishing equipment. Two of the cabins are by the Seven lakes canoe route and the Saarijärvi rapids route. Excellent berry and mushroom picking spots in the vicinity. Ski trails run by the cabins in the winter.

www.lomakoivulehto.fi

0400 891 240 / 040 5898 218

Kalmarin Kangastie 557, 43100 Saarijärvi



LAUTTAMÄKI TRADITIONAL FARM

A popular summer wedding venue with plenty of cultural and historical significance. A log-walled, open room with space for up to 150 diners serves as the main event hall. Everyone can see the bride and groom and the programme. B&B accommodations for 45 persons in the summer.

www.lauttamaen-perinnetila.webnode.fi

0400 202 610

Kuoppalantie 1161
43440 Pykönmäki



See more accommodations by scanning the QR code!
www.visitsaarijarvi.fi/accommodation



LAMMINKANGAS

Lamminkangas cabins are situated at the shore or high up on a hill. They also have their own private beach area with saunas. The cabins have been furnished in a cosy way. The farm is also an ECEAT eco-agrotourism travel destination. The different-sized and -priced self-service cabins can accommodate 2-10 people. Barn accommodation is also possible. Welcome to Lamminkangas!

www.lamminkangas.fi

040 7030 519

Lamminkankaantie 193, 43270 Kalmari



KULTARANTA LOG CABIN

A peaceful and beautiful villa for 4 to 6 persons by the Pyhä-Häkki national park. Bedrooms and a kitchen-living room with all amenities.

No pets allowed.

040 8204 212

Suojärventie 106 B
43170 Häkkilä



ONNELA, SAARIJÄRVI

Onnela is one of the apartments of an 1800s log-built semi-detached house, which is available to use together with its yard areas. Accommodation for six people. If necessary, 2 mattresses can be provided for additional guests. The kitchen is equipped for essential meal preparation. The apartment has a sauna, and there is a small beach nearby, where you can take a dip in one of the cleanest lakes in the region. Baby and children's equipment are available for families with children.

Reservations: airbnb.fi



KONTTIMÄEN KOULU

Konttimäki's idyllic village school is suitable for accommodation, camps, and holidays and a venue for various celebrations and events. Affordable camping-level accommodation for up to 50 people in the vicinity of Kulha's nature protection area. Guests have access to a yard sauna and BBQ shelter in the yard area. Maximum number of people for events is 80 people. There are good hunting opportunities in the vicinity too. During the winter, the village's approx. 40-kilometre-long ski track network starts from the schoolyard.

Konttimäen kyläyhdistys ry
040 778 0540

riittapeltonen310@gmail.com



Visit Saarijärvi



visitsaarijarvi.fi



Saarijärven kulttuuriraitti



THE CULTURAL ROUTE, which has been implemented in cooperation with **Saarijärven museon ystävät ry, Saarijärvi Museum** and **the City of Saarijärvi**, allows you to familiarise yourself with the history of Saarijärvi and the municipality's cultural heritage via the destinations that are situated along Paavontie. The route, which is slightly more than two kilometres long, ends at Saarijärvi museum, where the cultural heritage of Saarijärvi has been recorded, studied and exhibited for more than 70 years

The cultural route starts at the beginning of Paavontie, from Tarvaala rectory at Palvasalmi bay, which was originally an official residence built in 1689 for the parish's curate. The route runs along the current Paavontie all the way to the Saarijärvi museum. You can also walk the route from the museum to the Tarvaala rectory if you wish.

Information boards about the different destinations have been installed along the route. Bollard boards are placed along Paavontie, which provide further details by using a mobile device to read the QR code attached to the bollards. Remember to take the route's brochure (Finnish only) with you before starting your tour!

More information:

visitsaarijarvi.fi/kulttuuriraitti



Paper versions of the brochure are available in the following locations in the centre of Saarijärvi:

- Saarijärven Ruustinna
- Vanhaintavarainliike Kaiho
- Taitokeskus Saarijärvi
- S-Market Saarijärvi
- Saarijärven kierrätyskeskus
- Saarijärven museo



Open the
PDF-brochure



FRISÉE

Enjoy a healthy soup, salad, or buffet lunch in the centre of Saarijärvi city. Vegan lunch option always available. Enjoy special coffee blends, smoothies, waffles, and delicacies from our in-house bakery. You can also buy our products to go or as catering for your party. Enjoy a cold drink or ice cream on our large terrace full of sunshine. We have an alcohol licence. We also sell our own peanut granola and a wide selection of organic tea.

OPEN

mon 9 a.m. to 3 p.m.
tue-fri 9 a.m. to 5 p.m.
sat closed
sun closed

in july

9 a.m. to 3 p.m.
9 a.m. to 6 p.m.
9 a.m. to 3 p.m.
closed

www.frisee.fi

040 7246910

Kauppakatu 1, 43100 Saarijärvi



SAARIJÄRVEN RUUSTINNA

The rich and varied lunch buffet at Ruustinna includes fresh salads, house bread and spread, main courses, soup, and something sweet with your coffee. We respect tradition, but also introduce something new to a familiar meal, prioritising cleanliness and Finnish ingredients. We have an alcohol licence. The Ruustinna has two large halls and two pleasant summer terraces. Our facilities also include a pleasant conference room, Hovikoski.

Our catering service makes delicacies at our own confectionery, delivered to your home or celebration. You can also reserve Ruustinna as a celebration destination. You can spend the night at Ruustinna and its surrounding buildings, and our beach sauna is available for rent as agreed.

OPEN

detailed information on our website.

www.ruustinna.com

info@ruustinna.com
041 3192 332

Paavontie 1,
43100 Saarijärvi





HH KEITTIÖ

HH Keittiö is a kitchen in the shop of the diverse, high-quality, national store chain Halpa-Halli. We offer lunch, burger meals, and à la carte.

A tasty and affordable buffet lunch available Mon-Sun at 10.30 a.m. to 3 p.m.

OPEN mon-sat 10 a.m. to 5 p.m.



www.halpahalli.fi 020 7183 880
Jyväskylätie 33, 43100 Saarijärvi



SEO RANTA-KIVI

Full service station in a wonderful lake landscape! Breakfast service, Rolls hamburger products, and diverse menu dishes.

We offer flexible Fixus spare part and repair services. We also have an electric car recharging station! A barrel tub and trailers for rent.

OPEN summer time

mon-fri 9 a.m. to 8 p.m.

sat 9 a.m. to 8 p.m.

sun 10 a.m. to 8 p.m.

winter time

7 a.m. to 6 p.m.

9 a.m. to 6 p.m.

9 a.m. to 6 p.m.

014 3333 777

Jyväskylätie 34, 43100 Saarijärvi



KARHUN KATTILA

Enjoy your morning coffee, lunch, or afternoon tea with us. We serve home cooking that is made by us to the greatest possible extent.

Buffet lunch served on weekdays at 11 a.m. to 1 p.m.

OPEN mon-fri 8 a.m. to 2 p.m.

www.karhunkattila.fi

041 3172 663

Sivulantie 11, 43100 Saarijärvi

Lunch on weekdays at 10.30 a.m. to 2 p.m.



CAFÉ & RESTAURANT LINNAN LIISA

Linna Liisa's varied cuisine includes lunch and à la carte dishes, Xmeal burgers and PizzaVarikko pizzas. You can eat on site or buy along. Our store offers basic food, drinks and ice cream as well as car accessories. Alcohol license, summer terrace and an unmanned Teboil petrol station is nearby. In addition, direct sales of local producers of bread, pastries and handicrafts.

OPEN

www.linnanliisa.fi

summer time

Mon-Thu 8 a.m. to 6 p.m. / Fri 8 a.m. to 7 p.m. / Sat-Sun 10 a.m. to 7 p.m.

winter time

Mon-Fri 8 a.m. to 6 p.m. / Sat-Sun 11 a.m. to 6 p.m.

040 5210 978 Jyväskylätie 705, Saarijärvi



SAARIJÄRVEN PIZZERIA KEBAB & RAVINTOLA ISABELLA

Kebabs, pizzas, salads, falafels. Eat on the spot or order to go!

Full alcohol licence.

Buffet lunch served on weekdays at 10.30 a.m. to 2 p.m.

OPEN Mon-Sat 10.30 a.m. to 9 p.m.
Sun 11 a.m. to 9 p.m.

014 421 554

Paavontie 15, 43100 Saarijärvi



PAPA'S PIZZERIA

Pizza, kebab, doner, vegetarian Vöner kebab and salads.

You can find us at **Jyväskyläntie 35, 43100 Saarijärvi**

OPEN
Check the opening
hours on our website.

www.papaspizzeria.fi

045 1846006



PRARICHAT

Delicious Thai food on the menu.

Buffet lunch served on weekdays at 10.30 a.m. to 2 p.m.

OPEN Mon-Tue 10.30 a.m. to 2 p.m.
Wed-Fri 10.30 a.m. to 8 p.m.
Sat-Sun 12 noon to 8 p.m.

046 8859 181 Ilolantie 15, 43100 Saarijärvi



MADO BURGER

Hamburgers, pizza, kebab, salads, and falafel.

Closed on Mondays and Tuesdays.

OPEN Wed-Thu 11 a.m. to 9 p.m.
Fri-Sat 11 a.m. to 5 a.m.
Sun 1 p.m. to 9 p.m.

Ilolantie 15, 43100 Saarijärvi 014 423 922



EVÄSTUPA

A multi-service centre in the middle of Pylkönmäki! Services include a Tarmo grocery store, an Alko pick-up point, a lunch restaurant, grill, and café. We sell local foods, gifts, cut flowers, and summer flowers. A meeting room, party room, and catering service. Also selling fishing licences.

Buffet lunch 11 a.m. to 2.30 p.m.

OPEN

Mon-Sat 11 a.m. to 7 p.m.
Sun 12 noon to 4p.m.

www.evastupa.fi

040 1840 227

Keskustie 28, 43440 Pylkönmäki





Make
discoveries
and
donate!

RECYCLING CENTRE

The recycling centre is Saarijärvi's very own circulation centre for all kinds of stuff. We have what you'll need at home, at the summer cabin, and for your wardrobe; our selection includes clothes, shoes, home textiles, dishes, sport equipment, children's things, furniture, and small appliances. The centre also makes shop products by hand with recycled materials.

We accept clean and intact donated items. Donate your unnecessary things and we'll give them a second chance!



The Luontotupa house is connected to the recycling centre. Luontotupa is available for meetings and holds exhibits of animals, plants, and rocks from the Finnish Geological Survey!



OPEN

Mon-Tue 10 a.m. to 5 p.m.
Wed-Fri 9 a.m. to 4 p.m.
Sat 9 a.m. to 2 p.m.
Sun closed

044 4598 307

Oppitie 2, 43100 Saarijärvi





TAITOKESKUS SAARIJÄRVI

Taito shop is a house full of diverse handicrafts.

The shop includes products from Finnish handicraft entrepreneurs - including Wilawood, Hunanikkarit and Leena Aijasaho - and a diverse selection of materials. Taitokeskus offers weaving opportunities throughout the year; short courses are organised during the working season. An Art primary education handicraft school also operates at Taitokeskus; groups are organised for children and adults. Art and handicraft exhibitions are arranged at Vinttigalleria Gallery during the summer season. Taitokeskus is located in the centre of Saarijärvi on the Palavasalmi shore, in the cultural surroundings of Sofianranta. Sofianranta's culture-historically valuable area belongs to Saarijärvi cultural route's destinations.

OPEN Tue-Thu 10 a.m. to 5 p.m.
Fri 10 a.m. to 3 p.m.
summer time and in december
Tue-Fri 10 a.m. to 5 p.m.
Sat 10 a.m. to 2 p.m.

[www.taitokeskisuomi.fi/
taitokeskus-saarijarvi](http://www.taitokeskisuomi.fi/taitokeskus-saarijarvi)

050 4131 013

Paavontie 4, 43100 Saarijärvi



LAHJAPISTE

We house a flea market, a gift shop, a decoration store, and a handicraft supply store.

We also have a café and a shop for local products!

We also offer beauty salon services and massage services, ask for more!

OPEN
Mon-Fri 10 a.m. to 5 p.m.
Sat 10 a.m. to 3 p.m.

045 625 0344 myynti@lahjapiste.fi
Jukolankuja 4 A, 43100 Saarijärvi



ELÄINPALVELU ÄSA BRA

Waddle into our full-service pet store! We house a wide selection of pet foods and supplies, aquarium fish, horse supplies, and various treatment services including trimming and nail cutting. Our selection includes beautiful domestic handicrafts such as animal-themed jewellery, welcome-signs, and soap. Fresh water available for dogs in the summer at the Äsa Bar on the Ilolantie side. All pets are welcome!

OPEN
Mon-Fri 10 a.m. to 6 p.m.
Sat 11 a.m. to 2 p.m.

040 743 8784
Kauppakatu 8, 43100 Saarijärvi





PALSANPURON PAJA

Palsanpuron Paja produces Finnish handicrafts, including jewellery, knives, tools and decorations, decorations and utility items according to customer wishes.

The workshop located at Saarijärvi's Lannevesi is open whenever the smith livari Pääkkönen is there.

www.etsy.com/shop/PalsanpuroSmithy

044 9818 052

Palsankyläntie 27, 41270 Lannevesi



WILAWOOD

Products made of Saarijärvi curly birch and other Finnish woods. Wilawood makes gifts and use items with local curly birch wood and e.g. Finnish rowan and birch plywood. Our product selection includes jewellery, serving trays and cutting boards, as well as vases combining curly birch and mouth-blown glass.

wilawood.fi

wilawood@wilawood.fi

040 572 9352



LEENA AIJASALO - VOIMAVALOKUVA

Bears, birds, and landscapes – turning nature photographs into bags, pillows, posters, and post cards. Certified products made in Finland.

Also offering photography services in Saarijärvi.

Buy online!

www.voimavalokuva.fi/kauppa

050 4325 763



VANHAIN TAVARAN ERIKOISLIIKE KAIHO

A small and cosy antique shop, where you can find lamps from the 1930s-1970s, books, metal tins and other interesting items. In the backroom, there is an even smaller art shop. You can find Kaiho on Saarijärvi's cultural route at Sofianranta, in a nationally valuable cultural environment, at Paavontie 4 b 43100 Saarijärvi.

Open on Saturdays at 10 am - 2 pm, in July during weekdays at 10 am - 5 pm or upon agreement

www.facebook.com/VanhaintavarainkauppaKaiho

velituomo.kuusela@gmail.com

040 0677391

LÄHIPUOTI ELO - VISIT SAARIJÄRVI

Lähipuoti Elo, which operates in the BioPaavo facilities of JAMK, sells local entrepreneurs' products. There is also a sales point for new Saarijärvi-themed products in the same premises, as well as Visit Saarijärvi tourist information during the summer time.

Lähipuoti Elo's selection includes, e.g., honey, grain products, apple and strawberry juice, jewellery, wooden products, blacksmith works, gift products, and sweet and savoury bakery products.

The Saarijärvi product range includes t-shirt, mug, canvas bag, notebook and sticker.
Saarijärvi-illustration by Tiina Kauppinen.

The store is located in the very centre of Saarijärvi, at Paavonaukio. Welcome!



LÄHIPUOTI
Elo
BioPaavo
Visit
Saarijärvi

OPEN:
summer time 6.6. - 5.8.
Mon-Fri 12 noon to 4pm

off season:
Fri 10 am to 3 pm

You can find us at:
Kauppakatu 5, 43100 Saarijärvi



Bar & Cafe Oodi

EVENING AND NIGHT-TIME ENTERTAINMENT

BAR & CAFE OODI

Café by day, night club by night, live music. See our upcoming gigs and opening hours on [Facebook](#)!
Kauppakatu 7, 43100 Saarijärvi

KUKONHIEKAN HUVIKESKUS

Open from Mayday eve until mid-October, dancing every summer saturday.
Kukonhiekantie 35, 43100 Saarijärvi,
lisätiedot: www.kukonhiekka.com



WANHA MESTARI

Sing karaoke every day. We also offer live music, check gigs and opening hours on [Facebook](#) and [Instagram](#).
Kauppakatu 7, 43100 Saarijärvi

You can also find our opening hours on our website:
www.wanhamestari.fi/ravintolat/saarijarvi



SAHINAHON HUNAJA

Sahinaho Honey Farm has carried out apiculture and honey production since 1984.

We produce multi flower honey and speciality honey. Honey can also be purchased in your own containers during the harvest season. Our honey has also been acknowledged nationally for its quality in Finland's Best Honey competition organised by SML.

In addition to this, we raise queen bees and provide pollination services for local farmers.

0400 958 752
jormasahinaho@gmail.com



www.sahinahonhunaja.wordpress.com
Ranta-Hänniläntie 161, 43100 Saarijärvi



MANNILAN KARTANO

Mannila Manor, restored in the 1900s spirit, is a luxurious conference and event venue available to rent in Saarijärvi. The building and the surrounding yard area provide ideal settings for celebrations. From small to medium events, seats up to 60 people.

040 838 6546 (Ville)
040 527 7451 (Hannele)



www.mannilankartano.fi
Mannilantie 9 43100 Saarijärvi



PUSKIANMÄEN TILA

Puskiänmäki Farm is situated on a tall hill. Large forests surround the farm, so the location is perfect for growing and producing high-quality products.

Our products include strawberries and raspberries, fresh and frozen, fresh apple juice and strawberry juice concentrate, and honey and candles. We also produce juices by squeezing customers' own apples. Products are sold directly from our farm. Please contact us in time and reserve your strawberries and/or an appointment at the fresh juice station.

040 849 5961
terttuhakala60@gmail.com

www.puskiänmaki.fi
Pajupurontie 1370, 43100 Saarijärvi



SUMMASSAARI HONEY GARDENS AND TSASOUNA

Our honey shop also offers product presentations and tastings. High-quality and clean Finnish honey is a gift to our health!

You can also take a moment in the Summassaari Tsasouna prayer room designed by Sulo Suuntala.

OPEN every day!
Café during the summer season.

0400 340 631
Haikantie 36, 43130 Tarvaala



PAMPERING AND WELLNESS



KAUNEUS JA HYVÄOLO ZARA

Our services include cosmetological treatments, lymphatic massage, LipoLaser treatments, spray tans, and full-body treatments. Our selection includes natural cosmetics. Mon-Fri as agreed.

0400 013 804

Virastotie 2, 43100 Saarijärvi



KAUNEUSKESKUS STUDIO PMK

Our services include barber and hair-dresser services, lash extension, gel and artificial nails, lash and brow permanent colouring, make-up, and make-up sales. Barber-hairdressers:

Kati 040 7204 769

Marika 040 7193 698

Kauppakatu 6, 43100 Saarijärvi

TMI MARIKA SVAN - RELAXING ENERGY TREATMENTS, FLORAL DROPS, AND EMPOWERING PAINTINGS

Energy treatments by reiki and bodymind energy methods, reiki instruction, vibration healing in the form of floral drops, empowering vedic art paintings.

www.svan.fi, 0400 644 555

Kantolantie 63, 43100 Saarijärvi



KAUNEUSPISTE SINI ILONA

Welcome to beauty and good feelings! My services include lash extensions, CND-Creative Play gel cutting, festive and daily make-up, Vitaliberata spray tanning, traditional cosmetologist services such as facials, manicures, pedicures, hot stone massage, brow and lash permanent colouring/curling. Selling the Italian professional make-up range by Evagarden, De-nova Pro and Bielenda Professional skin treatment products, Landen Lashes magnetic lashes, and gift cards.

Kauppakatu 1, Saarijärvi, 050 5364349



KAUNEUS- JA HUSKLINIKKA JAANA

Cosmetological treatments include facials, manicures, pedicures, permanent colours, microneedling, and Bemer treatments. Hair examinations and treatments with a medical microscope, also products for sale. Eco hair dresser services on Thursdays. Open Mon-Fri (flexible hours), Sat-Sun by agreement.

www.kauneusjahiusklinikka.fi, 0400 533 767
Paavontie 24 A 19, 43100 Saarijärvi

MARKETS & OTHER SERVICES

ALKO

Mon-Thu, Sat 9 a.m. to 6 p.m., Fri 9 a.m. to 9 p.m. Torikatu 5, 43100 Saarijärvi



HALPA-HALLI

Mon-Sat 8 a.m. to 9 p.m., Sun 10 a.m. to 9 p.m. Jyväskylantie 33, Saarijärvi



K-MARKET SAARIJÄRVI

Mon-Sat 7 a.m. to 9 p.m., Sun 10 a.m. to 6 p.m. Paavontie 28, 43100 Saarijärvi



K-SUPERMARKET MINTTU

Mon-Sat 7 a.m. to 9 p.m., Sun 9 a.m. to 9 p.m. Torikatu 5, 43100 Saarijärvi

LIDL

Mon-Fri 8 a.m. to 9 p.m., Sat 8 a.m. to 7 p.m., Sun 10 a.m. to 6 p.m. Jyväskylantie 31 A, 43100 Saarijärvi



S-MARKET SAARIJÄRVI

Mon-Sat 6 a.m. to 10 p.m., Sun 9 a.m. to 10 p.m. Kauppakatu 2, Saarijärvi



TOKMANNI

Mon-Sat 8 a.m. to 8 p.m., Sun 11 a.m. to 6 p.m. Kauppakatu 5 / Mon-Fri 8 a.m. to 8 p.m., Sat 8 a.m. to 7 p.m., Sun 11 a.m. to 5 p.m. Jyväskylantie 19



FLOWERS AND SHOPPING

KÄRJEN PUUTARHA

We grow summer flowers in greenhouses from seeds and cuttings from March onwards. Our selection also includes various hanging baskets, potted plants, herb and vegetable seedlings. As well as composts and supplies. Come and enjoy a spring excursion at Linna. See and experience the miracle of growth and the splendour of colours.

Welcome to shop at your local garden from the beginning of May.

www.karjenpuutarha.fi

0400 858 330 / 040 7075 534

Summakoskentie 170, 43100 Saarijärvi

SAARIJÄRVEN KUKKAKULMA

Floral binds including bouquets, installations, funeral wreaths, and room decorations. In addition to cut and pot flowers, we also sell gifts and small decorative items.

Mon-Fri 9 a.m. to 5 p.m., Sat 9 a.m. to 2 p.m., summer Sundays 10 a.m. to 1 p.m.

www.saarijarvenkukkakulma.fi

014 421 570

Virastotie 2, 43100 Saarijärvi

FLEA MARKETS

LAHJAPISTEEN KIRPPUTORI

Mon-Fri 10 a.m. to 5 p.m.

Sat 10 a.m. to 3 p.m.

045 6250 344

Jukolankuja 4 A, 43100 Saarijärvi

SAARIJÄRVEN KIERRÄTYSKESKUS

Mon-Tue 9 a.m. to 5 p.m.

Wed-Fri 9 a.m. to 4 p.m.

Sat klo 9 a.m. to 2 p.m.

044 4598307, Oppitie 2, 43100 Saarijärvi

SHOPPING

KELLOLIKE PORRI

In our selection jewellery, watches, corporate presents.

Mon-Fri 10 a.m. to 5 p.m.

014 421202

Kauppakatu 6, 43100 Saarijärvi

KENKÄ-PUU

Footwear, bags and purses.

Mon-Thu 10 a.m. to 5 p.m., Fri 10 a.m. to 6 p.m., Sat 9 a.m. to 2 p.m.

014 471 434

Jyväskylätie 36, 43100 Saarijärvi

OPTICIAN

INSTRUMENTARIUM

Mon-Wed 9 a.m. to 5 p.m.,

Thu-Sun closed.

020 332 846

SILMÄASEMA SAARIJÄRVI

Mon-Fri 10 a.m. to 5.30 p.m.

020 7122 218,

Kauppakatu 2, 43100 Saarijärvi

GOOD TO KNOW



SAARIJÄRVI PHARMACY

Mon-Fri 9 a.m. to 9 p.m. (During summer season Mon-Fri 9 a.m. to 6 p.m.), Sat 9 a.m. to 2 p.m., Sun 11 a.m. to 2 p.m.
Kauppakatu 2, 43100 Saarijärvi.
Next to the S-Market.

SAARIJÄRVI HEALTH STATION

Saarijärvi health station

First aid weekdays 8 a.m. to 6 p.m., weekends and holidays 8 a.m. to 3 p.m. During other times, closest first aid is available in Jyväskylä.

044 4598 500 Sairaalan tie 2, 43100 Saarijärvi



Jyväskylä health station

When the Saarijärvi health station is closed, please call the number 116 117 for an evaluation and follow the instructions you receive. Keskussairaalan tie 19, 40620 Jyväskylä

In case of emergency call 112

POSTAL SERVICE

In the same building as the K-Supermarket Minttu. Mon-Sat 7 a.m. to 9 p.m., Sun 9 a.m. to 9 p.m.

Torikatu 5, 43100 Saarijärvi

TAXI TRAFFIC

SAARIJÄRVI TAXI STATION

0100 86 644, Ilolantie 10, 43100 Saarijärvi

BUS STATION

Check bus schedules at

www.matkahuolto.fi

Torikatu 6, 43100 Saarijärvi

CLOSEST RAILWAY STATION

JYVÄSKYLÄ RAILWAY STATION

Hannikaisenkatu 20, 40100 Jyväskylä

Distance to Saarijärvi some 65 kilometres.

CLOSEST AIRPORT

TIKKAKOSKI AIRPORT

Lentoasemantie 70, 41160 Tikkakoski

Distance to Saarijärvi some 45 kilometres.

CAR REPAIR SERVICES



AD JUHAN AUTOHUOLTO

All repairs and services, Vianor-partnered tyre sales, 24/7 carwash. Cars and vans, trailers, boat trailers, ski boxes, and party tents for rent.

Open weekdays 8 a.m. to 4.30 p.m.
014 423 090

Jyväskylän tie 31, 43100 Saarijärvi



SAARIJÄRVEN AUTOPALVELU OY

Flexible spare parts and repair service, available also on weekends as needed.
014 3333 777

Jyväskylän tie 34, 43100 Saarijärvi

SAARIJÄRVEN AUTOTARVIKE OY

A wide selection of solutions for your car: service, repairs, spare parts, supplies, chemicals, and paints.

010 2812 880

Open weekdays 7.30 a.m. to 4.30 p.m.
Sara-ahontie 15, 43100 Saarijärvi



TKR-AUTOKORJAAMO AUTOASI SAARIJÄRVI

Affordable repair shop offering a full range of services and repair shop facilities for all makes and models. Euro-master tyre sales. We offer substitute cars for rent while you wait for repairs.

0400 649 292 / 050 5555 670

Open weekdays 8 a.m. to 4.30 p.m.
Kunniavuorentie 5, 43100 Saarijärvi

PETROL STATIONS



CAFÉ & RESTAURANT LINNAN LIISA

Summer season Mon-Thu 8 a.m. to 6 p.m., Fri 8 a.m. to 7 p.m., Sat-Sun 10 a.m. to 7 p.m., winter season Mon-Fri 8 a.m. to 6 p.m., Sat-Sun 11 a.m. to 6 p.m.

040 5210 978



SEO RANTA-KIVI

Summer season Mon-Sat 9 a.m. to 8 p.m., Sun 10 a.m. to 8 p.m., winter season Mon-Fri 7 a.m. to 6 p.m., Sat 9 a.m. to 6 p.m., Sun 11 a.m. to 6 p.m.

014 3333 777

Jyväskylän tie 34, 43100 Saarijärvi







TOURISM SERVICES IN THE TOWN CENTER

The items are listed in the guide's presentation order and are marked on the map on the previous spread according to the colour codes.

YLEISET PALVELUT

- 1 Post office
- 2 Taxi stand
- 3 Bus station
- + Health center
- i Tourist information

CULTURE DESTINATIONS

- 1 Saarijärvi museum, Toivi Järvinen art home
- 2 Stone Age Village
- 3 Gentry home museum & Runeberg exhibition
- 4 Tapper family Juhola House
- 5 Herala artist residence
- 6 Veijari Activity Park
- 7 Kappelilampi Summer Café
- 8 Saarijärvi church
- 9 Atelier Leijonatorni
- 10 Summassaari honey gardens and Tsasouna

NATURE DESTINATIONS

- 11 Julmat Lammit
- 12 Haikankärki
- 2 Ancient and Nature Paths

THINGS TO DO

- 13 Paavonrinteet ja Kusiaismäki Ski Center
- 14 Swimming hall - Fitness centre Aarresaari
- 15 Liikelataamo
- 16 Disc golf Kusiaismäki
- 17 Disc golf Summassaari
- 18 Disc golf Ahvenlampi
- 19 Kukonhiekka entertainment centre
- 20 Training Center Gym
- 21 Autiolahti beach volley
- 17 Summassaari training stairs
- 22 Ice-hole swimming
- 14 Air gun range / Swimming hall

- 21 Autiolahti beach
- 23 Mansikkaniemi beach
- 24 Runeberg's Prk
- 25 Equipment rental,
Saarijärvi library

ACCOMMODATION

- 27 Ahvenlampi Camping
- 29 Apartment 28
- 30 Kultaranta Mansion

DINING

- 31 Frisee
- 32 Saarijärven Ruustinna
- 33 HH Keittiö
- 34 Karhun Kattila
- 35 SEO Ranta-Kivi
- 36 Saarijärven Pizzeria Kebab &
Restaurant Isabella
- 37 Prarichat
- 37 Mado Burger
- 38 Papa's Pizzeria
- 40 Äijäsen Kotileipomo Oy

SHOPPING AND SERVICES

- 41 Recycling centre
- i 42 Taitokeskus Saarijärvi

- 43 Lahjapiste
- 44 Eläinpalvelu Æsa Bra
- 45 Bar & Cafe Oodi
- 19 Kukonhiekka entertainment
centre
- 38 Wanha Mestari
- 46 Kauneus- ja Hiusklinikka Jaana
- 47 Kauneus ja HyväOlo Zara
- 48 Kauneuskeskus Studio PMK
- 49 Kauneuspiste Sini Ilona
- 50 Alko
- 33 Halpa Halli
- 51 K-Market Saarijärvi
- 50 K-Supermarket Minttu
- 52 Lidl
- 53 S-Market Saarijärvi
- 38 Tokmanni, keskusta
- 54 Tokmanni, Jyväskylätie
- 46 Kukkatuulia ja Saarijärven
Hautauspalvelu
- 47 Saarijärven Kukkakulma
- 39 Kelloliike Porri
- 55 Kenkä-Puu
- 56 Instrumentarium
- 53 Silmäasema
- 53 Saarijärven Apteekki
- 57 AD Juhan Autohuolto
- 35 Saarijärven Autopalvelu Oy
- 58 Saarijärven Autotarvike Oy
- 59 TKR Autokorjaamo



Saarijärvi

See page 57 for more information.



Campfire place



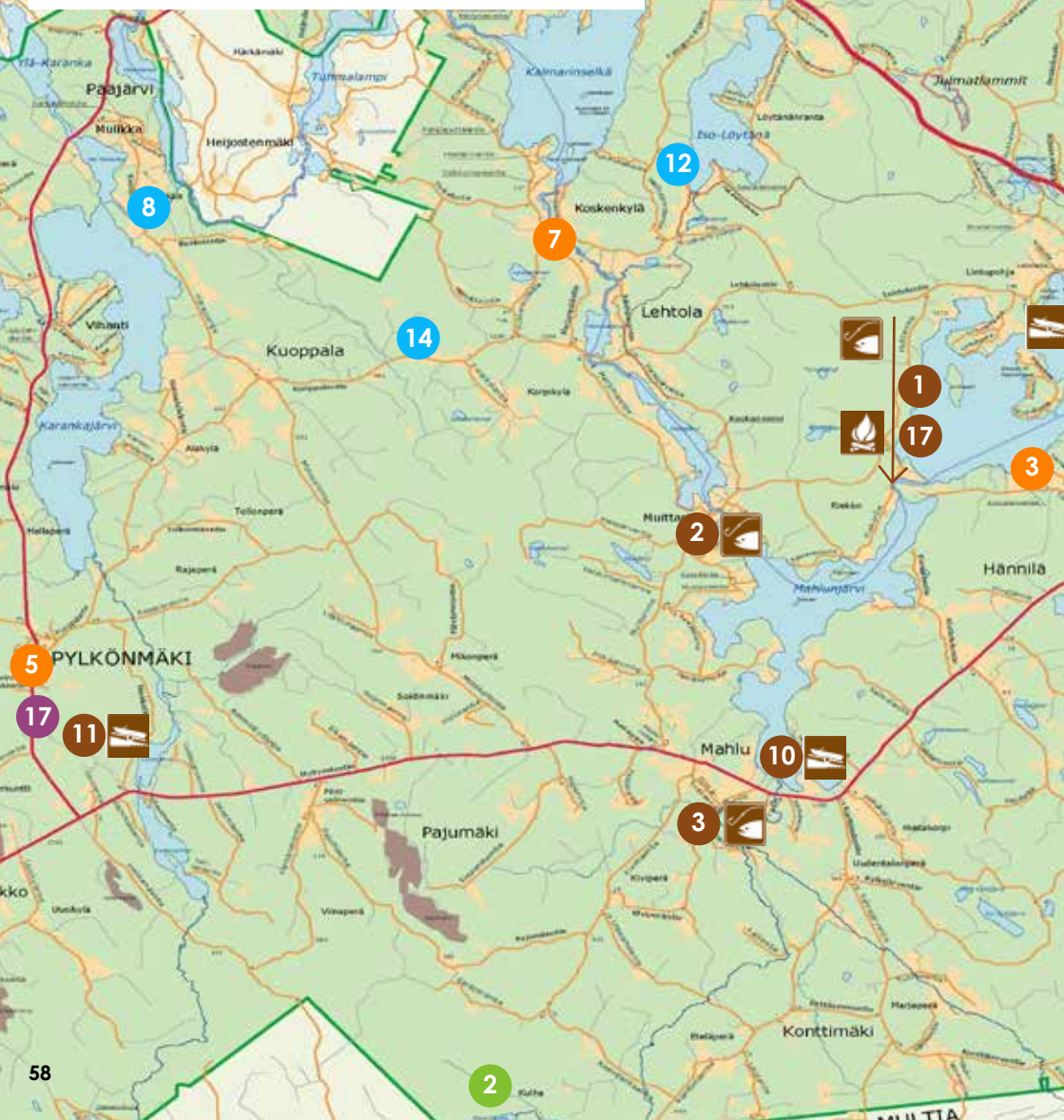
Lean-to / hut

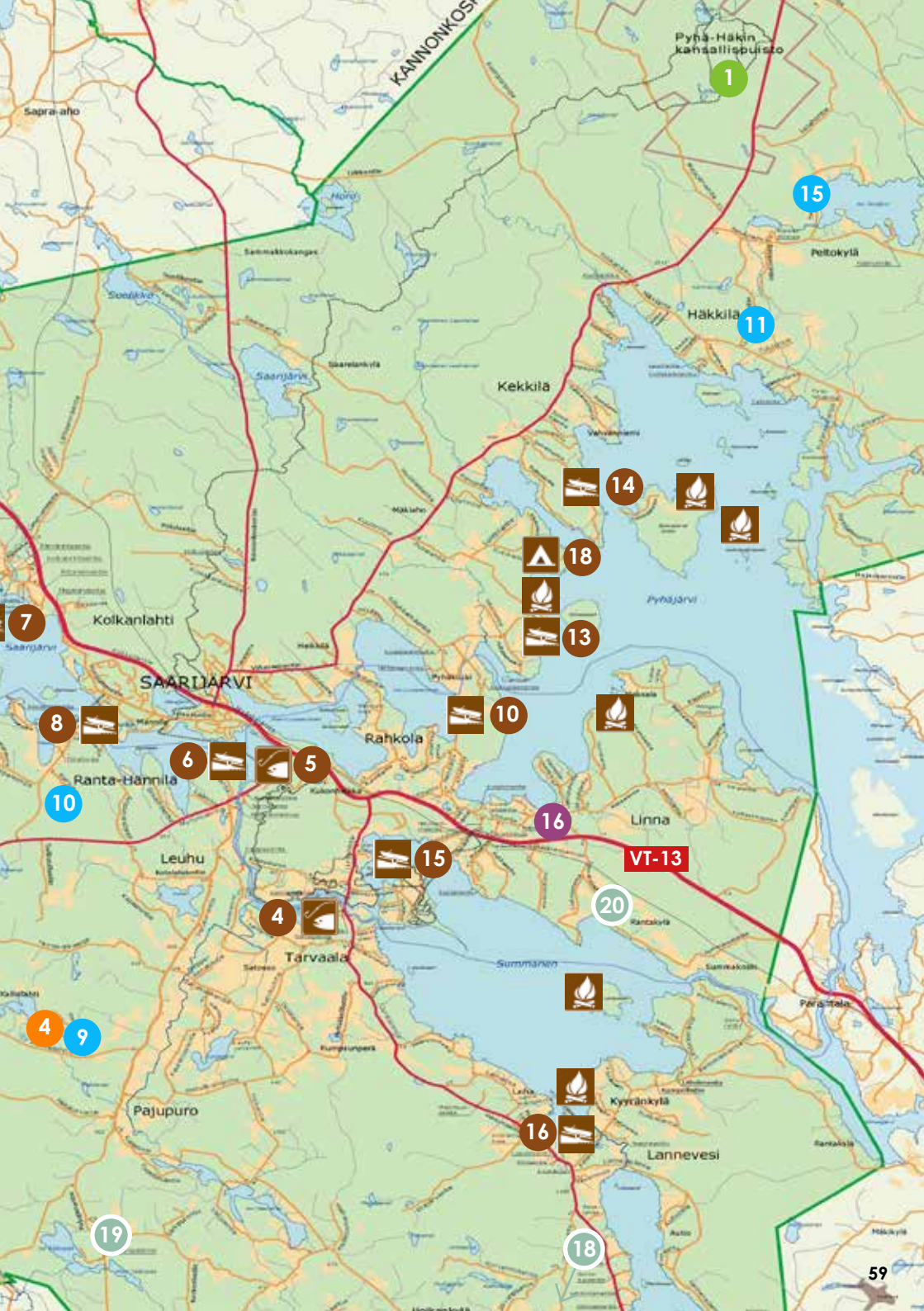


Boat launch location



Fishery







TOURISM SERVICES OUTSIDE THE TOWN CENTER

The items are listed in the guide's presentation order and are marked on the map on the previous spread according to the colour codes.

NATURE DESTINATIONS

- 1 Pyhä-Häkki National Park
- 2 Kulhanvuori ja Syväojarrotko

THINGS TO DO

- 3 Finnish Yoga Institute
- 4 Horseback Riding, Purola Farm
- 5 Disc golf Pylkönmäki
- 6 Disc golf Kalmari
- 7 Roppilax tourist farm

ACCOMMODATION

- 8 Jakolan Tila
- 9 Purola Farm
- 10 Farm House Hepoharju
- 11 Koskela Farm
- 12 Lomakoivulehto
- 13 Lamminkangas
- 14 Lauttamäki Traditional Farm
- 15 Kultaranta-log cabin

DINING

- 16 Café & Restaurant Linnan Liisa
- 17 Evästupa

SHOPPING AND SERVICES

- 18 Palsanpuron Paja
- 19 Tmi Marika Svan - Relaxing energy treatments, floral drops and empowering paintings
- 20 Kärjen Puutarha Tmi



See more local services
by scanning the QR code!
saarijarvi.yrityshakemistot.fi

FISHING JA BOAT LAUNCH LOCATIONS HUTS AND CAMPFIRE LOCATIONS



RAPID FISHING LOCATIONS

- 1 Riekonkoski**
Riekontie 138
43250 Kolkanlahti
- 2 Muittarinkoski**
Muittarintie 574
43250 Kolkanlahti
- 3 Konttijoki-Kotajoki**
Silmäkoskentie 90
43220 Mahlu
- 4 Majakoski**
Kallinjärventie 2
43130 Tarvaala
- 5 Recreational fishing destination Pajulampi**
Parking lot
Hyppyrimäentie 1
43100 Saarijärvi
To ice
Asutustie 8
43100 Saarijärvi
To water
Hyppyrimäentie 1
43100 Saarijärvi



HUTS AND CAMPFIRE LOCATIONS

- 17 Lean-to and campfire place**
Riekontie 138
43250 Kolkanlahti
- 18 Hut**
Saunajaakontie 43
43100 Saarijärvi

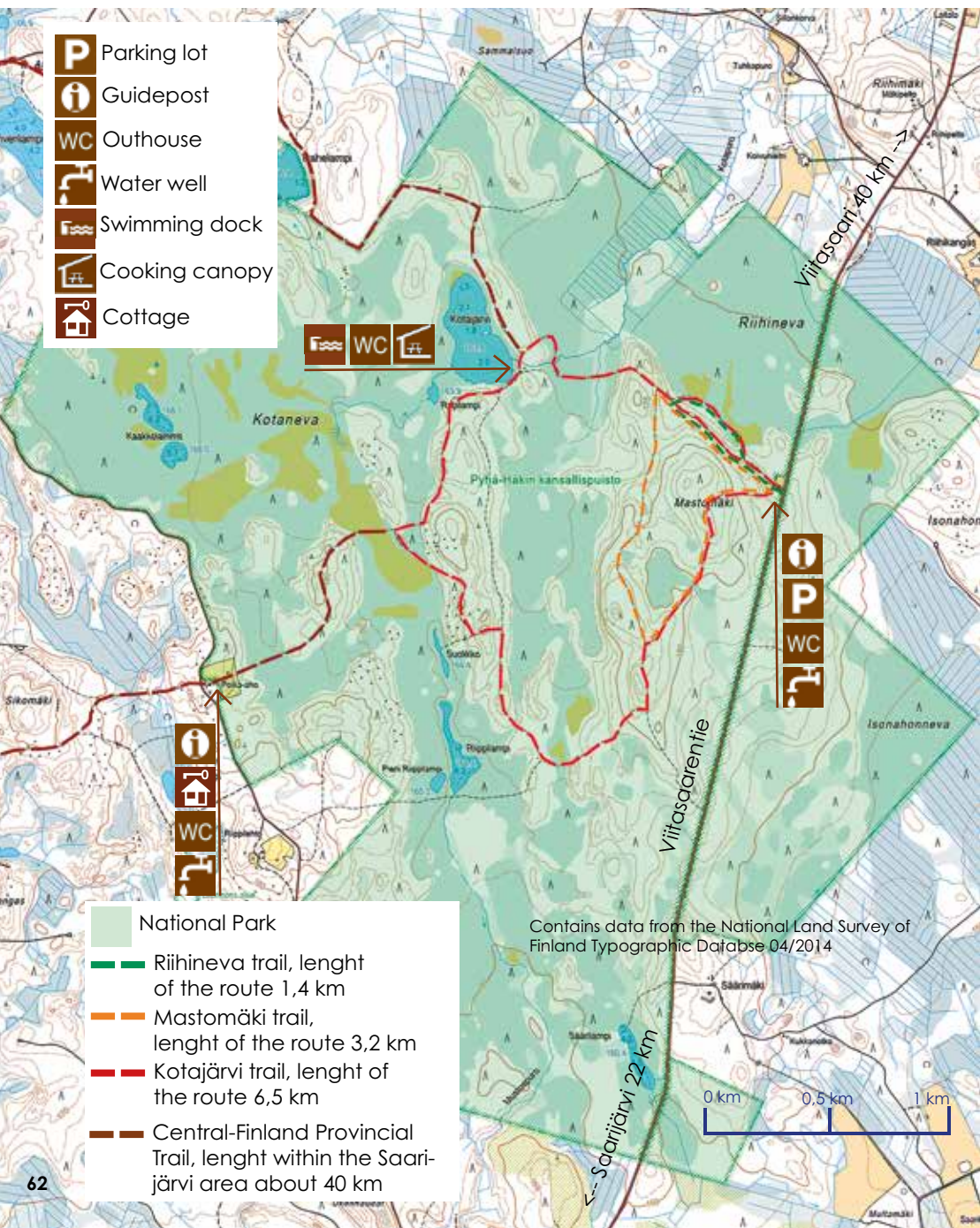


BOAT LAUNCH LOCATIONS

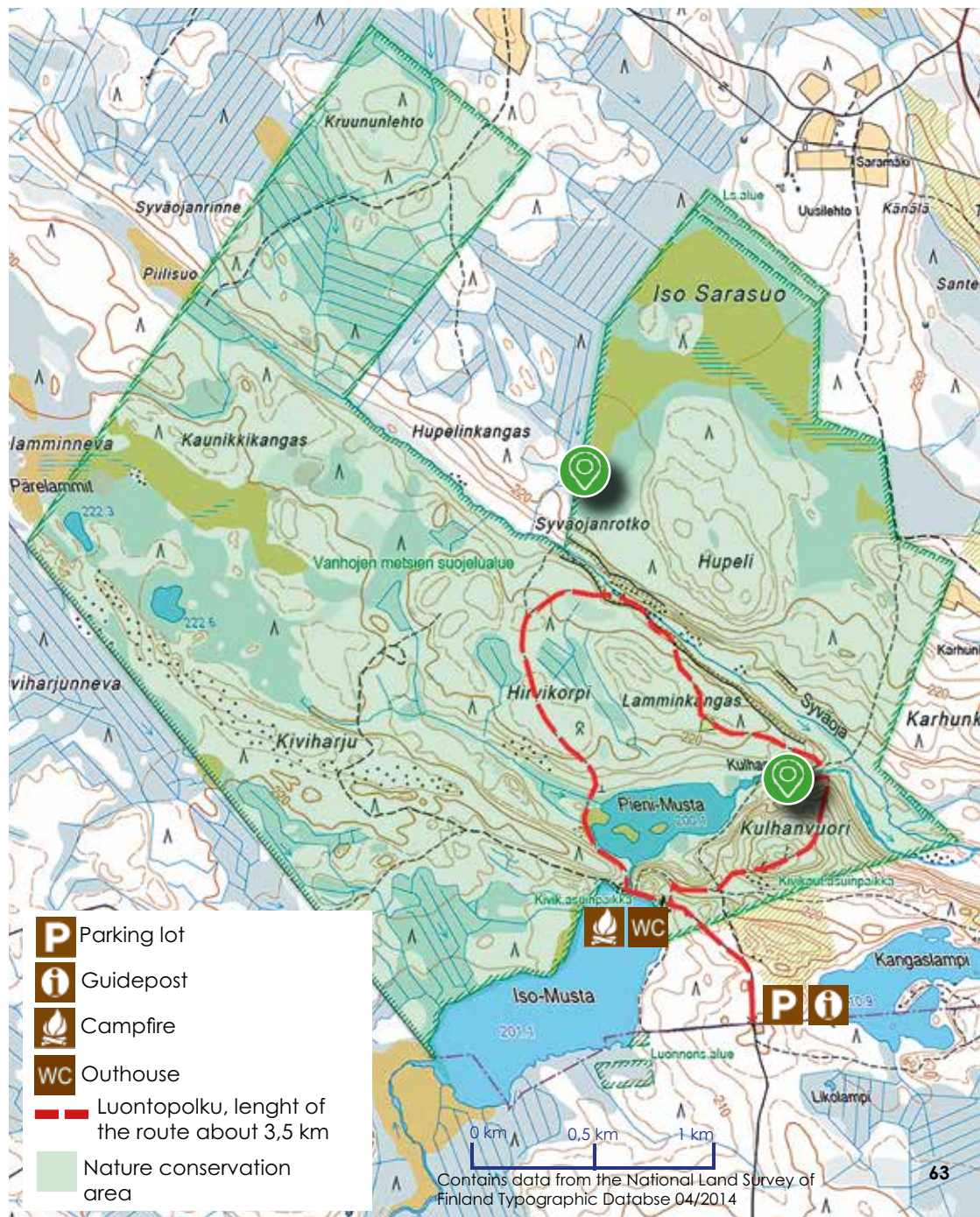
- 6 Myllymäentie 1**
43100 Saarijärvi
- 7 Kannonkoskentie 8**
43100 Saarijärvi
- 8 Ranta-Hänniläntie 9**
43100 Saarijärvi
- 9 Lehtolantie 56**
43250 Kolkanlahti
- 10 Mahlunjärvi**
Myllymäentie 1266
43220 Mahlu
- 11 Luotonen Sammalinen**
Myllymäentie 2388
43440 Pylkönmäki
- 12 Iso-Lumpero**
Pyhäkoskentie 215
43100 Saarijärvi
- 13 Pyhäjärvi**
Saunajaakontie 43
43100 Saarijärvi
- 14 Pyhäjärvi**
Iisniementie 241
43100 Saarijärvi
- 15 Summasjärvi**
Summassaarentie 43
43130 Tarvaala
- 16 Summasjärvi, sahanranta**
Kiimasjärventie 51
41270 Lannevesi



PYHÄ-HÄKKI NATIONAL PARK



KULHANVUORI AND SYVÄOJANROTKO



Parking lot



Guidepost



Campfire



Outhouse



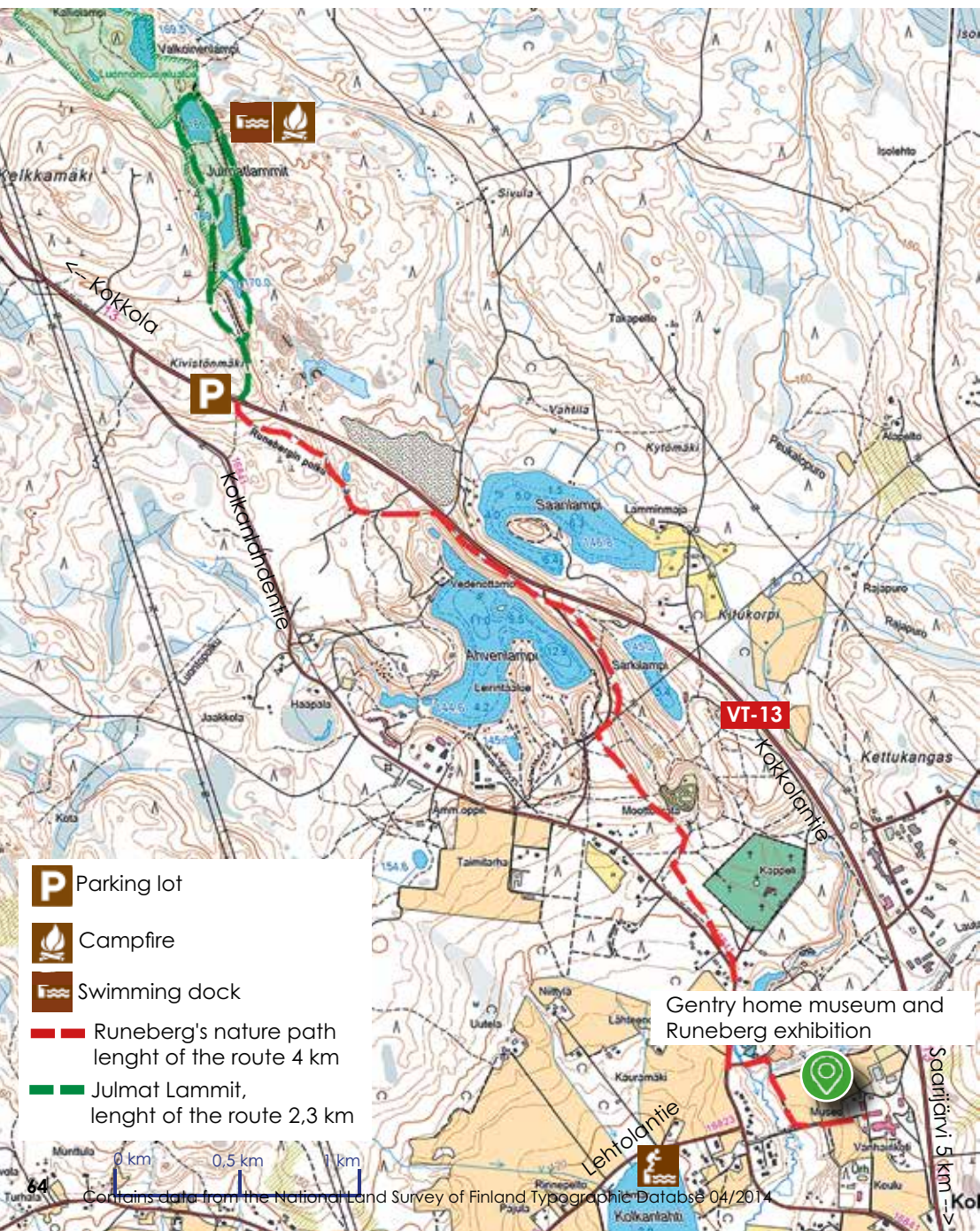
Luontopolku, length of the route about 3,5 km



Nature conservation area

Contains data from the National Land Survey of Finland Typographic Database 04/2014

JULMAT LAMMIT, RUNEBERG'S NATURE PATH



HAIKANKÄRKI, ANCIENT NATURE PATHS





INTERESTED IN SAARIJÄRVI?

The City of Saarijärvi has plenty of plots on offer for those looking to build their own house. Our naturally beautiful lake landscapes offer pleasant surroundings for the whole family! There are housing plots in the city centre, in the vibrant villages, and at the housing area zoned by the shore of the Summasjärvi lake.

The City of Saarijärvi has opened a new and pleasant district for small houses on the **Timonmäki esker** right by the city centre. The district is well-connected to both the services in the centre and the specialist shops by the highway. The engineering design for the district, situated by the lake, was started in the summer of 2020.

One of the most appealing housing areas is in **Kotiniemi** by the shore of lake Summasjärvi. The area features building plots with private beaches in a peaceful rural landscape. The sizeable plots, some with private beaches, are located next to good traffic connections five kilometres from the city centre. Our diverse services are close by, as are several recreational trails.



Could Saarijärvi be your future home? Take a look at our new resident's info package at kotiinmeille.fi

Learn more about vacant building plots: www.saarijarvi.fi/vapaat-asuintontit
044 4598 314 / head of land use OR 044 4598 406 / secretary of planning

ENTREPRENEURS WELCOME TO SAARIJÄRVI!

We will help you develop your business!



Whether you need advice on new ideas, investments, agribusiness, business trades, ownership changes, customer acquisition, internationalisation, or new partnerships.

We will advise you with all business-related issues all the way from the start! Don't hesitate to get in touch!

Director of Business Development Jyrki Rahkonen, 040 581 5964,
jyrki.rahkonen@saarijarvi.fi

Business Advisor Harri Uusisalo, 044 459 8452, harri.uusisalo@saarijarvi.fi

www.saarijarvenyrityspalvelut.fi

SSYP Kiinteistöt Oy maintains and contracts commercial and business properties in the city centre and nearby areas.



KIINTEISTÖT
Saarijärvi

Free commercial properties available at
www.ssypkiinteistot.fi/vapaat-tilat

Executive Officer Olavi Nolte, 044 4598 294, olavi.nolte@ssypkiinteistot.fi

INDUSTRIAL AND COMMERCIAL PLOTS IN THE CITY OF SAARIJÄRVI

Saarijärvi business plots include good options for both small operators and heavy industries. Plots are available for rent and sale. The plots are mainly situated in two areas by highway 13 in Kolkanlahti and Linnankylä, some seven kilometres from the centre of Saarijärvi. There are individual plots available closer to town.



TOURIST INFORMATION



You can ask for more details and pick up brochures at the tourist information centres.

TAITOKESKUS SAARIJÄRVI

050 4131 013 / Paavontie 4

SAARIJÄRVI TOWN HALL

Sivulantie 11 (closed 6th June - 5th August)

BIOPAAVO

Kauppakatu 5 (open 6th June - 5th August)

SAARIJÄRVI TOURISM GUIDE DISTRIBUTION POINTS:

- Saarijärvi Town Hall, Sivulantie 11
- Taitokeskus Saarijärvi, Paavontie 4
- SEO Ranta-Kivi, Jyväskylän tie 34
- Kahvila-Ravintola Linnan Liisa, Jyväskylän tie 705



Visit Saarijärvi

TOURISM SERVICES AT SAARIJÄRVI
Sivulantie 11 / PL 13, 43100 Saarijärvi
travel@saarijarvi.fi

www.visitsaarijarvi.fi



@visitsaarijarvi



TAG YOURSELF
TO SAARIJÄRVI
#annahetkenviedä
#visitsaarijärvi
#saarijärvi