



# Visit Saarijärvi

Get carried away  
in the moment.



SAARIJÄRVI REGION  
TOURISM GUIDE

# Fall in love with Saarijärvi

Saarijärvi is a beautiful and lively city in northern Central Finland, only 45 minutes from Jyväskylä by car. We are known for our lakes, waterfront houses, and peaceful and beautiful nature. When you look closer, you will see that there is a whole lot of culture, exercise opportunities, jobs, and education on offer here. Could it be that this idyllic parish is also home to an institute of higher education? It is true, all of it.

This brochure will help you find meaningful destinations in our city, public and private services, and activities for the whole year.

I would like to highlight the traditional Kirmot week summer event, which offers a broad range of various performers. There are also theatre performances and a number of music and culture events.

Other cultural destinations worth visiting are the Saarijärvi museum, art gallery Ahku, and the atelier Ateljee Leijonantorni. This summer is also full of bark, as a dog show for all breeds takes of the Biotalouskampus campus in July.

The favourite destination for children is the activity park Veijari, offering plenty to do and see for the whole family. If you are looking for something a little more peaceful, I can recommend the Pyhä-Häkki national park. The Julmat lammet ponds, Haikankärki headland, and Kulhanvuori highlands allow you to experience the best of Central Finnish nature all year around. Our various ski trails and the Paavonrinteet slopes provide faster wintertime activities.

You will find more things to do in this guide and event calendar, the city website, and the Visit Saarijärvi website.

Many of us have fallen in love in Saarijärvi – and with Saarijärvi. Why not you too.

*Satu Autiosalo*  
Mayor





## CULTURE

Museum  
Stone-Age  
Village  
Exhibitions  
Destinations

PAGES 6-17



## ACCOMMODATION



Hotels  
Country Houses  
Cottages  
Camping

PAGES 36-41



## THING TO DO



Activities  
Sport Facilities  
Equipment  
Rental

PAGES 22-35



## DINING



Restaurants  
Cafes

PAGES 42-45



## SHOPPING & SERVICES

Shopping  
Gas Stations  
Night Life  
Tourist Information  
Services Catalogue

PAGES 46-53



## NATURE DESTINATIONS

National Park  
Hiking / Camping  
Nature Trails  
Canoeing and  
Rapid Trails

PAGES 18-21



## MAPS & INFO

Downtown  
Tarvaala  
Town Map  
Nature Dest.

PAGES 54-65





The area was formed into  
Palvasalmi Chapel Congregation.

1628

The name Saarijärvi became  
established.

1690

1639

Palvasalmi became an  
independent congregation

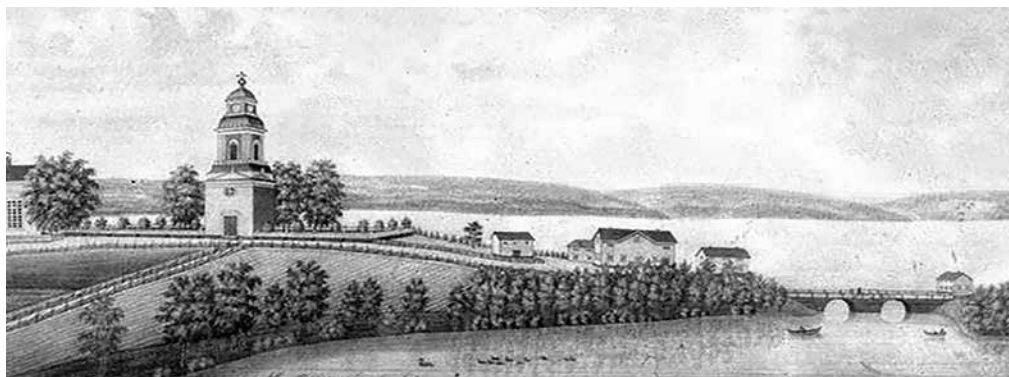
1823

Finnish National Poet J. L. Runeberg  
lived in Saarijärvi in 1823-1825.

# SAARIJÄRVI - from a bark bread parish to a lively city

**Saarijärvi is among the oldest settlements in Finland** – a settlement over 10,000 years old has been discovered in Selänpäänjoki of Pylkönmäki. Slightly more recent settlements have been found in Eerola of Kalmari and at the northern end of lake Summasjärvi. A unique hunting pit trap system has been discovered in the region, which indicates a highly organised community.

This community spirit has lasted throughout the millennia, as the folk of Saarijärvi are a close-knit and warm community even today.



Our national poet Johan Ludvig Runeberg lived in Saarijärvi during the years 1823-1825. Here the young poet encountered a new and fascinating environment, which experience was later distilled into fine poetry. **Farmer Paavo** was Runeberg's first significant poem about a Finnish-speaking man of the people. It was published in Runeberg's first collection in 1830.



Farmer Paavo even has his own monument in Saarijärvi; the bronze Paavo statue by **Heikki Varja** was christened in 1961 in the church park.

Some of the nature that was around in Runeberg's time has remained in an almost untouched state in the present-day Julmat Lammit nature conservation area. Runeberg was an avid hunter who would roam these majestic pond landscapes in search of game, which hunting trips have been described in his Saarijärvi article. The area can be explored by hiking along the Runeberg trail.



**Read the poem Farmer Paavo via the QR code!**



1866 The Municipality of Saarijärvi was established.

1866

1867

Tarvaala Agricultural Education School was established.

1986 Saarijärvi became a town.

1986

2016

Saarijärvi celebrated its 150 years as a municipality, 30 years as a town anniversary.



Saarijärvi



**Present-day Saarijärvi** is a beautiful, appealing, and healthy environment in which to grow – it is a city full of entrepreneurs, expertise, and culture in northern Central Finland.

One of our best parts is the wonderful down town area, which has been constructed on an islet in the middle of three lakes: the Saarijärvi, Lumperoinen, and Herajärvi lakes. Here, you can live by a lake and in the middle of a city at the same time!

In addition to wonderful landscapes, Saarijärvi offers its inhabitants, summer guests, and other visitors a wealth of culture services and recreational opportunities.

Our most significant cultural destinations include the **stone age village**, showcasing the oldest known human settlement in Finland, **Juhola**, which is the childhood home of the talented Tapper family, and the **Saarijärvi museum**, offering cultural history and art exhibitions all year around.

There are several interesting natural historic hiking and skiing destinations in Saarijärvi: the **Pyhä-Häkki national park**, the **Kulha nature conservation area**, and the **Julmat Lammit ponds**.

You are welcome to enjoy the beautiful nature, waterways, and culture of the Saarijärvi culture parish – in the heart of Finland!





The museum and its surroundings also serve as locations for all-family events.

# THE SAARIJÄRVI MUSEUM

**The renewed Saarijärvi museum is full of culture and artistic experiences.**

The museum arranges exhibits and documents, preserves, and researches local knowledge for future generations. The museum efforts started in the 1950s by the Saarijärvi-Seura association provided the foundations for the professional Saarijärvi city museum established in 1986. Locals and travellers have been able to enjoy temporary exhibits for over three decades in the museum main building, which was opened three years later. The main building was renovated and expanded in 2019.

## **Tapper Art Society jubilee year 2023**

The Art Society was established in 1993 to preserve the life's work of Aino, Vihtori, Marko, Harri, Kain, and Yrjö Tapper. The Saarijärvi-based society supports art and research into art and creativity, and works in many other ways too to promote artistic endeavours. The jubilee year showcases the art, life, and particular attitude, known as "tapperism", of the Tapper family. During the jubilee year, tapperism is exhibited by means of a multi-creative series of events, taking place over all four seasons.

Read more about the jubilee here: [www.saarijarvi.fi/tapper](http://www.saarijarvi.fi/tapper)



Kain Tapper sculpting the work *Surumarssi* (Funeral March) in Juhola in the early 1960s. On the right, Hannes Autere in his Pajupuro studio.

## EXHIBIT SCHEDULE FOR 2023

### Kain Tapper and Hannes Autere 18.5.–30.12.2023

According to Kain Tapper's (1930–2004) brother, author Harri Tapper, Kain had two role models: his mother Aino and the sculptor Hannes Autere (1888–1967) of Saarijärvi. Autere, the father of central Finnish visual arts, and Tapper, the reformer of Finnish sculpture, meet at a Saarijärvi museum exhibit.

### Bronze, wood, and coal. Sculptures and sketches by Juha Menna at the Tapper Juhola Galleria Jarska 17.6.–20.8.2023

Academy member Kain Tapper's student, the sculptor Juha Menna (b. 1970 in Orimattila) living and working in Rajamäki, has been invited to the summer exhibit at Galleria Jarska. His main techniques are drawing, bronze, and wood.

The museum exhibits and events are supported by the Friends of the Saarijärvi museum association.

The exhibits are part of the Tapper Art Society's 30th anniversary jubilee 2023. The programme is supported by the Central Finland fund of the Finnish Cultural Foundation and the Ministry of Education and Culture.

#### OPEN

1.2.-18.6. Wed-Sun 12 noon to 5 p.m.  
21.6.-27.8. Wed-Sun 12 noon to 6 p.m.  
30.8.-30.12. Wed-Sun 12 noon to 5 p.m.

#### PRICES

adults 9 €  
children (4-12) 4,50 €  
group of adults 4,50 €  
(minimum 10 person)

[www.saarijarvi.fi/museo](http://www.saarijarvi.fi/museo)

044 459 8413  
044 459 8268

Herajärventie 2,  
43100 Saarijärvi





# MUSEUM YARD



Main attractions free of charge!

## THE TRADITIONAL PLANT GARDEN

lets you see the best of perennials! The garden, established in 1995 by the Saarijärvi Friends of Nature, is home to such traditional plants as redleaf rose, mountain cornflower, horse-radish, and many others. The purpose of the garden is to act as a local plant genome bank.

## THE SCULPTURE PARK

presenting sculptures by artists living and born in Saarijärvi. Including works by e.g. Kain Tapper, Frans Toikkanen, Hannes Autere, Arvo Siikamäki, and Harald Karstén. Exhibits on the yard of the museum can be viewed independently.

## THE SHORE MEADOW

looks after the adorable little Veräjääho farm lambs living in the area in the summer.

## THE MUSEUM CAFÉ

is extended out to the terrace in the summer. The café shop offers local knowledge, art publications, and timeless gifts.

# OTHER MUSEUM DESTINATIONS



## TAPPER FAMILY HOUSE JUHOLA AND GALLERY JARSKA

The childhood and youth home of the Tapper artist brothers. Galleria Jarska carries and art exhibit in the summer, and there is a guided cross-country trail around Juhola, associated with important locations relating to the works by the brothers.

### OPEN

17.6.-20.8.

Sat-Sun 12 noon to 4 p.m.

The destination is open to groups by order in the spring and autumn seasons.

### PRICES

adults (15-) 8,00 €

children (4-14) 4,00 €

pensioners 4,00€

[www.saarijarvi.fi/museo](http://www.saarijarvi.fi/museo)

044 459 8413

044 459 8268

Ryöppäläntie 59  
43130 Saarijärvi



## TOIVI JÄRVINEN ARTIST RESIDENCE

The art home by the Saarijärvi museum includes not only a fully decorated interior, but also a collection of Finnish art collected by Toivi and Osmo Järvinen.



## HERALA ARTIST RESIDENCE

Herala exhibits paintings by the Saarijärvi-based artist Aune Herala, as well as several works by famous Saarijärvi folks and other Finnish artists.

Tours and guides for groups available on order via the Saarijärvi Museum.  
044 459 8413 / 044 459 8268

Heräjärventie 2, 43100 Saarijärvi

Tours and guides for groups available on order via the Saarijärvi Museum.  
040 847 9421 / 040 096 7731

Heralantie 3, 43100 Saarijärvi



# STONE-AGE VILLAGE

**Come and experience the village in the beautiful Summassaari island, featuring a number of stone age dwellings!**

The first inhabitants arrived 9,000 years ago, and the most recent prehistorical find is an iron spearhead from a thousand years ago. Several digs have been completed here, and the found dwellings have been reconstructed accordingly.

The stone age village turns this past age into a life-sized village, allowing you to experience the stone age lifestyle, living conditions, items, and tools. The area features the Summanen village, a trap and ancient path, and the Yläkylä village based on archaeological research, which showcases stone age dwellings. The most recent destinations is built around the impact crater found in the nearby Summasjärvi lake.







## STONE-AGE VILLAGE FOR CHILDREN

The buildings and tools in the village are built on a scale suitable for children. In their own village, children can get to know stone age life independently – including everything from hunting to housing!

The dig site for children showcases research methods for prehistorical times and allows them to try their hand at being an archaeologist. Children can grind stones, decorate comb ceramic containers, fish with katiska fish traps, and hunt by using traps. If the hunt goes well, they can start fires using a fire drill and cook a meal using comb ceramic wares and tools.

## SUMMER ACTIVITIES FOR THE WHOLE FAMILY

Activity sessions are held in the village in the summer, looking into stone age handicrafts with various materials. The themes change every week, featuring for example the making of bark bread, fishing nets, fires, birch tar, bows, or ropes by ancient methods. You can make a small stone age souvenir to take with you, using for instance bark, stone, antler, or leather.

See the schedules and programmes at [www.saarijarvi.fi/kivikauden-kyla](http://www.saarijarvi.fi/kivikauden-kyla)

OPEN  
9.6.–30.7.2023  
Wed-Sun 11 a.m. to 5 p.m.

PRICES  
family ticket 33,00 €  
(max. 5 people)  
adults 10,00 €  
children (4–12) 7,00 €

050 350 1422  
Kivikirveentie 10 a  
43130 Tarvaala





## Saarijärven kulttuuriraitti



The culture trail, put together by the **Friends of the Saarijärvi museum, the Saarijärvi museum, and the city of Saarijärvi**, delves into the history of Saarijärvi village and the local cultural heritage through a number of destinations along the Paavontie road. Just over two kilometres long, the trail ends at Saarijärvi museum, where the cultural heritage of Saarijärvi has been recorded, researched, and exhibited for almost 40 years.

The culture trail starts at the beginning of Paavontie road, at the Tarvaala vicarage near Palvasalmi strait, in the house originally built for the chaplain in 1689. The trail follows the current Paavontie road all the way to Saarijärvi museum. You can also follow the trail from the museum to the Tarvaala vicarage, as information boards along the route provide details of the destinations and a brochure is available for navigation.

More information:

**[visitsaarijarvi.fi/kulttuuriraitti](https://visitsaarijarvi.fi/kulttuuriraitti)**



**Paper versions of the brochure are available in the following locations in the centre of Saarijärvi:**

- Saarijärven Ruustinna
- Vanhaintavarainliike Kaiho
- Taitokeskus Saarijärvi
- S-Market Saarijärvi
- Saarijärven kierrätyskeskus
- Saarijärven museo



Open the  
PDF-brochure

# CULTURE TOUR

Saarijärvi city centre buildings, cultural landscapes, sculptures, and monuments

## SCULPTURES AND MEMORIAL

- 1 Museum sculpture park  
Herajärventie 2
- 2 Irene Mendelin's memorial plaque  
Paavontie 50
- 3 Memorial for those gone to the Winter and Continuation wars Koulukeskus,  
Sivulantie 6
- 4 Karahka and Poem, Lukiontie
- 5 Saarijärvi shore  
Uimahalli (inside), Sivulantie 6
- 6 Ankara laulu / Sanan säilät & Alkava  
Sivulantie 11
- 7 Huuto vedestä Lukion puisto
- 8 Surumarssi  
Läntinen hautausmaa, Paavontie 18
- 9 Alkuvoima Paavonaukio, Kauppakatu 5
- 10 The church area  
Paavontie 8
  - Paavo' statue
  - Veteran's pillar
  - 1918 memorial
  - Memorial for the Karelian dead
  - Memorial for previous Saarijärvi churches
  - Memorial for those who died in the Civil War
  - Hammarén's grave statue
  - Grave of Hannes Autere
  - Native spirit hero statue
  - Salmilainens' memorial

- 11 Matthias Calonius  
memorial monument  
Paavontie 1

- 12 Arc de Triomphe  
Myllymäentie

## BUILDINGS AND CULTURAL LANDSCAPE

- 13 Säästölä Ilolantie 6
- 14 Saarijärven tsasouna  
Matosalmentie 1
- 20 Community hall Oppitie 1  
Gallery Ahku Oppitie 2
- 8 Western cemetery  
Paavontie 18
- 15 Härkämänty Paavontie 21
- 16 Old common school  
Karhumäentie 11
- 17 Päiväkumpu former day-  
care centre Einarintie 3
- 18 Youth centre Paavontie 13
- 19 Saarijärvi church  
Paavontie 8
- 10 Soldier's graveyard,  
The old cemetery  
Paavontie 8
- 11 Tarvaala clergy house  
Paavontie 1







Open every day  
as of 5th of June  
to 26th of August,  
even on  
Midsummer.

## VEIJARI ACTIVITY PARK

Spend a relaxing summer day with  
the family in a park close to nature!

Veijari is a combination of activities, animals, and beautiful nature. The park offers adventures on land and in water. It features for example an Adventure trail, football billiards, large bouncy castles, and pedal cars. You can go on water in a canoe, boat, or raft, and nothing is better on a hot day than swimming.



There are ponies, alpacas, pigs, chickens, and many other animals in the animal yard. The reptile house is home to more exotic friends, such as snakes and lizards. The furry nest is home to rabbits and rodents. The fish oasis lets you see what kinds of fish are swimming under the water in Finnish lakes. Pony walks and quad bike rides are available twice a day.

You can bring your own food or enjoy the offering of the Food court. The Kappelilampi summer café serves ice cream and refreshments from 11:00 to 18:00.

The Veijari activity park has much to see and do for one day. If you buy a day pass, you are welcome to visit the park the following day as well for the same price!



0400 621 663  
Puistotie 1  
43250 Kolkanlahti

SEE PRICES AND ADDITIONAL  
DETAILS ONLINE  
[www.puuhapuistoveijari.fi](http://www.puuhapuistoveijari.fi)



**There is plenty to see at Saarijärvi in the summer – whether you are into music, sports, theatre, art, lectures, or even festivals!**



Take a look at our summer programme:  
[www.visitsaarijarvi.fi/saarijarvenkesa](http://www.visitsaarijarvi.fi/saarijarvenkesa)





# SAARIJÄRVI CHURCH

## A church in the middle of town!

The Saarijärvi parish was established in 1628. The current church was built in 1846 to 1849, and it is the third church to be built on the same spot. The previous churches were built in 1628 and 1649.

The church is a masterpiece of 19th century design and construction with an 18-meter-wide cupola dominating the main hall. Such a sizeable cupola would normally require a stone frame, so to find one in a wooden church is counted among the notable achievements of Finnish architecture in the 19th century.

You can also visit the church by making an appointment with church official Pia Rantala. Prayer hours can be arranged in conjunction with your visit; please inquire within the church registry office.

**While your there, do also visit the Pylkönmäki church designed by Jaakko Kuorikoski in 1864 and renovated by Alvar Aalto in 1926. Keskustie 40, 43440 Pylkönmäki**



church official Pia Rantala 040 8246 825  
church registry office 040 1534 736

A church guide is on location in the summer, see  
more details at [www.saarijarvenseurakunta.fi](http://www.saarijarvenseurakunta.fi)

Paavontie 8  
43100 Saarijärvi







## ATELIER LEIJONATORNI

Atelier Leijonatorni provides artistic pleasures and a romantic atmosphere by the Lumperoinen lake under the guidance of a tour guide.

The atelier exhibits works by Jouko Hackzell over the years. Most of the paintings are on sale, and you can also commission your own work.

### OPEN

Mon-Fri 10 a.m. to 5 p.m.  
Sat-Sun noon to 3 p.m.

0400 820 423

Rahkolantie 49 B  
43100 Saarijärvi

<https://hackzell.vuodatus.net>



## ART GALLERY AHKU

The art gallery established by Saarijärven museon ystävät ry Association in the summer of 2021 is located in a historical building, in the centre of Saarijärvi, which the Paavonseutu Co-op previously used. The name of the gallery, Ahku, comes from Central Finland's northern dialect word, which means passion, will and desire.

In addition to temporary exhibitions, the gallery also sells art and auxiliary products.



The former building of the Paavonseutu Co-op  
Oppitie 2 / Paavontie 30, 43100 Saarijärvi  
[samunystavat.fi/ahku](http://samunystavat.fi/ahku)

Ahku  
GALLERIA

Art gallery at  
Saarijärvi



# PYHÄ-HÄKKI NATIONAL PARK

Enter the wild to find peace, go hiking in an unique environment!

Pyhä-Häkki lets you experience the wind in pine trees that are hundreds of years old, the song of the flowing water in brooks, and the scent of the bog. The Riihineva trail (1.4 km) and the Mastomäki trail (3.5 km) are particularly suited for families with children. The most popular route, the Kotajärvi trail (6.5 km), runs around the entire park from wild woods to duckboards. The Tulijärvi trail (17 km) is best for those looking for a longer hike. All routes have been marked on site with dedicated colour symbols.

There is a cooking shelter by Kotajärvi with a masonry fireplace and a separate fire pit. You can get drinking water from the well at the information centre.

The national park allows temporary camping, which is recommended at the Tulijärvi shelter situated very close to the park. The Poika-aho cabin houses sheep herder vacationers in the summer, and in the spring and autumn the cabin is available for single night rentals.

**Guided hikes and other services are available from the national park partners, see more details at [www.luontoon.fi/pyha-hakki/palvelut/yhteistyotahot](http://www.luontoon.fi/pyha-hakki/palvelut/yhteistyotahot)**



**See a video about the destination!**

Take a look at the map p. 62

Metsähallitus customer service: 020 6395 270,  
Mon-Fri 9 a.m. to 3 p.m.

[www.luontoon.fi/pyha-hakki](http://www.luontoon.fi/pyha-hakki)

Viitasaarentie 2119  
43170 Häkkilä





## KULHANVUORI AND SYVÄOJANROTKO

A peaceful day-trip destination  
for those looking for eskers and  
gulches.

Experience one of the tallest points in Central Finland, the Kulhanvuori hill rising 260 meters above sea level, in the Kulha nature conservation area. Trail length is about 3.5 kilometres.



Go hiking in the mysterious Syväojanrotko gulch, which is a canyon about one kilometre long. Its vertical cliff faces rise up to the treetops. The ice on the cliffs melts as late as in the summer, as the sun only shines on the northeastern wall of the canyon.

There is a fire pit in the area with firewood readily available.



**See a video  
about the  
destination!**

Take a look at  
the map p. 63

Metsähallitus customer  
service: 020 6395 270.  
Mon-Fri 9 a.m. to 3 p.m.

[www.luontoon.fi/kulhanvuori](http://www.luontoon.fi/kulhanvuori)

Konttimäentie 1100  
43220 Mahlu





## JULMAT LAMMIT

See the canyon ponds, steep cliffs, and dark woods where young Runeberg went wandering and writing his poetry! There is a trail less than 3 kilometres long that goes around the pond area with a fire pit and a scenic outlook. There are three ponds by the trail which is part of the 12-kilometre **Runeberg nature trail**. The trail is marked with blue posts.

Julmat Lammit is a nature conservation area where you get to see the effects of the ice age on the rocks and soil and the formation of the terrain.



See a video  
about the  
destination!

Kokkolantie 886  
43250 Kolkanlahti

Take a look at  
the map p. 64



## THE SEVEN LAKES CANOE ROUTE

Enjoy no fewer than seven lakes on one trip going around the canoe route surrounding the centre of Saarijärvi city. There are several rest areas and over-night cabins along the route.

The tour includes the lakes **Saarijärvi, Kallinjärvi, Summasjärvi, Kiimasjärvi, Pyhäjärvi, Iso- ja Pieni-Lumperoinen**.

Take a  
laid-back  
canoe trip!

Equipment rentals by  
**Saarijärven Latu**, see page 35

Get more details and a map via the QR code!





## HAIKANKÄRKI

A trip to Haikankärki in Summassaari shows you how stunning the Saarijärvi landscape can get! You will travel along the top of a tall esker among pine trees and lakes on both sides. The lake comes nearer and nearer as you approach the end of the trail. Stop at the fire pit to enjoy your lunch and the view! Trail length is about 15 kilometres

Kivikirveentie 10  
43130 Tarvaala  
Take a look at the  
map p. 65



## SAARIJÄRVI RAPID ROUTE

Wild rapids, calm rivers, beautiful lakes, and a Saarijärvi cultural landscape. All of this is provided by the easily traversed 82 kilometres long landscape route **Kyyjärvi-Karstula-Pylkönmäki-Saarijärvi**.

You will go down 22 rapids totalling some 7 kilometres on this longest interconnect-ed rapid route in all of Southern Finland.

Get more details and  
a map via the QR code!



## ANCIENT NATURE PATHS

**The ancient path** is a trail approximately 2 kilometres long, along which different destinations are presented and pre-his-toric themes expounded on by using in-formation boards. The guided boards by **the nature trail** showcase animals and plants in the area, tell you about con-servation, and give tips on how to make environmentally friendly choices.

Kivikirveentie 10 a  
43130 Tarvaala  
Take a look at the  
map p. 65



## CENTRAL FINLAND TRAIL

The trail lets you go cross-country skiing and hiking from Saarijärvi to Kannonkoski through the Pyhä-Häkki national park. The trail includes up to 40 kilometres of ski and hiking trails in the winter.

**The trail begins in the centre of Saarijärvi city at the address Lähdekuja 2.**

Inquire at recreati-onal  
services  
044 4598 298





# ANY LUCK IN FISHING?

Catch the best  
tips for fishing  
and all you need  
to know about  
permits!

Saarijärvi allows fishing on several bountiful lakes such as the clear Pyhäjärvi, on several rapids, and on the Pajulampi pond by the city centre.

You do not need to be a professional to try your luck, just hook a worm and give it a go. Dawn and dusk are the best times for fishing, as this is the time when the small fish come out of hiding to hunt for insects. When the small fish get going, the bigger and more valuable fish do too, so this is the time when you can catch the best fish. What could be more exciting than tiring a silver-sided trout in the dusk of a summer night!

## FISHING LICENCES

**Akun Radio**  
**LAKE, CRAYFISH, RAPID, AND SEASONAL LICENCES VARIOUS FISHING EQUIPMENT**  
Nahkurintie 4, 43100 Saarijärvi  
0400 497 119

**SEO Ranta-Kivi**  
**ALL LICENCES**  
Jyväskylän tie 34, 43100 Saarijärvi  
014 3333 777

[www.kalakortti.com](http://www.kalakortti.com)  
**RAPID LICENCES, FISHING AREA LICENCES**





# FISHING SPOTS IN SAARIJÄRVI

## KONTIJOKI - KOTAJOKI, RAPID FISHING

The fishing area is expansive, as the rapids are over ten kilometres long combined. The destination is at its best in early summer and autumn, because there might not be much water in the rapids in the middle of summer. Silmäkoskentie 19, 43100 Saarijärvi

## MAJAKOSKI, RAPID FISHING

Stocked species in the rapid are zander and trout. Natural species include perch, grayling, and pike. Casting and fly fishing are allowed. There is a shelter and a fire pit in the area.

Kallinjärventie 2, 43130 Tarvaala

## MUITTARINKOSKI - RIEKONKOSKI, RAPID FISHING

The rapids are about 5 kilometres from each other, the Muittarinkoski rapid runs into the Mahlunjärvi lake and the Riekonkoski rapid runs into the Saarijärvi lake. There is a shelter and a fire pit at Riekonkoski. **Riekonkoski**, Riekontie 138, 43250 Kolkanlahti. **Muittarinkoski**, Muittarintie 570, 43240 Lehtola

## PAJULAMPI, RECREATIONAL FISHING DESTINATION

This licence-based recreational fishing destination is maintained by the Saarijärvi Association. The pond is stocked with rainbow trout and whitefish. If you want to fish from a boat, you can rent one at Ranta-Kivi at the address Jyväskyläntie 34. Hyppyrimäentie 5, 43100 Saarijärvi, 014 3333 777.

## TIPS

Worm fishing is especially amusing for the children in the family. It is very exciting when the float sinks beneath the water and the rod bends in the hands of the small angler. Did I get a perch or maybe even a rainbow trout? Rent a boat and try your luck at e.g. the Pajulampi pond by the city centre.

Hear the roar of water and experience something unforgettable with rapid fishing! You may even see a white-throated dipper observing you as you fish. You can purchase a casting and trolling licence that covers the areas of several fishing associations.

Get your licence, make some lunch and go fishing!



The contact details for all associations can be found at the address

[www.saarijarvenosakaskunta.net](http://www.saarijarvenosakaskunta.net)

[www.saarijarvenreitinkalatalousalue.fi](http://www.saarijarvenreitinkalatalousalue.fi)

See more details and a licence price list on the Saarijärven Osakaskunta website.

[www.saarijarvenosakaskunta.net](http://www.saarijarvenosakaskunta.net)

A map and more details about boat landing spots can be seen on pages 58-59.



# PAAVONRINTEET

Downhill skiing and snowboarding less than four kilometres from the city centre!



Paavonrinteet offers five illuminated slopes for downhill skiers, varying in length from 70 meters to 750 meters. There is a street and rails for snowboarders on the third slope.

There are two lifts in the area, the children's lift being free of charge. Children below six can go skiing for free on the big slope, if accompanied by an adult and wearing a helmet!

There is a ski rental service that will provide you with all the equipment you need for skiing and snowboarding.



Café Keko offers coffee services and ticket sales. There is also a sledding hill in the area!



## LIFT PASSES

adults / children 6 to 12

1 h 15 € / 10 €

2 h 18 € / 14 €

3 h 23 € / 18 €

day rent 28 € / 22 €

## EQUIPMENT RENTALS

1h 10 €

2 h 13 €

3 h 18 €

day rental 25 €

## OPEN

Tue-Fri 3 p.m. to 7 p.m.

Sat-Sun 11 a.m. to 6 p.m.

Mon closed

## DURING HIGH SEASON

Opening hours

announced on

Facebook.

[www.saarijarvi.fi/paavonrinteet](http://www.saarijarvi.fi/paavonrinteet)

044 4598 982 /  
ski rental



You can find us on the **ski.fi** website as well



Right next  
to the Paa-  
vonrinteet  
slopes!

## KUSIAISMÄKI SKI CENTRE

Competitions, fitness skiing, and beginner trails!

Ski trails running in varied terrain provide good conditions for competitive and fitness skiing. There are beginner and recreational trails too.

Easy illuminated 1, 2, and 3 km trails for fitness skiers and a 1.5 km trail around the Pajulampi pond. 3, 5, and 8 km trails for experienced competitive skiers.

The Kusiaismäki ski centre also includes K-10, K-26, and K-44 ski jumping ramps, the latter two being available in the summer too.

Other services include a waxing shelter, a testing slope, a break hut by the start/finish line, and a service building with a toilet.



There is a disc golf course available in the summer.

The ski trails are also suitable for jogging.

Don't overlook the bountiful berry and mushroom grounds in the area!



[www.saarijarvi.fi/hiihda](http://www.saarijarvi.fi/hiihda)

044 4598 295/  
vapaa-aikatoimi

Hyppymäentie 1  
43100 Saarijärvi





## SWIMMING HALL - FITNESS CENTRE AARRESAARI

Come spend a refreshing day with the whole family. Aarresaari lets you relax, work on your fitness, or get a nice massage!

A 25-meter fitness pool with four tracks and low jumping podiums is good for fitness swimming and aquajogging. Aquajogging belts are available at the swimming hall.

You can relax in the therapy pool with water massage spots and a whirlpool rest area. There is additionally a whirlpool bath and a cold water pool in the hall. A sauna and a steam sauna are available for relaxing and warming up after swimming.

There is 36-meter waterslide and a children's pool for kids and those of a youthful disposition, where the deepest point is one meter deep.

Guided water-based exercise on almost every day of the week! See all groups and additional details at the address [www.saarijarvi.fi/sisalto/ohjatut-ryhmat](http://www.saarijarvi.fi/sisalto/ohjatut-ryhmat)



### OPEN

Mon 1 p.m. to 8.30 p.m.  
Tue 7 a.m. to 9 a.m./ 12 noon to 8.30 p.m.  
Wed 12 noon to 8.30 p.m.  
Thu 7 a.m. to 9 a.m./ 12 noon to 8.30 p.m.  
Fri 12 noon to 8.30 p.m.  
Sat 12 noon to 5.30 p.m.  
closed on Sundays and during midsummer

### PRICES

adults 6,50 €  
children, students 4,40 €  
pensioners 4,90 €  
family ticket (max. 5) 20 €

044 4598 275 /  
control room  
044 4598 278 /  
cafe



## GYMS

Whether you want to run on a treadmill, punch a bag, or work on your abs, gyms provide you with everything you need for a complete workout!

In addition to the broad selection of TechnoGym equipment upstairs, there is a free-weight room downstairs for the heavy lifters! Set what ever weights you want on all equipment. When the Aarresaari centre is closed in the summer, you can buy gym cards at the café Frisee at the address Kauppakatu 1, 43100 Saarijärvi.



### OPEN

Mon	1 p.m. to 8.30 p.m.
Tue-Fri	7 a.m. to 8.30 p.m.
Sat	12 noon to 5.30 p.m.
Sun	closed

### PRICES

adults	5 €
children, students	3 €
pensioners	4,50 €

[www.saarijarvi.fi/uimahalli](http://www.saarijarvi.fi/uimahalli)

Sivulantie 6  
43100 Saarijärvi



Access with charge card on Sundays  
and midsummers between 6 a.m. and 11 p.m.!



# LIIKELATAAMO

A bowling alley and gym under one roof!

Make a  
reservation  
online!

Liikelataamo provides enjoyment in the form of bowling, glow bowling, exercising, hanging around, playing golf or other games in a relaxed environment with good music!

The atmosphere there is unique, and the service at the restaurant (full alcohol license) no worse than excellent. You are welcome to have a good time, Liikelataamo is open for everyone! You can also have unforgettable celebrations here, including birthdays or refresher events!

Spend a nice night with sauna bathing, darts, golf, and bowling. Our well-equipped gym lets you enjoy movement or train with a purpose – whatever your own level may be. Don't forget our individual and small group coaching!



Check our event calendar on the website and find Stand Up events or other events for everyone.

## OPEN

Mon-Sun, see our opening hours on our website.

## PRICES

bowling	from 20€ / h / lane
glow bowling	24€ / h / lane
shoe rentals	1,5 € / pair

[www.liikelataamo.fi](http://www.liikelataamo.fi)

050 3398 747

Rentontie 7  
43100 Saarijärvi







An  
educational  
institute in the  
middle of  
Finland at its  
most  
beautiful!

# FINNISH YOGA INSTITUTE

Come and enjoy yoga in the nature!

Owned by the Finnish Yoga Federation, the Yoga Institute has been providing yoga courses since 1973.

Enjoy yoga in a homely environment in the middle of nature. Calm and peaceful surroundings provide the best conditions for getting into yoga.

The Institute offers member courses throughout the year, and even for beginners. The courses focus on different yoga themes. The courses last for a weekend or up to a whole week. The teachers are experienced and meritorious yoga teachers from all over Finland. The training of yoga teachers is also centred on the Yoga Institute.

## LOCAL FOODS AND SMOKE SAUNAS

The courses offer delicious and diverse vegetarian dishes, including fully vegan ones, using as much locally sourced and grown foods as possible.

There are warm dishes as well as salads on offer.

In the summer, the course participants get to enjoy a smoke sauna and a private beach.

There are plenty of opportunities for outdoor activities during your free time; you could for example hike to the Riekkonkoski rapid.

**Check out the introduction offers for the 50th anniversary of the yoga institution.**



Register for  
the courses in  
advance!

All courses are available at  
[www.joogaliitto.fi/kurssikalenteri](http://www.joogaliitto.fi/kurssikalenteri)

[www.joogaliitto.fi](http://www.joogaliitto.fi)

014 421 670

Taipaleentie 122  
43100 Saarijärvi



Get in  
touch and let's  
plan the right  
horseback riding  
experience for  
you!

## HORSEBACK RIDING AT THE PUROLA FARM

Come and experience the  
unique countryside calm on  
horseback!

Purola Farm offers accommodations as  
well as various riding experiences for veter-  
ans and complete newcomers alike.

### TWO-HOUR CROSS-COUNTRY RIDE 63 €

A two-hour tölt or gallop trail where the  
speed is adjusted according to the expe-  
rience level of the riders. Takes place on al-  
ternating forest paths and motor roads. For  
2 to 6 persons.

The two-hour trail for beginners includes an  
hour of getting to know your horse, learning  
horsemanship and the basics of riding, and  
then a one-hour riding trip across varying  
terrain. For 3 to 5 persons.



### HALF-DAY TRIP 94 €

For riders who know the basics of riding and  
can control their horse during gallop, a speed-  
ier trip across forest paths and small motor  
roads. Trip lunch and open fire coffee served  
at a goahti shelter along the way. Approx-  
imately three hours of riding, total trip duration  
about four and a half hours. For 4 to 6 persons.

We offer 1 to 2 day hiking trips, gait riding les-  
sons on a field, and longer camps, weekends,  
courses, and trainings. Yin yoga is our camp  
novelty. The Purola Farm stable is a member of  
the Finnish Riders' Federation and the Finnish  
Icelandic Horse Association, and a winner of  
the Finnish Trail Riding Association's Priimatalli  
certificate.

### DETAILS AND RESERVATIONS

040 5121 432 /  
Pipsa Wagner

[www.purolafarm.fi](http://www.purolafarm.fi)

Kekkosentie 491  
43100 Saarijärvi





## DISC GOLFING!

Saarijärvi is home to several free disc golf courses. The required equipment can be rented on a library card at the Saarijärvi library; read more on page 35.

### KUSIAISMÄKI

A national championship level course about 5 km long. In addition to the 20 holes on the course, there are two practice spots available. The course is very hilly with varying elevations.

**Hyppyräimäentie 1-2, 43100 Saarijärvi**

### PYLKÖNMÄKI

9 holes along a 1.6 kilometre course. The terrain is rolling with some elevation differences. Suitable for both beginners and experienced players. Equipment available for rent at Keskustie 28, 43440 Pylkönmäki

**Rahikaisentie, 43440 Pylkönmäki**

### SUMMASSAARI

A 9-hole course in hilly terrain.

**Summassaarentie 180, 43100 Saarijärvi**

### KALMARI

The 10-hole Nahjus course at Kalmari has been built close to a village house alongside a cross-country jogging trail.

**Nahjuksenraitti 12, 43270 Kalmari**

### AHVENLAMPI

A 19-hole course in an easily traversed heath forest.

**Ahvenlammentie 62, 43250 Kolkanlahti**



An enjoyable  
activity for  
the whole  
family!





## KUKONHIEKKA ENTERTAINMENT CENTRE

Kukonhiekka is one of Finland's most popular summer dance venues, located on the shore of Pieni Lumpperoinen lake by the Saarijärvi city centre.

Dances are arranged there on Saturdays from Mayday eve until mid-October with top Finnish artists. Full alcohol licence, three bars, café, grill, karaoke, two terraces with a view. Electrical sockets for 6 vehicles and a toilet/shower for overnight guests.

**Check opening hours and performers on our website.**  
**Party catering services also available!**



[www.kukonhiekka.com](http://www.kukonhiekka.com)  
040 5402 086

Kukonhiekantie 35  
43100 Saarijärvi

Summer  
dances every  
Saturday!



## KAYAKING AND RAFTING EXPERIENCE

Would you like to improve the morale of your employees on a canoe trip in beautiful surroundings? Or take your clients on a whitewater rafting experience? How about getting the gang together for a nice trip?

Participation does not require any previous experience, and you will learn paddling on lakes and in streams and whitewater rapids during the trip. We offer two-person Indian canoes and a rubber boat if needed.

The best times will be between 12.6. and 7.7. The water level will then be perfect for good fun, and the weather sunny and warm. If you wish, you can bathe in a dugout sauna and enjoy open fire salmon and pit cooked roast after the trip.

Koskeen Oy  
[www.koskenlaskuretki.fi](http://www.koskenlaskuretki.fi)  
[hannu.strengell@koskeen.fi](mailto:hannu.strengell@koskeen.fi)

Hannu Strengell  
Canoe guide  
0400 541 766

Bring your  
clients along on  
a nature trip and  
teach them how  
to go down  
a rapid!



## ARI'S HIKING AND ADVENTURE SERVICE

Services include rapid rafting on rubber rafts in the summer, canoeing and kayaking on the Saarijärvi rapid route, and natural rock climbing!

Winter services include snowshoe safaris, ice climbing, snow sculpting, and snow building.

Also bachelor/bachelorette parties, massages, and Kalevala limb corrections

Guide Ari Toikkanen  
040 7336 885

Experiences  
and adventures  
in Finnish  
nature!



## FISHING GUIDE SERVICES TEEMU NIEMINEN

Come and experience the excellent fishing waters of Saarijärvi's route and enjoy the beautiful landscapes of Central Finland. The services include fishing guide services and wilderness dining for both private individuals and companies and foreign tourists. For groups of 1-4 people fly fishing and trolling in the summer.

In the winter, ice fishing and bait fishing excursions are organised.

Fishing guide services  
Teemu Nieminen  
040 3536601

   
@t3mppa\_fishing

Fishing guide  
services in  
beautiful  
landscapes.

# PLENTY TO DO

## EXERCISE

### AUTIOLAHDEN BEACH VOLLEY

A quality beach volley court right next to the Autiolahti beach. Mäntytiie 4, 43100 Saarijärvi

### SUMMASSAARI TRAINING STAIRS

Training stairs with 155 steps, completed in the summer of 2018. The stairs are located near Haikankärki.

Summassaarentie 180, 43130 Tarvaala

## PLAYGROUND

### RUNEBERGINPUISTO PARK

The park includes a playground for children and exercise equipment for the elderly.

Mittarinpohku 1, 43100 Saarijärvi

## FOR DAREDEVILS

### ICE SWIMMING

The winter swimming spot and sauna at Sofianranta beach is open from October to March, Tuesdays and Fridays at 16:00 to 21:00. Winter swimming without the sauna is available on other days as well. Season fee or one-time fee. More information at the sauna or from Erja Hiironen at 0500 641 877. erja.hiironen@gmail.com.

Provided by Saarijärven latu / [www.saarijarvenlatu.fi](http://www.saarijarvenlatu.fi).  
Paavontie 4, 43100 Saarijärvi

### GO-KARTING

The varied outdoor karting track at Saarijärvi's Kolkanlahti is open on Thursdays and Sundays at 6 p.m. to 9 p.m., rental equipment available on Thursdays. Inquire at 040 700 4123 / Kari Kirijatshenko

### AIR GUN RANGE AT THE SWIMMING HALL

A 10-person air gun range for rifles/pistols and two game targets. Supervised evenings in the winter on Mondays and Thursdays at 6 p.m. to 8 p.m. Details at Saarijärven Ampujat ry / Mauri Kempainen 040 1686 486

Sivulantie 6, 43100 Saarijärvi

## BEACHES

### AUTIOLAHTI

A small pier and dressing booths on the beach. Swings, a small slide, and a sandbox for children.

Mäntytiie 4, 43100 Saarijärvi

### MANSIKKANIEMI

Dressing booths and pier with a jump tower, platform heights 1, 3, and 5 meters. Swings and a small slide for children.

Mansikkaniementie 26, 43100 Saarijärvi







## RENTAL EQUIPMENT

It's nice to try new things when on holiday. How would you like tennis, or maybe snowshoe hiking?

### KAYAKS, CANOES, SUB BOARDS, SNOWSHOES, TOURING SKATES AND HIKING SUPPLIES

Saarijärven Latu rents canoes and kayaks with all necessary safety equipment (life vests, paddles, backup paddle for rapids, kayak covers, watertight barrels, rapid helmets, and canoe trailers). The association also rents out some snowshoes, touring skates, and other hiking supplies.

**Longboat rowing on Tuesday evenings in the summer, free of charge. 150 € for groups, available on order. Inquire at 040 8356 191 / 040 709 6896.**

Get in touch  
and make  
a reservation!

[www.saarijarvenlatu.fi](http://www.saarijarvenlatu.fi)

kayaks, canoes and sub boards  
045 630 8529

Equipment rental  
040 161 7568

### LOAN OUT SPORTS EQUIPMENT WITH YOUR LIBRARY CARD

The Saarijärvi city library is offering Mölkky pins, basket balls, beach volley balls, pétanque balls, kick scooters, SUP boards, snow shoes, tour skates, and tennis rackets on a library card. There is a free tennis court in the ice rink arena, address Valotie 5.

You can also loan out frisbee golf equipment and aquascope on a library card, allowing you to look underwater and be amazed at life there, such as plants, clams, and other bottom-feeding animals. If you move calmly, you might even be able to see some fish!

LIBRARY OPEN

see our opening hours:

[www.saarijarvi.fi/kulttuuri-ja-vapaa-aika/kirjasto](http://www.saarijarvi.fi/kulttuuri-ja-vapaa-aika/kirjasto)

044 459 8257

Sivulantie 12

43100 Saarijärvi



## RUUSTINNA

Ruustinna is part of a nationally recognised cultural environment. The Saarijärvi culture trail starts on our yard and continues over the beautiful Palvasalmi strait to the city centre. Our individually decorated rooms are located in the main building and the renovated atmospheric Wäentupa house. You can enjoy new summer experiences in our luxury tent and Tentsile tents. The accommodation includes a hefty breakfast and the pleasure of a lakeside view from morning until night.

Lunch is served every weekday, and our charming granary café is open in the summer. Our beachside sauna is heated on order, our extensive terraces invite you to have a nice time, and taking the cable ferry to Papinniemi cape is part of the experience at Ruustinna. You can go on boat or canoe trips to lakes Saarijärvi and Pieni Lumperoinen.

OPEN  
detailed information  
on our website.

[www.ruustinna.com](http://www.ruustinna.com)  
[info@ruustinna.com](mailto:info@ruustinna.com)  
041 319 2332

Paavontie 1,  
43100 Saarijärvi



## AHVENLAMPI CAMPING

A naturally beautiful camping ground by a pond. A wide selection of different cabins for all kinds of groups and caravan and tent spots. Beach saunas, a café, and a child-friendly beach at your disposal.

**The camping ground is located less than two kilometres from the Veijari activity park!**



[www.ahvenlampicamping.net](http://www.ahvenlampicamping.net)  
0400 505 768

Ahvenlammentie 62  
43250 Kolkanlahti





Four  
season,  
a hundred reasons  
spend cottage  
vacation!

## SAMMALLAHTI COTTAGES

The Sammallahti cabins are located in the Kalmari village of the city of Saarijärvi by the lake Iso-Löytänjärvi. The lake is approximately 4 km long and 1 km wide.

The spacious and well-furnished cabins are close to the Jyväskylä-Kokkola trunk road, in the peace and quiet of the countryside. The terrain is hilly with green forests punctuated by lakes; beautiful all year around.



[www.sammallahdenmokit.fi](http://www.sammallahdenmokit.fi)  
juho.iso@gmail.com  
Juho Iso-Ahola 040 568 7438

Löytänrannantie 230  
43270 Kalmari / Finland



Luotola  
Saunaland  
offers sauna expe-  
riences, pleasure  
and peace.

## LUOTOLA FARM

Nature and local food on the shores of lake Summanen.  
An old country house milieu offers a party space for 40 persons.

Saunamaa offers sauna bathing in a smoke sauna and continuously heated saunas, catering services on a covered terrace. The estate sells firewood and towed saunas are available for rent. Grain products, summer potatoes, and pastries available on order.



[www.luotolantila.fi](http://www.luotolantila.fi)  
pirjoluoatola@gmail.com  
0400 596 0358 / Martti  
050 323 7937 / Pirjo

Laihantie 89,  
41270 Lannevesi







A cabin atmosphere and natural experiences in the peace of the countryside all year round!

## JAKOLAN TILA

**Villa Mertala** a large log house by the Karankajärvi lake, a child-friendly beach with good fishing, a barbecue shelter, and a boat.

**Mertaranta** a comfortable sauna cabin with privacy, sharing a beach with Mertala.

**Rentola**, a renovated farm house and yard in beautiful surroundings, swimming in the Heijostenkoski rapid stream pool 300 m away, fly fishing possible by the rapid.

**Maalaishotelli Mulikan Hillton** with its versatile party facilities for 100 persons, B&B, kitchen, and sauna.

**Dog activity arena Hallin Haukku** for dog camps and training.

**Jakola car museum** with more than 70 rare vehicles on display, restored by the old man of the house, Raimo Oikari. Open by agreement.



[www.jakola.fi](http://www.jakola.fi)

040 565 3716

Karajoentie 294 A  
43480 Pääjärvi



## PUROLA FARM

A rustic inn by the lake Katajajärvi, in the middle of a beautiful countryside scene. We offer inn accommodations, tasty breakfast and dinner, wonderful experiences with Icelandic horses, as well as yoga, guided forest hikes, honey and peat treatments, and team-building, meeting, and party services all year round. Sustainable Travel Finland quality certified.

We also offer horse-back riding, see page 30

[www.purolafarm.fi](http://www.purolafarm.fi)

040 512 1432



## FARM HOUSE HEPOHARJU

Hepoharju provides breakfast accommodations all year round, three barns available for sleeping in the summer.

The farm is home to horses, dogs, and cats. Children can experience safe riding on horses being walked by instructors! Access to the ski trail network in the winter, fishing by the nearby Riekkonkoski rapid in the summer.

[www.hepoharju.fi](http://www.hepoharju.fi)

050 361 9349

Harjutie 44, 43100 Saarijärvi



## SAARIJÄRVI BOOKING

Pleasant and modern accommodations/offices for rent in the centre of Saarijärvi at daily or monthly rent. Rooms for 1 or 2 persons. Shared kitchen, showers, and toilets. Parking spaces on the yard. Possibility to rent a parking spot in a parking garage. All city centre services are close by.

1 person €59-69 / day,

2 persons €79-89 / day.

Payment in advance.

Key pick-up as agreed.

0400 242 838

toimisto@ppwest.fi

Kauppakatu 7 43100 SAARIJÄRVI



## KULTARANTA MANSION

On a peninsula of Summassaari island, accommodations for 18 persons in two buildings, additional beds available. Buildings can be rented separately as well. Accommodations, meetings, dinners, company parties, and first aid trainings. Atmospheric hut buildings, a smoke and hut sauna, and a tub.

[www.kartanokultaranta.fi](http://www.kartanokultaranta.fi)

044 284 3628

Kivikirveentie 10 B, 43130 Tarvaala



## APARTMENT 28

Beautiful and pleasant holiday apartments by the city centre, with all services within one kilometre.

The apartments have all amenities, electric adjustable beds, and a large TV in the bedroom. Easy access from Mäntytie to the Herämäki fitness trail and a beach close to the building.

050 357 3575

marsa.kinnunen@kstpalvelut.fi

Mäntytie 3 A, 43100 Saarijärvi



## KOSKELA FARM

Koskela farm offers peaceful surroundings for travellers by the Pyhä-Häkki national park on a beautiful spot in a Peltojoki river bend between two rapids.

Stylish barn accommodations for 2 persons in the outhouse, additional beds available. A summer barn for two on the yard, space for 2 or 3 camper vans or trailers with electricity, and tent camping.

[www.koskelantila.fi](http://www.koskelantila.fi)

majoituskoskela@gmail.com

040 841 4092

Silakkatie 58 b, 43170 Häkklä





## LOMAKOIVULEHTO

Koivulehto offers well-equipped beach cabins liveable throughout the year. All cabins have their own beaches, boats, and fishing equipment. Two of the cabins are by the Seven lakes canoe route and the Saarijärvi rapids route. Excellent berry and mushroom picking spots in the vicinity. Ski trails run by the cabins in the winter.

[www.lomakoivulehto.fi](http://www.lomakoivulehto.fi)

0400 891 240 / 040 5898 218

Kalmarin Kangastie 557, 43100 Saarijärvi



## LAUTTAMÄKI TRADITIONAL FARM

A popular summer wedding venue with plenty of cultural and historical significance. A log-walled, open room with space for up to 150 diners serves as the main event hall. Everyone can see the bride and groom and the programme. B&B accommodations for 45 persons in the summer.

[www.lauttamaen-perinnetila.webnode.fi](http://www.lauttamaen-perinnetila.webnode.fi)

0400 202 610

Kuoppalantie 1161

43440 Pylkönmäki



See more accommodations by scanning the QR code!  
[www.visitsaarijarvi.fi/accommodation](http://www.visitsaarijarvi.fi/accommodation)



## LAMMINKANGAS

Lamminkangas cabins are situated at the shore or high up on a hill. They also have their own private beach area with saunas. The cabins have been furnished in a cosy way. The farm is also an ECEAT eco-agrotourism travel destination. The different-sized and -priced self-service cabins can accommodate 2-10 people. Barn accommodation is also possible. Welcome to Lamminkangas!

[www.lamminkangas.fi](http://www.lamminkangas.fi)

040 7030 519

Lamminkankaantie 193, 43270 Kalmar



## KULTARANTA LOG CABIN

A peaceful and beautiful villa for 4 to 6 persons by the Pyhä-Häkki national park. Bedrooms and a kitchen-living room with all amenities.

No pets allowed.

040 8204 212

Suojärventie 106 B

43170 Häkkilä





### ONNELA, 6HLÖ, SAARIJÄRVI

Onnela is one of the apartments of an 1800s log-built semi-detached house, which is available to use together with its yard areas. Accommodation for six people. If necessary, 2 mattresses can be provided for additional guests. The kitchen is equipped for essential meal preparation. The apartment has a sauna, and there is a small beach nearby, where you can take a dip in one of the cleanest lakes in the region. Baby and children's equipment are available for families with children.

Varaa osoitteessa: [airbnb.fi](https://airbnb.fi)



### KONTTIMÄEN KOULU

Konttimäki's idyllic village school is suitable for accommodation, camps, and holidays and a venue for various celebrations and events. Affordable camping-level accommodation for up to 50 people in the vicinity of Kulha's nature protection area. Guests have access to a yard sauna and BBQ shelter in the yard area. Maximum number of people for events is 80 people. There are good hunting opportunities in the vicinity too. During the winter, the village's approx. 40-kilometre-long ski track network starts from the schoolyard.

Konttimäen kyläyhdistys ry  
040 778 0540  
[riittapelttonen310@gmail.com](mailto:riittapelttonen310@gmail.com)



## Visit Saarijärvi





## FRISSE

Enjoy a healthy soup, salad, or buffet lunch in the centre of Saarijärvi city. Vegan lunch option always available. Enjoy special coffee blends, smoothies, waffles, and delicacies from our in-house bakery. You can also buy our products to go or as catering for your party. Enjoy a cold drink or ice cream on our large terrace full of sunshine. We have an alcohol licence. We also sell our own peanut granola and a wide selection of organic tea.

### OPEN

mon 9 a.m. to 3 p.m.  
tue-fri 9 a.m. to 5 p.m.  
sat closed  
sun closed

### summer time

9 a.m. to 3 p.m.  
9 a.m. to 6 p.m.  
10 a.m. to 3 p.m.  
closed

[www.frisee.fi](http://www.frisee.fi)

040 7246910

Kauppakatu 1, 43100 Saarijärvi



## SAARIJÄRVEN RUUSTINNA

The rich and varied lunch buffet at Ruustinna includes fresh salads, house bread, main courses, and sweet desserts with coffee. We are always looking to bring a twist to a familiar meal, favouring clean and domestic ingredients. Ruustinna features two large halls and a summer terrace. Our café built in an ancient granary and evening sun terrace facing the beach are open in the evenings too during the summer season.

Our catering service makes delicacies and delivers them to your home or celebration location. You can also book Ruustinna as the location for your own celebration. We offer overnight stays in our idyllic rooms and serve breakfast with a lakeside view. Our beachside sauna is available for rent as agreed.

### OPEN

detailed information on our website.

[www.ruustinna.com](http://www.ruustinna.com)

info@ruustinna.com  
041 3192 332

Paavontie 1,  
43100 Saarijärvi





## HH KEITTIÖ

HH Keittiö is a kitchen in the shop of the diverse, high-quality, national store chain Halpa-Halli. We offer lunch, burger meals, and à la carte.

**A tasty and affordable buffet lunch available Mon-Sun at 10.30 a.m. to 3 p.m.**

**OPEN** mon-sat 10 a.m. to 3 p.m.



[www.halpahalli.fi](http://www.halpahalli.fi) 020 718 3911  
Jyväskylätie 33, 43100 Saarijärvi



## KARHUN KATTILA

Enjoy your morning coffee, lunch, or afternoon tea with us. We serve home cooking that is made by us to the greatest possible extent.

**Buffet lunch served on weekdays at 11 a.m. to 1 p.m.**

**OPEN** mon-fri 8 a.m. to 2 p.m.

[www.karhunkattila.fi](http://www.karhunkattila.fi)

041 3172 663

Sivulantie 11, 43100 Saarijärvi



## KAHVILA-RAVINTOLA LINNAN LIISA

Linna Liisa's varied cuisine includes lunch and à la carte dishes, Xmeal burgers and PizzaVarikko pizzas. You can eat on site or buy along. Our store offers basic food, drinks and ice cream as well as car accessories. Alcohol license, summer terrace and an unmanned Teboil petrol station is nearby.

In addition, direct sales of local producers of bread, pastries and handicrafts.

**RESQ  
CLUB**

**Lunch on weekdays at 10.30 a.m. to 2 p.m.**

**OPEN** summer time

Mon-Thu 8 a.m. to 6 p.m.

Fri 8 a.m. to 7 p.m.

Sat-Sun 10 a.m. to 6 p.m.

**OPEN** winter time

Mon-Thu 8 a.m. to 5 p.m.

Fri 8 a.m. to 6 p.m.

Sat-Sun 11 a.m. to 6 p.m.

[www.linnanliisa.fi](http://www.linnanliisa.fi)

040 521 0978

Linnan yrittäjätie 2, 43100 Saarijärvi

detailed information on our website.







## SAARIJÄRVEN PIZZERIA KEBAB & RAVINTOLA ISABELLA

Kebabs, pizzas, salads, falafels. Eat on the spot or order to go!

Full alcohol licence.

**Buffet lunch served on weekdays at 10.30 a.m. to 2 p.m.**

**OPEN** Mon-Sat 10.30 a.m. to 9 p.m.  
Sun 11 a.m. to 9 p.m.

014 421 554

Paavontie 15, 43100 Saarijärvi



## PAPA'S PIZZERIA

Pizza, kebab, doner, vegetarian Vöner kebab and salads.

You can find us at **Jyväskylantie 35, 43100 Saarijärvi**

**OPEN**  
Check the opening  
hours on our website.



[www.papaspizzeria.fi](http://www.papaspizzeria.fi)

045 184 6006



## PRARICHAT

Delicious Thai food on the menu.

**Buffet lunch served on weekdays at 10.30 a.m. to 2 p.m.**

**OPEN** Mon-Tue 10.30 a.m. to 2 p.m.  
Wed-Fri 10.30 a.m. to 8 p.m.  
Sat-Sun 12 noon to 8 p.m.

046 885 9181 Ilolantie 15, 43100 Saarijärvi





## SEO RANTA-KIVI

Full-service service station with an amazing lakeside view. Enjoy delicious Rolls hamburgers, menu courses, sweet pastries, and the original Valio soft ice on our terrace, naturally complemented with both cold and hot drinks.

Our Fixus spare part and repair shop services will assist you with almost any motor vehicle issue, as well as air conditioning service, tyre sales, and repair/maintenance jobs. We also have a car wash spot, electric vehicle charging spot, trailer rental, and liquefied gas sales.

### OPEN summer time

Mon-Thu 7 a.m. to 7 p.m. Rolls

Fri 7 a.m. to 8 p.m.

Sat 9 a.m. to 8 p.m.

Sun 11 a.m. to 5 p.m.

Mon-Thu 10 a.m. to 7 p.m.

Fri-Sat 10 a.m. to 8 p.m.

Sun 11 a.m. to 5 p.m.

014 333 3777 / Rolls 044 734 0223

Jyväskylän tie 34, 43100 Saarijärvi

### OPEN winter time

Mon-Fri 7 a.m. to 5 p.m.

Sat 10 a.m. to 5 p.m.

Sun closed

Rolls

Mon-Sat 11 a.m. to 5 p.m.

Sun closed



## EVÄSTUPA

A multi-service centre in the middle of Pylkönmäki! Services include a Tarmo grocery store, an Alko pick-up point, a lunch restaurant, grill, and café. We sell local foods, gifts, cut flowers, and summer flowers. A meeting room, party room, and catering service. Also selling fishing licences.

**Buffet lunch 11 a.m. to 2.30 p.m.**

### OPEN

Mon-Sat 11 a.m. to 7 p.m.

[www.evastupa.fi](http://www.evastupa.fi)

040 1840 227

Keskustie 28, 43440 Pylkönmäki





Make  
discoveries  
and  
donate!

## RECYCLING CENTRE

The recycling centre is Saarijärvi's very own circulation centre for all kinds of stuff. We have what you'll need at home, at the summer cabin, and for your wardrobe; our selection includes clothes, shoes, home textiles, dishes, sport equipment, children's things, furniture, and small appliances. The centre also makes shop products by hand with recycled materials.

We accept clean and intact donated items. Donate your unnecessary things and we'll give them a second chance!



**The Luontotupa house is connected to the recycling centre.** Luontotupa is available for meetings and holds exhibits of animals, plants, and rocks from the Finnish Geological Survey!



### OPEN

Mon-Tue 10 a.m. to 5 p.m.  
Wed-Fri 9 a.m. to 4 p.m.  
Sat 9 a.m. to 2 p.m.  
Sun closed

044 4598 307

Oppitie 2, 43100 Saarijärvi







## TAITOKESKUS SAARIJÄRVI

Taito shop is a house full of diverse handicrafts.

The shop includes products from Finnish handicraft entrepreneurs - including Wilawood, Hunanikkarit and Leena Aijasaho - and a diverse selection of materials. Taitokeskus offers weaving opportunities throughout the year; short courses are organised during the working season. An Art primary education handicraft school also operates at Taitokeskus; groups are organised for children and adults. Art and handicraft exhibitions are arranged at Vinttigalleria Gallery during the summer season. Taitokeskus is located in the centre of Saarijärvi on the Palavasalmi shore, in the cultural surroundings of Sofianranta. Sofianranta's culture-historically valuable area belongs to Saarijärvi cultural route's destinations.

<b>OPEN</b>	Tue-Thu	10 a.m. to 5 p.m.
	Fri	10 a.m. to 3 p.m.
summer time	Tue-Fri	10 a.m. to 5 p.m.
(14.6.-12.8.)	Sat	10 a.m. to 2 p.m.
december	Sat	10 a.m. to 2 p.m.

[www.taitokeskisuomi.fi/taitokeskus-saarijarvi](http://www.taitokeskisuomi.fi/taitokeskus-saarijarvi)

050 4131 013  
Paavontie 4, 43100 Saarijärvi



## LAHJAPISTE

We house a flea market, a gift shop, a decoration store, and a handicraft supply store.

We also have a café and a shop for local products!

We also offer beauty salon services and massage services, ask for more!

<b>OPEN</b>	Mon-Fri	10 a.m. to 5 p.m.
	Sat	10 a.m. to 3 p.m.

045 625 0344 myynti@lahjapiste.fi  
Jukolankuja 4 A, 43100 Saarijärvi



## ELÄINPALVELU ÄSA BRA

Waddle into our full-service pet store! We house a wide selection of pet foods and supplies, aquarium fish, horse supplies, and various treatment services including trimming and nail cutting. Our selection includes beautiful domestic handicrafts such as animal-themed jewellery, welcome-signs, and soap. Fresh water available for dogs in the summer at the Äsa Bar on the Ilolantie side. All pets are welcome!

<b>OPEN</b>	Mon-Fri	11 a.m. to 6 p.m.
	Sat	11 a.m. to 2 p.m.

040 743 8784, [info@aesabra.fi](mailto:info@aesabra.fi)  
Kauppakatu 8, 43100 Saarijärvi





### PALSANPURON PAJA

Palsanpuron Paja produces Finnish handicrafts, including jewellery, knives, tools and decorations, decorations and utility items according to customer wishes.

The workshop located at Saarijärvi's Lannevesi is open whenever the smith livari Pääkkönen is there.

[www.etsy.com/shop/  
PalsanpuroSmithy](http://www.etsy.com/shop/PalsanpuroSmithy)

044 981 8052

Palsankyläntie 27, 41270 Lannevesi



### WILAWOOD

Products made of Saarijärvi curly birch and other Finnish woods. Wilawood makes gifts and use items with local curly birch wood and e.g. Finnish rowan and birch plywood. Our product selection includes jewellery, serving trays and cutting boards, as well as vases combining curly birch and mouth-blown glass.

[wilawood.fi](http://wilawood.fi)

[wilawood@wilawood.fi](mailto:wilawood@wilawood.fi)

040 572 9352



### LEENA AIJASALO - VOIMAVALOKUVA

Bears, birds, and landscapes – turning nature photographs into bags, pillows, posters, and post cards. Certified products made in Finland.

Also offering photography services in Saarijärvi.

**Buy online!**

[www.voimavalokuva.fi/kauppa](http://www.voimavalokuva.fi/kauppa)

050 432 5763



### VANHAINAVARAN ERIKOISLIIKE KAIHO

A small and cosy antique shop, where you can find lamps from the 1930s-1970s, books, metal tins and other interesting items. In the backroom, there is an even smaller art shop. You can find Kaiho on Saarijärvi's cultural route at Sofianranta, in a nationally valuable cultural environment, at Paavontie 4 b 43100 Saarijärvi.

**Open on Saturdays at 10 am - 2 pm, in July during weekdays at 10 am - 5 pm or upon agreement**

[www.facebook.com/  
VanhaintavarainkauppaKaiho](http://www.facebook.com/VanhaintavarainkauppaKaiho)

[velituomo.kuusela@gmail.com](mailto:velituomo.kuusela@gmail.com)

040 067 7391

## LÄHIPUOTI ELO - VISIT SAARIJÄRVI

Lähipuoti Elo, which operates in the BioPaavo facilities of JAMK, sells local entrepreneurs' products. There is also a sales point for new Saarijärvi-themed products in the same premises, as well as Visit Saarijärvi tourist information during the summer time.

Lähipuoti Elo's selection includes, e.g., honey, grain products, apple and strawberry juice, jewellery, wooden products, blacksmith works, gift products, and sweet and savoury bakery products.

The Saarijärvi product range includes t-shirt, mug, canvas bag, notebook and sticker. Saarijärvi-illustration by Tiina Kauppinen.

The store is located in the very centre of Saarijärvi, at Paavonaukio. Welcome!



OPEN:  
**summer time 5.6. - 29.7.**  
Mon-Fri 12 noon to 5pm  
**off season:**  
Fri 10 am to 3 pm

You can find us at:  
**Kauppakatu 5, 43100 Saarijärvi**



## EVENING AND NIGHT-TIME ENTERTAINMENT



### KARAOKE BAR KULMA

Opening hours on [Facebook](#)!  
Kauppakatu 7, 43100 Saarijärvi



### RAVINTOLA SEURAHUONE

Opening hours on [Facebook](#)!  
Ilolantie 16, 43100 Saarijärvi



### KUKONHIEKAN HUVIKESKUS

Open from Mayday eve until mid-October, dancing every summer saturday.  
Kukonhiekantie 35, 43100 Saarijärvi,  
lisätiedot: [www.kukonhiekka.com](http://www.kukonhiekka.com)



### WANHA MESTARI

Sing karaoke. We also offer live music, check gigs and opening hours on [Facebook](#) and [Instagram](#).  
Kauppakatu 7, 43100 Saarijärvi

You can also find our opening hours on our website:  
[www.wanhamestari.fi/ravintolat/saari-jarvi](http://www.wanhamestari.fi/ravintolat/saari-jarvi)





## SAHINAHON HUNAJA

Sahinaho Honey Farm has carried out apiculture and honey production since 1984.

We produce multi flower honey and speciality honey. Honey can also be purchased in your own containers during the harvest season. Our honey has also been acknowledged nationally for its quality in Finland's Best Honey competition organised by SML.

In addition to this, we raise queen bees and provide pollination services for local farmers.

0400 958 752  
jormasahinaho@gmail.com



www.sahinahonhunaja.wordpress.com  
Ranta-Hänniläntie 161, 43100 Saarijärvi



## MANNILAN KARTANO

Mannila Manor, restored in the 1900s spirit, is a luxurious conference and event venue available to rent in Saarijärvi. The building and the surrounding yard area provide ideal settings for celebrations. From small to medium events, seats up to 60 people.

040 838 6546 (Ville)  
040 527 7451 (Hannele)



www.mannilankartano.fi  
Mannilantie 9 43100 Saarijärvi



## PUSKIANMÄEN TILA

Puskiänmäki Farm is situated on a tall hill. Large forests surround the farm, so the location is perfect for growing and producing high-quality products.

Our products include strawberries and raspberries, fresh and frozen, fresh apple juice and strawberry juice concentrate, and honey and candles. We also produce juices by squeezing customers' own apples. Products are sold directly from our farm. Please contact us in time and reserve your strawberries and/or an appointment at the fresh juice station.

040 849 5961  
tertuhakala60@gmail.com

www.puskiänmaki.fi  
Pajupurontie 1370, 43100 Saarijärvi



## SUMMASSAARI HONEY GARDENS AND TSASOUNA

You can take a moment in the Summassaari Tsasouna prayer room designed by Sulo Suontala.

Local honey available in our honey shop.

**OPEN** every day!  
Café during the summer season.

0400 340 631  
Haikantie 36, 43130 Tarvaala



## PAMPERING AND WELLNESS

**KAUNEUS- JA HUIUSKLINIKKA JAANA**  
Cosmetological treatments include facials, manicures, pedicures, permanent colours, microneedling, and Bemer treatments. Hair examinations and treatments with a medical microscope, also products for sale. Eco hair dresser services on Thursdays. Open Mon-Fri (flexible hours), Sat-Sun by agreement.  
[www.kauneusjahiusklinikka.fi](http://www.kauneusjahiusklinikka.fi), 0400 533 767  
Paavontie 24 A 19, 43100 Saarijärvi

**KAUNEUS JA HYVÄ OLO ZARA**  
Our services include cosmetological treatments, lymphatic massage, LipoLaser treatments, spray tans, and full-body treatments. Our selection includes natural cosmetics. Mon-Fri as agreed.  
0400 013 804  
Paavonaukio 3, 43100 Saarijärvi

**KAUNEUSKESKUS STUDIO PMK**  
Our services include barber and hair-dresser services, lash extension, gel and artificial nails, lash and brow permanent colouring, make-up, and make-up sales. Barber-hairdressers:  
Kati 040 7204 769  
045 203 3063  
Kauppakatu 6, 43100 Saarijärvi

### TMI MARIKA SVAN - RELAXING ENERGY TREATMENTS, FLORAL DROPS, AND EMPOWERING PAINTINGS

Energy treatments by reiki and bodymind energy methods, reiki instruction, vibration healing in the form of floral drops, empowering vedic art paintings.  
[www.svan.fi](http://www.svan.fi), 0400 644 555  
Kantolantie 63, 43100 Saarijärvi

**KAUNEUSPISTE SINI ILONA**  
Welcome to beauty and good feelings! My services include lash extensions, CND-Creative Play gel cutting, festive and daily make-up, Vitaliberata spray tanning, traditional cosmetologist services such as facials, manicures, pedicures, hot stone massage, brow and lash permanent colouring/curling. Selling the Italian professional make-up range by Evagarden, Denova Pro and Bielenda Professional skin treatment products, Lenden Lashes magnetic lashes, and gift cards.  
Kauppakatu 1, Saarijärvi, 050 5364349

## MARKETS & OTHER SERVICES

### ALKO

Mon-Thu, Sat 9 a.m. to 6 p.m., Fri 9 a.m. to 9 p.m. Torikatu 5, 43100 Saarijärvi

**HALPA-HALLI**  
Mon-Sat 8 a.m. to 9 p.m., Sun 10 a.m. to 9 p.m. Jyväskylätie 33, Saarijärvi

**K-MARKET SAARIJÄRVI**  
Mon-Sat 7 a.m. to 9 p.m., Sun 10 a.m. to 6 p.m. Paavontie 28, 43100 Saarijärvi

**K-SUPERMARKET MINTTU**  
Mon-Sat 7 a.m. to 9 p.m., Sun 9 a.m. to 9 p.m. Torikatu 5, 43100 Saarijärvi

### LIDL

Mon-Fri 8 a.m. to 9 p.m., Sat 8 a.m. to 7 p.m., Sun 10 a.m. to 6 p.m.  
Jyväskylätie 31 A, 43100 Saarijärvi

**S-MARKET SAARIJÄRVI**  
Mon-Sat 7 a.m. to 10 p.m., Sun 9 a.m. to 10 p.m. Kauppakatu 2, Saarijärvi

**TOKMANNI**  
Mon-Sat 8 a.m. to 8 p.m., Sun 11 a.m. to 6 p.m. Kauppakatu 5 / Mon-Fri 8 a.m. to 8 p.m., Sat 8 a.m. to 7 p.m., Sun 11 a.m. to 5 p.m. Jyväskylätie 19



## FLOWERS AND SHOPPING



### KÄRJEN PUUTARHA TMI

We grow summer flowers in greenhouses from seeds and cuttings from March onwards. Our selection also includes various hanging baskets, potted plants, herb and vegetable seedlings. As well as composts and supplies. Come and enjoy a spring excursion at Linna. See and experience the miracle of growth and the splendour of colours.

Welcome to shop at your local garden from the beginning of May. May–June 2.5. from Mon–Fri 9 a.m. to 8 p.m. and Sat–Sun 9 a.m. to 6 p.m.

[www.karjenpuutarha.fi](http://www.karjenpuutarha.fi)  
0400 858 330 / 040 707 5534  
Summakoskentie 170, 43100 Saarijärvi



### SAARIJÄRVEN KUKKAKULMA



A friendly and well-stocked florist in downtown Saarijärvi. We make beautiful bouquets using only the best quality cut flowers. We also offer seasonal flowers, house plants, and various gift items depending on the season.

You can place an order for flowers in our online shop at [saarijarvenkukkakulma.ekukka.fi](http://saarijarvenkukkakulma.ekukka.fi)

Mon–Fri 9 a.m. to 5 p.m., Sat 9 a.m. to 2 p.m., summer Sundays 10 a.m. to 1 p.m.  
[www.saarijarvenkukkakulma.fi](http://www.saarijarvenkukkakulma.fi)  
014 421 570  
Virastotie 2, 43100 Saarijärvi

## FLEA MARKETS



### LAHJAPISTEEN KIRPPUTORI

Mon–Fri 10 a.m. to 5 p.m.  
Sat 10 a.m. to 3 p.m.  
045 625 0344  
Jukolankuja 4 A, 43100 Saarijärvi



### SAARIJÄRVEN KIERRÄTYSKESKUS

Mon–Tue 9 a.m. to 5 p.m.  
Wed–Fri 9 a.m. to 4 p.m.  
Sat klo 9 a.m. to 2 p.m.  
044 459 8307, Oppitie 2, 43100 Saarijärvi

## SHOPPING



### KELLOLIKE PORRI

In our selection jewellery, watches, corporate presents.  
Mon–Fri 10 a.m. to 5 p.m.  
014 421 202  
Kauppakatu 6, 43100 Saarijärvi

### KENKÄ-PUU

Footwear, bags and purses.  
Mon–Thu 10 a.m. to 5 p.m., Fri 10 a.m. to 6 p.m., Sat 9 a.m. to 2 p.m.  
014 471 434  
Jyväskylätie 36, 43100 Saarijärvi

## OPTICIAN

### INSTRUMENTARIUM

Mon–Wed 9 a.m. to 5 p.m.,  
Thu–Sun closed.  
020 332 846  
Kauppakatu 10, 43100 Saarijärvi

### SILMÄASEMA SAARIJÄRVI

Mon–Fri 10 a.m. to 5.30 p.m.  
020 712 2218,  
Kauppakatu 2, 43100 Saarijärvi



# GOOD TO KNOW



## SAARIJÄRVI PHARMACY

Mon-Fri 9 a.m. to 9 p.m. (During summer season Mon-Fri 9 a.m. to 6 p.m.), Sat 9 a.m. to 2 p.m., Sun 11 a.m. to 2 p.m.  
Kauppakatu 2, 43100 Saarijärvi.  
Next to the S-Market.

## SAARIJÄRVI HEALTH STATION

### Saarijärvi health station

First aid weekdays 8 a.m. to 6 p.m., weekends and holidays 8 a.m. to 3 p.m. During other times, closest first aid is available in Jyväskylä.

044 4598 500 Sairaalan tie 2,  
43100 Saarijärvi

### Hospital Nova

When the Saarijärvi health station is closed, please call the number 116 117 for an evaluation and follow the instructions you receive. Keskussairaan tie 19,  
40620 Jyväskylä

**In case of emergency call 112**

## POSTAL SERVICE

In the same building as the K-Supermarket Minttu. Mon-Sat 7 a.m. to 9 p.m., Sun 9 a.m. to 9 p.m.

Torikatu 5, 43100 Saarijärvi

## TAXI TRAFFIC

### KESKI-SUOMEN ALUETAksi

0100 866 44

## BUS STOP

Check bus schedules at

[www.matkahuolto.fi](http://www.matkahuolto.fi)

Torikatu 6, 43100 Saarijärvi

## CLOSEST RAILWAY STATION

### JYVÄSKYLÄ RAILWAY STATION

Hannikaisenkatu 20, 40100 Jyväskylä

Distance to Saarijärvi some 65 kilometres.

## CLOSEST AIRPORT

### TIKKAKOSKI AIRPORT

Lentoasemantie 70, 41160 Tikkakoski

Distance to Saarijärvi some 45 kilometres.



## CAR REPAIR SERVICES

### AD JUHAN AUTOHUOLTO

All repairs and services, Vianor-partnered tyre sales, 24/7 carwash. Cars and vans, trailers, boat trailers, ski boxes, and party tents for rent.

Open weekdays 8 a.m. to 4.30 p.m.  
014 423 090

Jyväskylän tie 31, 43100 Saarijärvi



### SAARIJÄRVEN AUTOPALVELU OY

Flexible spare parts and repair service, available also on weekends as needed.  
014 3333 777

Jyväskylän tie 34, 43100 Saarijärvi

### SAARIJÄRVEN AUTOTARVIKE OY

A wide selection of solutions for your car: service, repairs, spare parts, supplies, chemicals, and paints.

010 2812 880

Open weekdays 7.30 a.m. to 4.30 p.m.

Sara-ahontie 15, 43100 Saarijärvi



### TKR-AUTOKORJAAMO AUTOASI SAARIJÄRVI

Affordable repair shop offering a full range of services and repair shop facilities for all makes and models. Euro-master tyre sales. We offer substitute cars for rent while you wait for repairs.

0400 649 292 / 050 5555 670

Open weekdays 8 a.m. to 4.30 p.m.

Kunniavuorentie 5, 43100 Saarijärvi

## PETROL STATIONS



### CAFÉ & RESTAURANT LINNAN LIISA

Summer season Mon-Thu 8 a.m. to 6 p.m., Fri 8 a.m. to 7 p.m., Sat-Sun 10 a.m. to 6 p.m., winter season Mon-Thu 8 a.m. to 5 p.m., Sat-Sun 11 a.m. to 6 p.m.

040 521 0978

Linnan yrittäjä tie 2, 43100 Saarijärvi



### SEO RANTA-KIVI

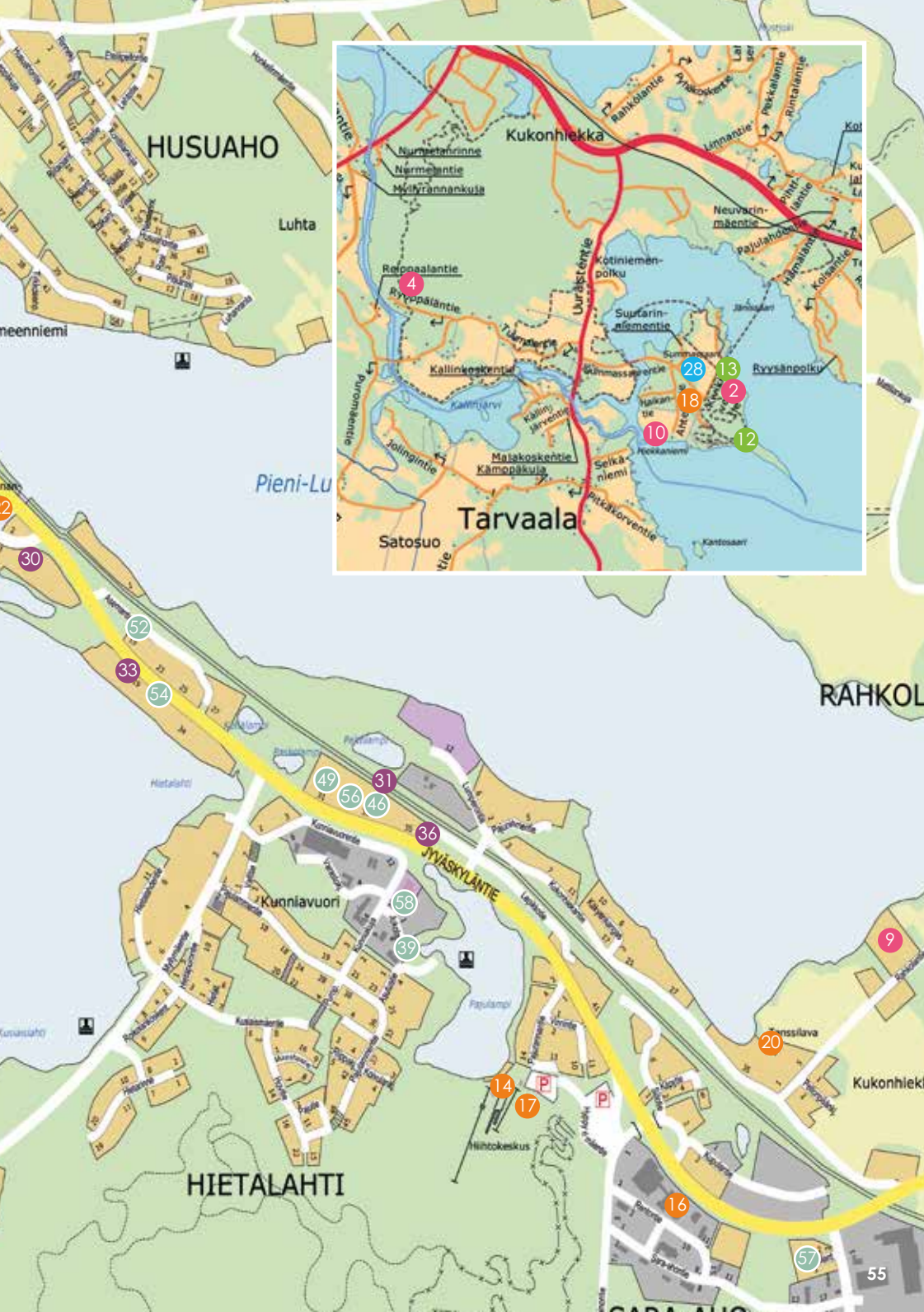
Summer season Mon-Thu 9 a.m. to 7 p.m., Fri 7 a.m. to 8 p.m., Sat 9 a.m. to 8 p.m., Sun 11 a.m. to 5 p.m. Rolls Mon-Thu 10 a.m. to 7 p.m., Fri-Sat 10 a.m. to 8 p.m., Sun 11 a.m. to 5 p.m. Winter season Mon-Fri 7 a.m. to 5 p.m., Sat 10 a.m. to 5 p.m., Sun closed. Rolls Mon-Sat 11 a.m. to 5 p.m., Sun closed.

014 333 3777 / Rolls 044 734 0223

Jyväskylän tie 34, 43100 Saarijärvi







HUSUAHO

Luhta

Pieni-Luhta

Satosuo

Tarvaala

RAHKOLA

Kukonhiekkä

HIETALAHTI

JYVÄSKYLÄNTIE

Kukonhiekkä





## TOURISM SERVICES IN THE TOWN CENTER

The items are marked on the map on the previous spread according to the colour codes.

### YLEISET PALVELUT

- 1 Post office
- 3 Bus stop
- + Health center
- i Tourist information

### CULTURE DESTINATIONS

- 1 Saarijärvi museum, Toivi Järvinen art home
- 2 Stone Age Village
- 3 Gentry home museum & Runeberg exhibition
- 4 Tapper family Juhola House
- 5 Herala artist residence
- 6 Veijari Activity Park
- 7 Kappelilampi Summer Café
- 8 Saarijärvi church
- 9 Atelier Leijonatorni
- 10 Summassaari Tsasouna

### NATURE DESTINATIONS

- 11 Julmat Lammit
- 12 Haikankärki
- 13 Ancient and Nature Paths

### THINGS TO DO

- 14 Paavonrinteet ja Kusiaismäki Ski Center
- 15 Swimming hall - Fitness centre Aarresaari  
Air gun range
- 16 Liikelataamo
- 17 Disc golf Kusiaismäki  
Summassaari training stairs
- 18 Disc golf Summassaari
- 19 Disc golf Ahvenlampi
- 20 Kukonhiekka entertainment centre
- 21 Autiolahti beach  
Autiolahti beach volley
- 22 Ice-hole swimming
- 23 Mansikkaniemi beach

24 Runeberg's Park

25 Equipment rental,  
Saarijärvi library

## ACCOMMODATION

26 Ahvenlampi Camping

27 Apartment 28

28 Kultaranta Mansion

## DINING

29 Frisee

30 Saarijärven Ruustinna

31 HH Keittiö

32 Karhun Kattila

33 SEO Ranta-Kivi

34 Saarijärven Pizzeria Kebab &  
Restaurant Isabella

35 Prarichat

36 Papa's Pizzeria

## SHOPPING AND SERVICES

37 Recycling centre

i 38 Taitokeskus Saarijärvi

39 Lahjapiste

40 Eläinpalvelu Æsa Bra

41 Karaoke Bar Kulma

42 Wanha Mestari

43 Kauneus- ja Hiusklinikka Jaana

44 Kauneus ja HyväOlo Zara

45 Kauneuskeskus Studio PMK

46 Kauneuspiste Sini Ilona

47 Alko

31 Halpa Halli

48 K-Market Saarijärvi

47 K-Supermarket Minttu

49 Lidl

50 S-Market Saarijärvi

51 Tokmanni, keskusta

52 Tokmanni, Jyväskylätie

53 Saarijärven Kukkakulma

45 Kelloliike Porri

54 Kenkä-Puu

55 Instrumentarium

50 Silmäasema

50 Saarijärven Apteekki

56 AD Juhan Autohuolto

33 Ranta-kivi,  
Saarijärven Autopalvelu Oy

57 Saarijärven Autotarvike Oy

58 TKR Autokorjaamo



# Saarijärvi

See pages 60 and 61 for more information.



Campfire place



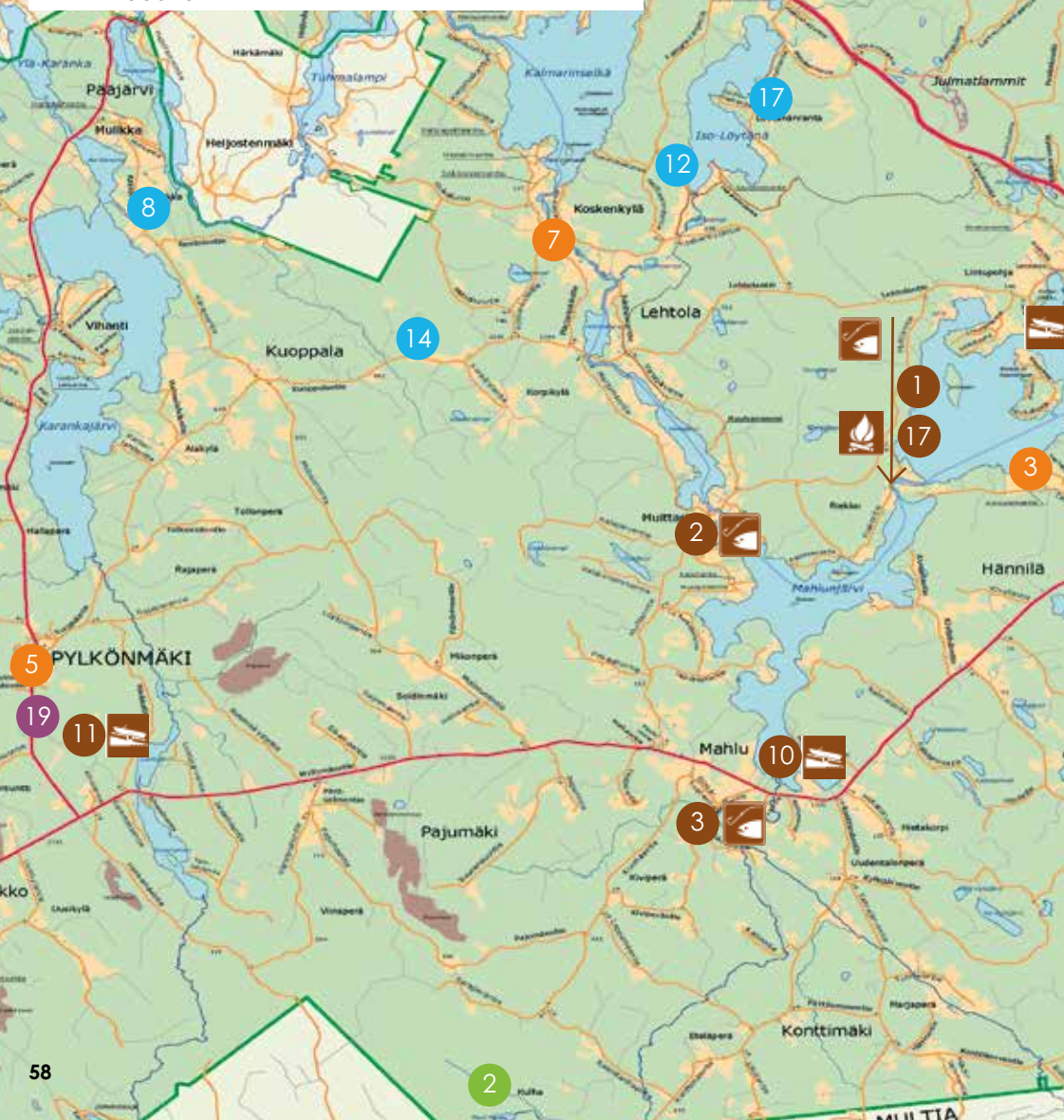
Lean-to / hut



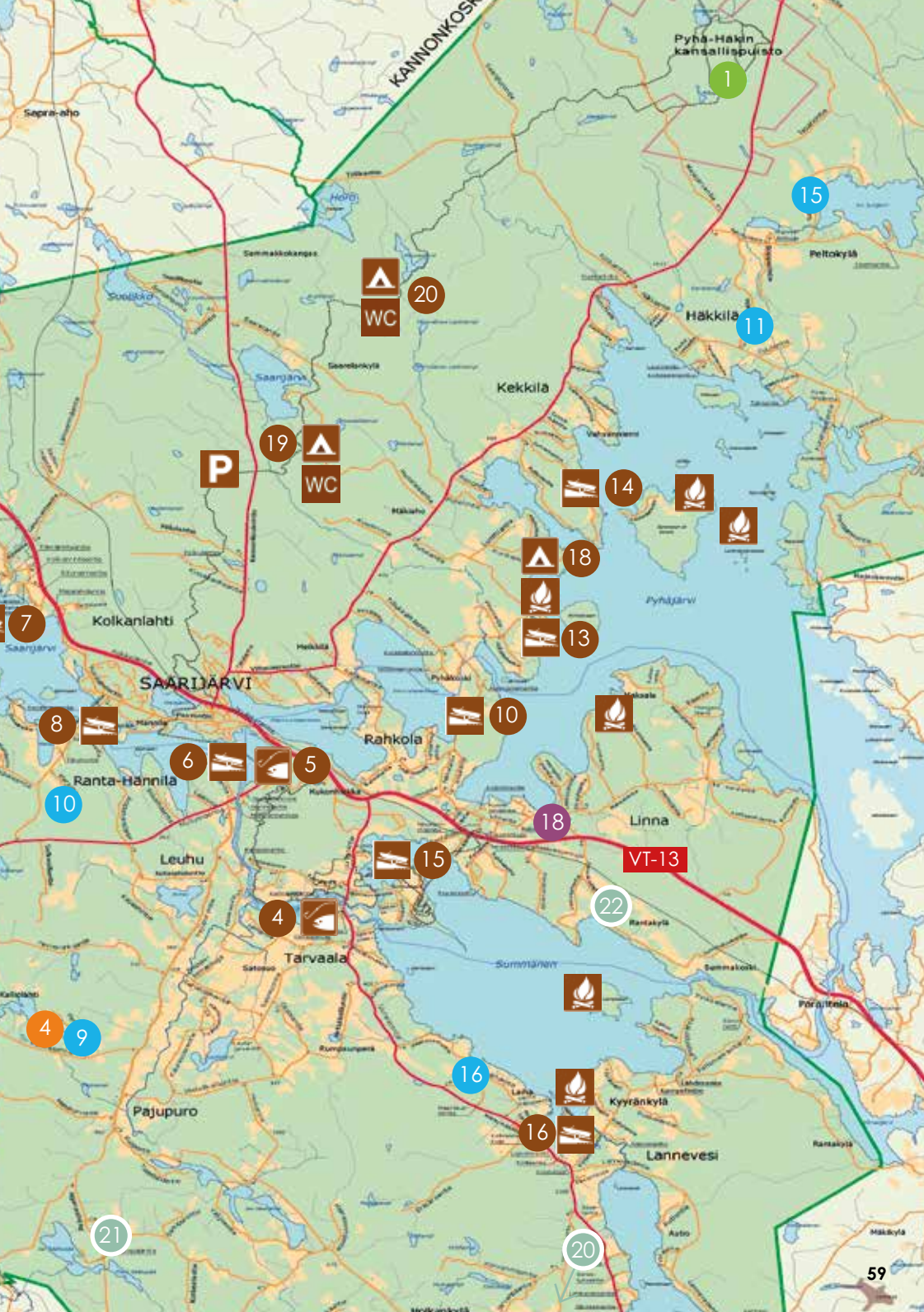
Boat launch location



Fishery









## TOURISM SERVICES OUTSIDE THE TOWN CENTER

The items are marked on the map on the previous spread according to the colour codes.

### NATURE DESTINATIONS

- 1 Pyhä-Häkki National Park
- 2 Kulhanvuori ja Syväojarotko

### THINGS TO DO

- 3 Finnish Yoga Institute
- 4 Horseback Riding, Purola Farm
- 5 Disc golf Pylkönmäki
- 6 Disc golf Kalmari
- 7 Roppilax tourist farm

### ACCOMMODATION

- 8 Jakolan Tila
- 9 Purola Farm
- 10 Farm House Hepoharju
- 11 Koskela Farm
- 12 Lomakoivulehto
- 13 Lamminkangas
- 14 Lauttamäki Traditional Farm
- 15 Kultaranta-log cabin

- 16 Loutola farm
- 17 Sammallahti cottages

### DINING

- 18 Café & Restaurant Linnan Liisa
- 19 Evästupa

### SHOPPING AND SERVICES

- 20 Palsanpuron Paja
- 21 Tmi Marika Svan - Relaxing energy treatments, floral drops and empowering paintings
- 22 Kärjen Puutarha Tmi



See more local services  
by scanning the QR code!  
[saarijarvi.yrityshakemistot.fi](http://saarijarvi.yrityshakemistot.fi)

## FISHING JA BOAT LAUNCH LOCATIONS HUTS AND CAMPFIRE LOCATIONS



### RAPID FISHING LOCATIONS

- 1 Riekonkoski**  
Riekontie 138  
43250 Kolkanlahti
- 2 Muittarinkoski**  
Muittarintie 574  
43250 Kolkanlahti
- 3 Konttijoki-Kotajoki**  
Silmäkoskentie 90  
43220 Mahlu
- 4 Majakoski**  
Kallinjärventie 2  
43130 Tarvaala
- 5 Recreational fishing destination Pajulampi**  
**Parking lot**  
Hyppymäentie 1  
43100 Saarijärvi  
**To ice**  
Asutustie 8  
43100 Saarijärvi  
**To water**  
Hyppymäentie 1  
43100 Saarijärvi



### HUTS AND CAMPFIRE LOCATIONS

- 17 Lean-to and campfire place**  
Riekontie 138  
43250 Kolkanlahti
- 18 Hut**  
Saunajaakontie 43  
43100 Saarijärvi
- 19 Lean-to and campfire place**  
Vuosjoki  
resting place
- 20 Hut**  
Kourajärvi  
resting place



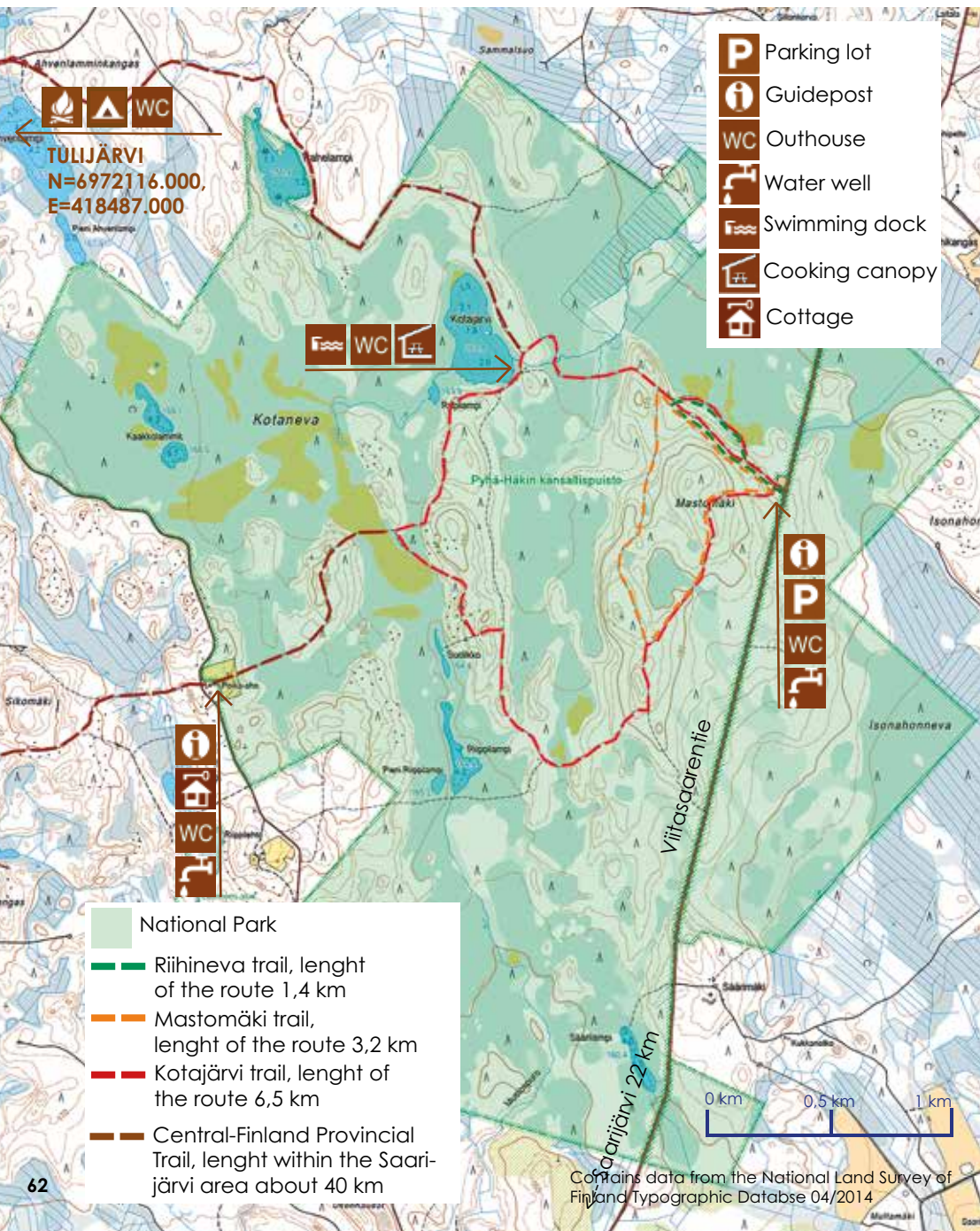
### BOAT LAUNCH LOCATIONS

- 6 Myllymäentie 1**  
43100 Saarijärvi
- 7 Kannonkoskentie 8**  
43100 Saarijärvi
- 8 Ranta-Hänniläntie 9**  
43100 Saarijärvi
- 9 Lehtolantie 56**  
43250 Kolkanlahti
- 10 Mahlunjärvi**  
Myllymäentie 1266  
43220 Mahlu
- 11 Luotonen Sammalinen**  
Myllymäentie 2388  
43440 Pylkönmäki
- 12 Iso-Lumpero**  
Pyhäkoskentie 215  
43100 Saarijärvi
- 13 Pyhäjärvi**  
Saunajaakontie 43  
43100 Saarijärvi
- 14 Pyhäjärvi**  
Iisniementie 241  
43100 Saarijärvi
- 15 Summasjärvi**  
Summassaarentie 43  
43130 Tarvaala
- 16 Summasjärvi, sahanranta**  
Kiimasjärventie 51  
41270 Lannevesi



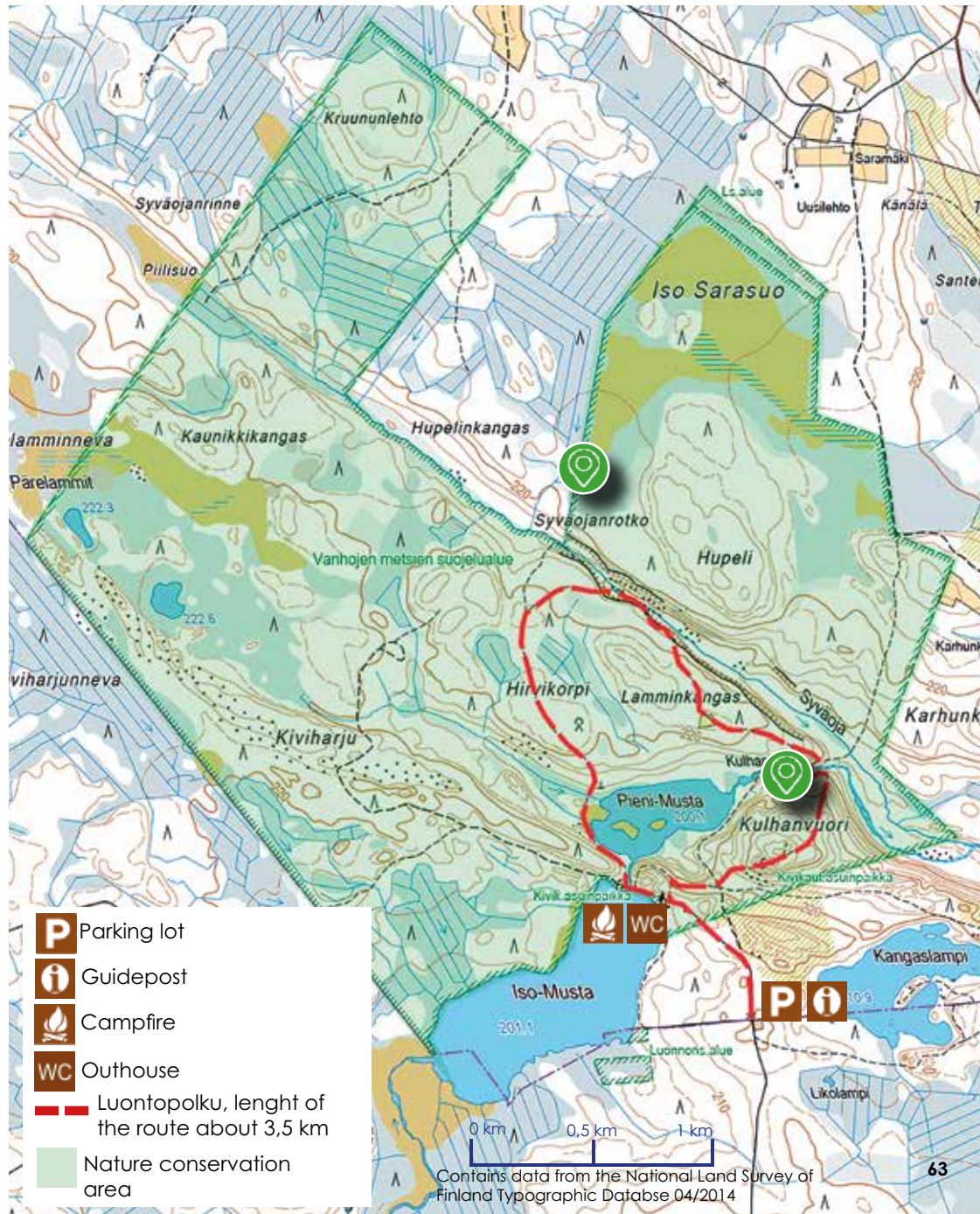


# PYHÄ-HÄKKI NATIONAL PARK



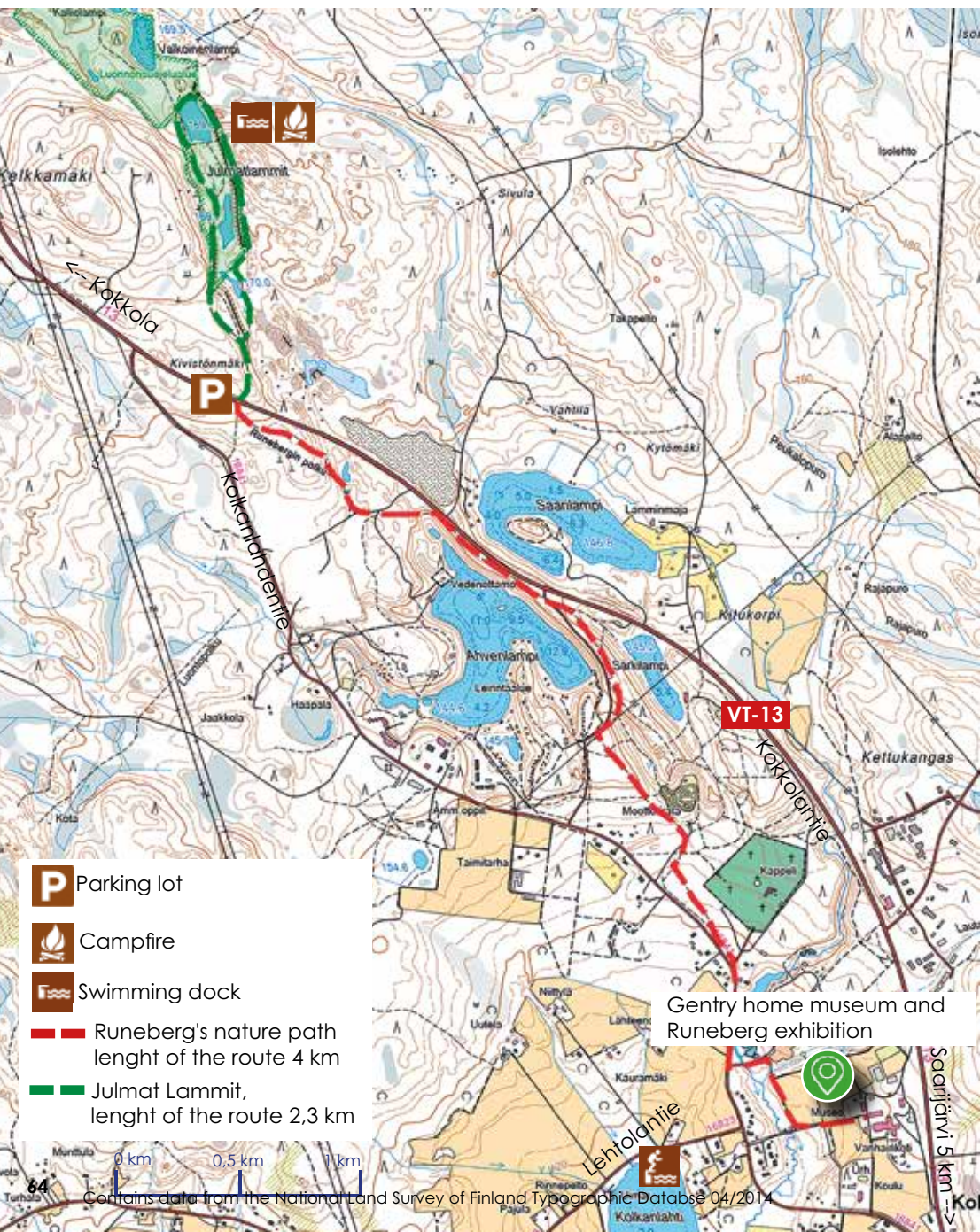


# KULHANVUORI AND SYVÄOJANROTKO





# JULMAT LAMMIT, RUNEBERG'S NATURE PATH





# HAIKANKÄRKI, ANCIENT NATURE PATHS





## INTERESTED IN SAARIJÄRVI?

The City of Saarijärvi has plenty of plots on offer for those looking to build their own house. Our naturally beautiful lake landscapes offer pleasant surroundings for the whole family! There are housing plots in the city centre, in the vibrant villages, and at the housing area zoned by the shore of the Summasjärvi lake.

The City of Saarijärvi has opened a new and pleasant district for small houses on the **Timonmäki esker** right by the city centre. The district is well-connected to both the services in the centre and the specialist shops by the highway. The engineering design for the district, situated by the lake, was started in the summer of 2020.

One of the most appealing housing areas is in **Kotiniemi** by the shore of lake Summasjärvi. The area features building plots with private beaches in a peaceful rural landscape. The sizeable plots, some with private beaches, are located next to good traffic connections five kilometres from the city centre. Our diverse services are close by, as are several recreational trails.



Could Saarijärvi be your future home? Take a look at our new resident's info package at **[kotiinmeille.fi](https://kotiinmeille.fi)**

Learn more about vacant building plots: [www.saarijarvi.fi/vapaat-asuintontit](https://www.saarijarvi.fi/vapaat-asuintontit)  
044 459 8314 / head of land use OR 044 459 8406 / secretary of planning

# ENTREPRENEURS WELCOME TO SAARIJÄRVI!

## We will help you develop your business!



Whether you need advice on new ideas, investments, agribusiness, business trades, ownership changes, customer acquisition, internationalisation, or new partnerships.

We will advise you with all business-related issues all the way from the start! Don't hesitate to get in touch!

### Director of Business Development

Jyrki Rahkonen, 040 581 5964, [jyrki.rahkonen@saarijarvi.fi](mailto:jyrki.rahkonen@saarijarvi.fi)

**Business Advisor** Harri Uusisalo, 044 459 8452, [harri.uusisalo@saarijarvi.fi](mailto:harri.uusisalo@saarijarvi.fi)

**Project coordinator** Mari Puranen, 040 351 1086, [mari.puranen@saarijarvi.fi](mailto:mari.puranen@saarijarvi.fi)

**Farm business advisor** Hanna Kaihlajärvi, 040 563 5431, [hanna.kaihlajarvi@jamk.fi](mailto:hanna.kaihlajarvi@jamk.fi)

[www.saarijarvenyrityspalvelut.fi](http://www.saarijarvenyrityspalvelut.fi)

SSYP Kiinteistöt Oy maintains and contracts commercial and business properties in the city centre and nearby areas.



**KIINTEISTÖT**  
Saarijärvi

Free commercial properties available at  
[www.ssypkiinteistot.fi/vapaat-tilat](http://www.ssypkiinteistot.fi/vapaat-tilat)

**Executive Officer** Olavi Nolte, 044 4598 294, [olavi.nolte@ssypkiinteistot.fi](mailto:olavi.nolte@ssypkiinteistot.fi)

## INDUSTRIAL AND COMMERCIAL PLOTS IN THE CITY OF SAARIJÄRVI

Saarijärvi business plots include good options for both small operators and heavy industries. Plots are available for rent and sale. The plots are mainly situated in two areas by highway 13 in Kolkanlahti and Linnankylä, some seven kilometres from the centre of Saarijärvi. There are individual plots available closer to town.





## TOURIST INFORMATION



You can ask for more details and pick up brochures at the tourist information centres.

### TAITOKESKUS SAARIJÄRVI

050 413 1013 / Paavontie 4

### SAARIJÄRVI TOWN HALL

Sivulantie 11 (closed 5th June - 30th July)

### BIOPAAVO

Kauppakatu 5 (open 5th June - 29th July)

### SAARIJÄRVI TOURISM GUIDE DISTRIBUTION POINTS:

- Saarijärvi Town Hall, Sivulantie 11
- Taitokeskus Saarijärvi, Paavontie 4
- SEO Ranta-Kivi, Jyväskylän tie 34
- Kahvila-Ravintola Linnan Liisa, Jyväskylän tie 705



# Visit Saarijärvi

TOURISM SERVICES AT SAARIJÄRVI  
Sivulantie 11 / PL 13, 43100 Saarijärvi  
[travel@saarijarvi.fi](mailto:travel@saarijarvi.fi)

[www.visitsaarijarvi.fi](http://www.visitsaarijarvi.fi)



@visitsaarijarvi



TAG YOURSELF  
TO SAARIJÄRVI  
#annahetkenviedä  
#visitsaarijärvi  
#saarijärvi